

# WeatherLink<sup>®</sup> for Alarm Output Addendum

## Introduction

This Streaming Data Logger is designed to provide an electrical interface between a Vantage Pro<sup>™</sup> or Vantage Pro2<sup>™</sup> weather station console or Weather Envoy<sup>™</sup> and an electrical device. You may set a series of thresholds for various parameters that will trigger if any of them are met (OR condition), all of them are met (AND condition), one and only one is met (XOR condition). You may also test whether a parameter is within (between condition) or outside of (not between condition) a certain range, or changing at a certain rate (trending), or how far apart (or close) two like parameters are from each other. Finally, you may also test various parameters to see if they are reporting a valid number. This can be used to signal a bad data connection or malfunctioning sensor.

This product also contains the functionality of the WeatherLink for Vantage Pro Serial version. Please consult the WeatherLink for Vantage Pro Getting Started Guide and on-line Help files for information on the use of the WeatherLink program (including its hardware requirements and typical installation), package contents, and optional accessories for this product.

If you plan to install this product in a Vantage Pro or Vantage Pro2 console, use the notch in the battery door located adjacent to where the PC connector protrudes and above the AC power connector to bring out the Connector Block wire.

If you plan to install this product in a Weather Envoy, it is recommended that you knock out the left-most tab with the Weather Envoy's PC connector facing you and loop the Connector Block wire around the datalogger connector to the Weather Envoy and bring it out where this tab was removed.

# Hardware Installation and Requirements

In addition to the requirements for WeatherLink, the Alarm Output capability of this product has the following additional hardware requirements.

- One Free Serial Port or One Free USB port with the Serial to USB adapter (Part # 8434) connected to a Windows PC.
- Computer running any version of Windows with at least 3 MB free of RAM and 512 KB free of hard disk space.
- Small Slotted Screwdriver
- (Optional) Relays: You may need to obtain relays in order to switch equipment at voltages higher than 28 Volts or power levels above 10 Watts. Not available from Davis Instruments.

Note: Due to its normal operation, this product will draw more current from the console and Envoy than in typical use. Davis recommends you use the power adapter provided with your product if you are concerned about battery life. Additionally, you can optimize battery life by setting your outputs to normally open, particularly those you do not plan to use.

# Software Installation and Setup

## Installing the Software

Follow the installation instructions for WeatherLink. This will also install the configuration software. The install file contains this program as well as WeatherLink if you ever need to install the program manually.

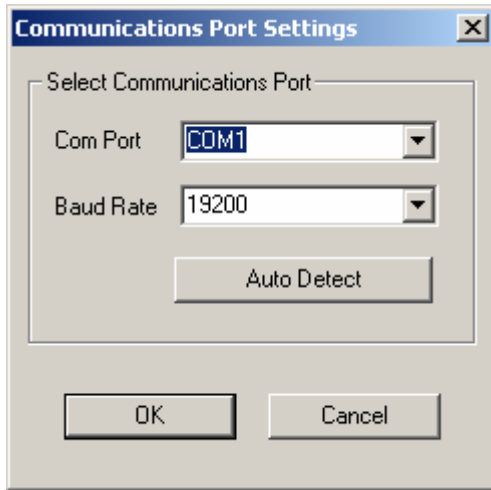
## Running the Configuration Software

To run the configuration software, double-click on the Streaming Data Utility icon in the Streaming Data Utility directory of the WeatherLink directory or select the Streaming Data Utility from the Start Menu under the WeatherLink directory.

## Finding the Correct Serial Port

The configuration software includes a procedure for locating the serial port to which your streaming data logger is connected or determining whether that serial port is working.

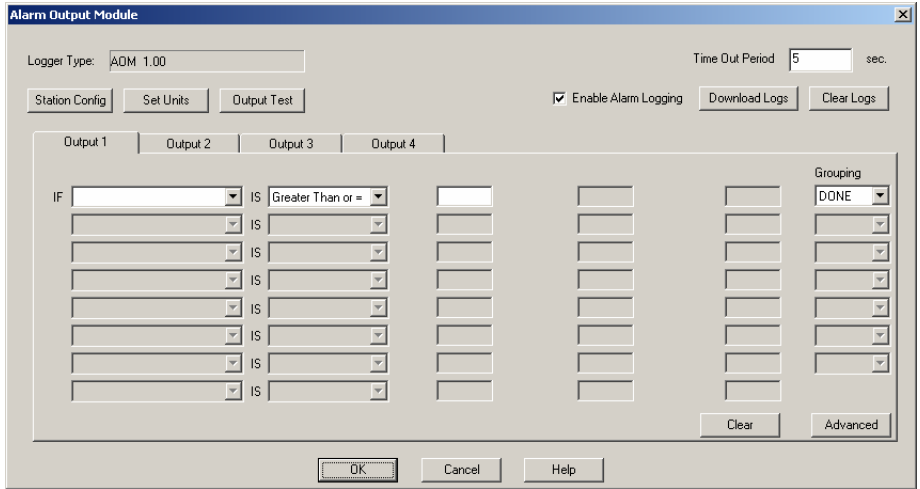
Use the Serial Port Settings dialog box to select the correct COM port and baud rate to communicate to the streaming data logger. The correct baud rate will be the one set in your Vantage console, and in WeatherLink. The default value is 19200 baud. You may manually set the COM port setting or use the Auto Detect button to automatically find where your streaming data logger is connected.



Note: If you have more than one streaming data logger connected to your system, it is highly recommended that you manually set the Com Port and Baud Rate.

# Logger Type

The software indicates the logger type and firmware revision level of the streaming data logger in the logger type box.



## Time Out Period

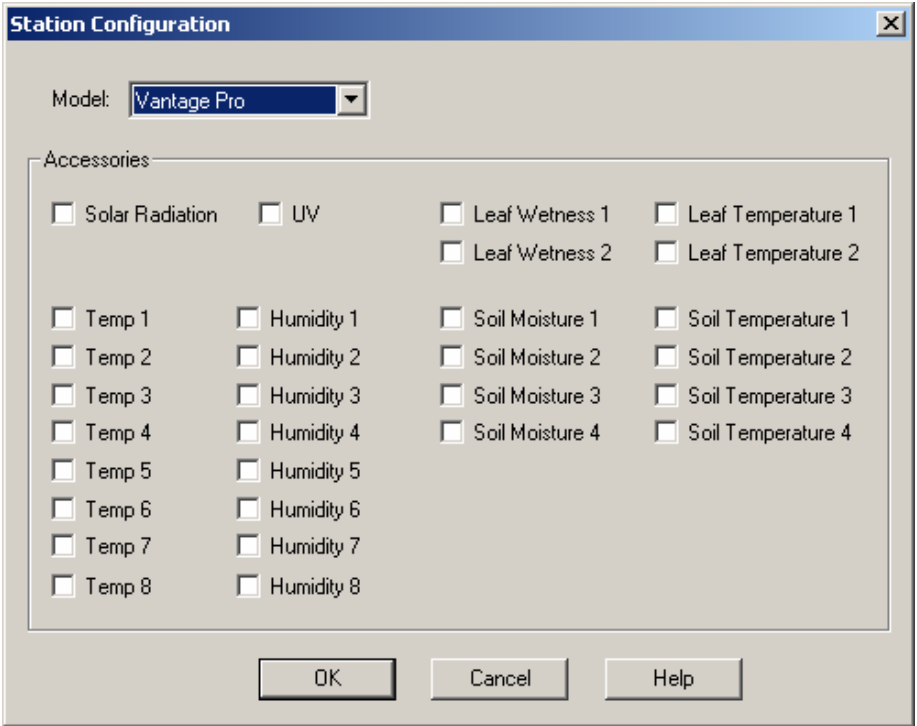
The Alarm Output data logger will always hold an attached device in the appropriate state (On or Off) as dictated by the alarm settings. However, the Alarm Output data logger utilizes a time-out period for ceasing checking the alarm conditions whenever software attempts to communicate to the logger. The default and minimum setting is 5 seconds. Once the time out period ends, the data logger will again check the alarm conditions to determine whether to leave an output open or closed. You may adjust this value if you want the alarm checking functions to resume later after communicating to the logger using WeatherLink or the Streaming Data Utility.

Press OK to configure this setting in the dialog box. Press Cancel to exit the dialog box and preserve the original settings.

Note: Once communications to WeatherLink are initiated and successful, the streaming data logger will be unable to communicate with the Streaming Data Utility until the Time Out Period expires. If you need to communicate to the logger with both the Streaming Data Utility and WeatherLink, you should communicate using the Streaming Data Utility first.

# Station Configure

Before setting alarms, use this function to indicate what sensors you have with your Vantage Pro or Vantage Pro2 system. The Configuration Utility uses your choices to determine what parameters to show in the list. Note that you can only enter this dialog box when no alarms are set. This prevents a user from hiding a parameter that is set as an alarm condition.

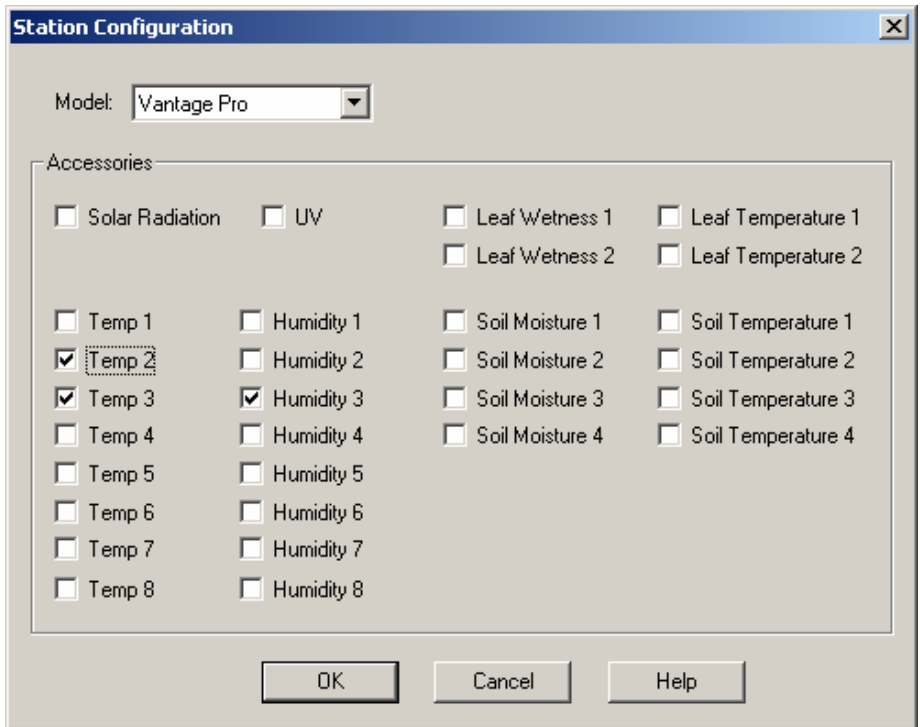


Selecting Vantage Pro Plus automatically checks the Solar Radiation and UV check boxes. You can also check them separately.

The Leaf Wetness, Soil Moisture, Leaf Temperature, and Soil Temperature selections refer to the sensors on the Leaf & Soil Moisture Temperature Station or Soil Moisture/Temperature Station. Temp 1, Temp 2, Humidity 1, Humidity 2 refer to the sensors on the Wireless Temperature or Wireless Temperature/Humidity Stations. Indicate the sensor by selecting the number that corresponds to the transmitter ID on your Wireless Temperature or

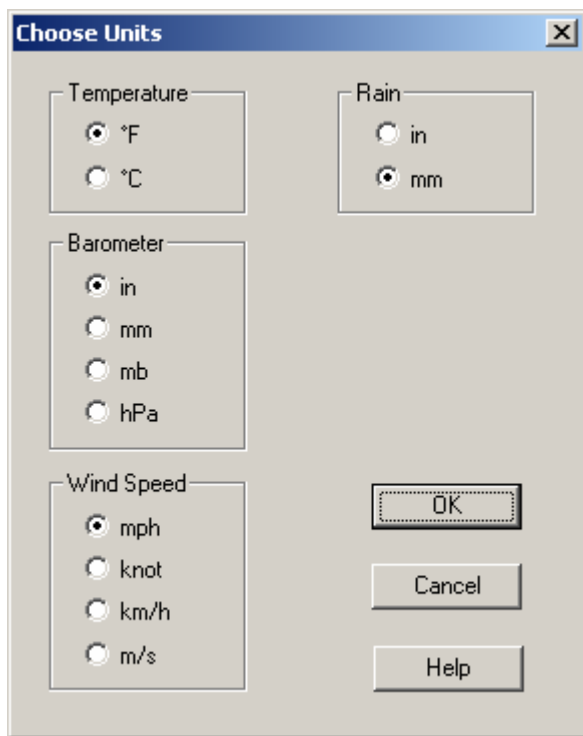
Temperature/Humidity Station. Please note that the Alarm Output data logger makes no distinction between Vantage Pro and Vantage Pro2.

The temperature and humidity readings are numbered according to their station transmitter ID. So, for example, if you have an ISS on Transmitter ID # 1 and a Temperature/Humidity Station on ID # 4, and a Temperature Station on ID # 2, you would check the following dialog boxes in the example shown below. There is no need to indicate your ISS Temperature and Humidity sensors because they always appear under “Outside Temperature” and “Outside Humidity” in the parameter pick list.



## Units

Next, select the units of measure in which data is displayed within this Configuration Utility software. Choosing units of measure in this software does not affect the units of measure displayed on the console, which may be changed independently of this software.



You may select from the following settings:

### Temperature:

Fahrenheit (°F) or Celsius (°C)

Note: Wind chill, dewpoint, degree-days, and temperature indexes are all displayed in the same unit of measure as temperature.

### Barometer:

Inches of Hg (in), Millimeters of Hg (mm), Millibars (mb), or HectoPascals (hPa).



Wind Speed:

Miles per Hour (mph), Knots (knot), kilometers per Hour (km/hr), or Meters per Second (m/s)

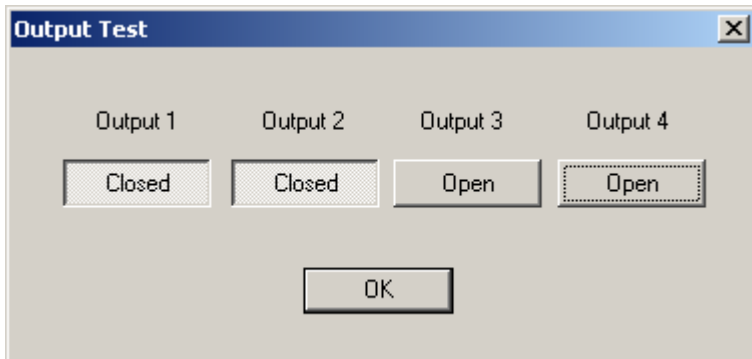
Rain:

Inches (in) or Millimeters (mm)

After selecting units of measure, select OK.

The Configuration Utility saves your choices. All information is displayed in the units of measure you selected.

## Output Test



Pressing the Output Test button puts the Alarm Output data logger into Output Test mode. In this mode, all other functions of the data logger cease. Do not press this button unless you wish to perform a test because it may disrupt the behavior of your connected electrical device.

This function is used to test the output of the Alarm Output data logger. Push the button of the output you want to test. The button will be depressed to indicate Closed circuit mode and raised to indicate Open circuit mode. To utilize this function effectively, you will need to connect a device to the appropriate output so that you can tell when it is turning on or off.

You can connect an ohmmeter to the outputs and see if the output changes state (low for closed or high for open). You may also connect your electrical

device to one or more of the outputs. You can check to see if the unit runs with the Output circuit closed or fails to run with the Output circuit open.

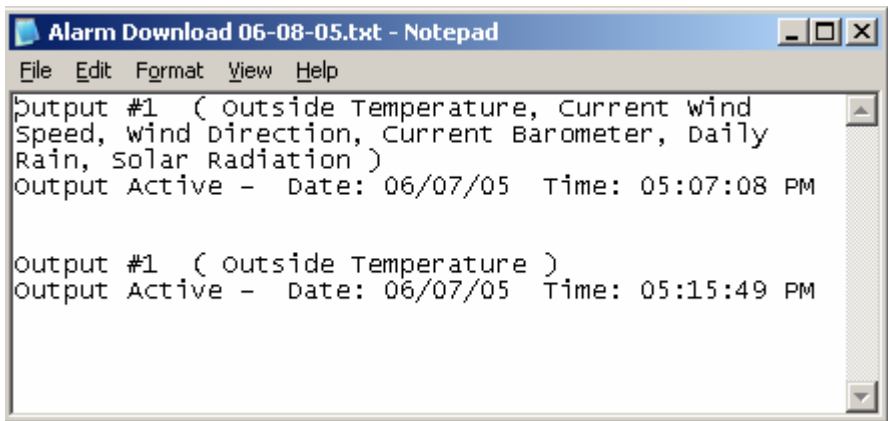
To leave this mode, simply exit the dialog box by pressing the OK button.

## Alarm Logging

Select the checkbox “Enable Alarm Logging” to enable logging of alarm events.

Press Download Logs to retrieve a log of alarm events. The program will write to a file named Alarm Download XX-XX-XX.txt where XX indicates the month, day and year, respectively. This file will be located in the Streaming Data Utility directory under your WeatherLink directory. When download is complete, the text file will automatically open.

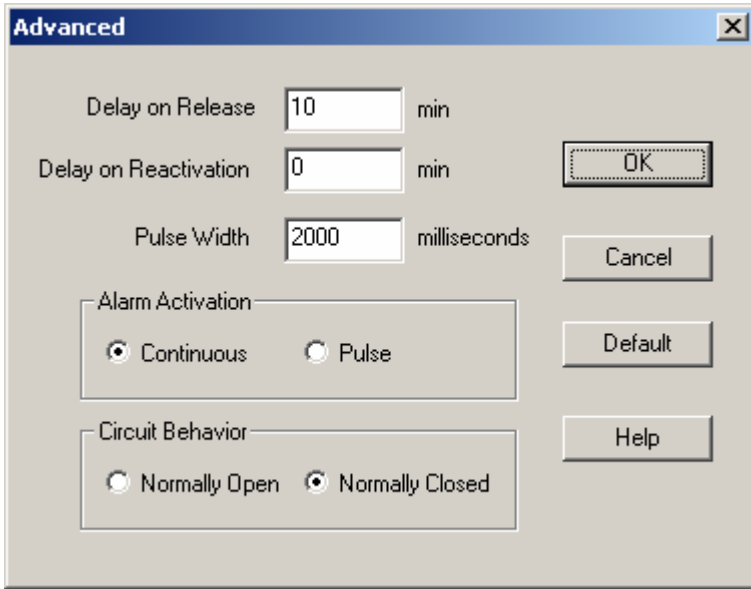
The log will consist of which output became active, which parameters caused the alarm to become active (useful for the AND type alarm) along with the date and time that the alarm became active. This log is cleared whenever any of the output alarms are cleared.



Press Clear Logs to erase any logged alarm events.

## Advanced

Note: This description of this dialog box is valid for Streaming Data Utility versions 1.2.0 included with WeatherLink 5.7.1 or later.



### Delay on Release

Use this function in conjunction with the Alarm output and the Vantage Pro alarms to determine how long to extend the activation time once it is triggered. The default value is 10 minutes.

### Delay on Reactivation

Use this function in conjunction with the Alarm output and the Vantage Pro alarms to determine how long to delay the reactivation of an alarm once it is inactive. The default value is zero.

### Pulse Width

This function determines the pulse width for any of this selected output. When Continuous Activation (see below) setting selected, this value is zero.

In the case of consecutive pulses, it also determines the time between pulses. In most cases, there is no need to alter this value unless directed to do so by the manufacturer of the electrical device you plan to connect to the Alarm Output data logger.

## Alarm Activation

This command determines whether an output for an activated alarm is continuous throughout the activation time or a one time pulse. The default is continuous activation. Pulsed relay oriented devices will require the one-time pulse.

## Circuit Behavior

This command determines whether the circuit stays open or closed when no alarms are active. The opposite behavior occurs for an active alarm condition. Default is normally open. Choose normally open if you want the Alarm Output data logger to leave an electrical device OFF unless an alarm condition occurs. Choose normally closed if you want the Alarm Output data logger to leave an electrical device ON unless an alarm condition occurs. Normally open mode conserves console or Envoy battery power.

## Default

Press this button to restore the data entries to their default values. You must still hit OK to save the settings in the data logger.

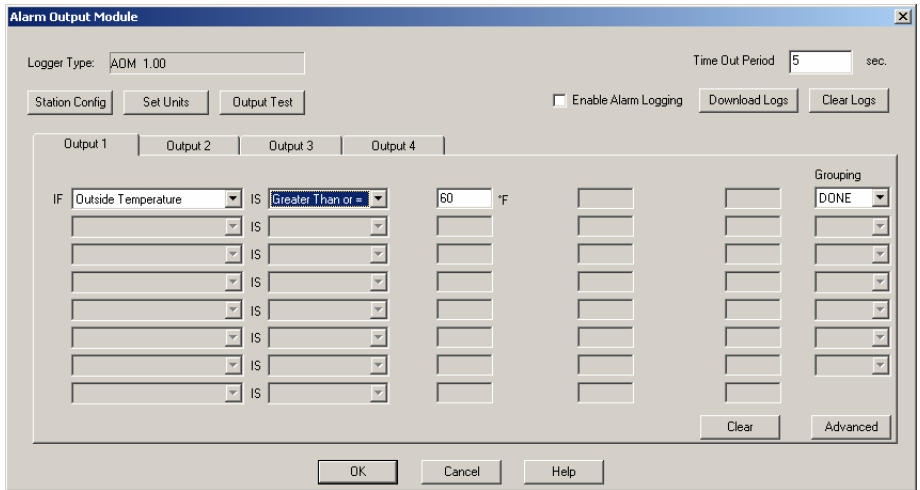
## Output

Select the appropriate tab (Output 1 – 4) to configure the alarm settings for each output.

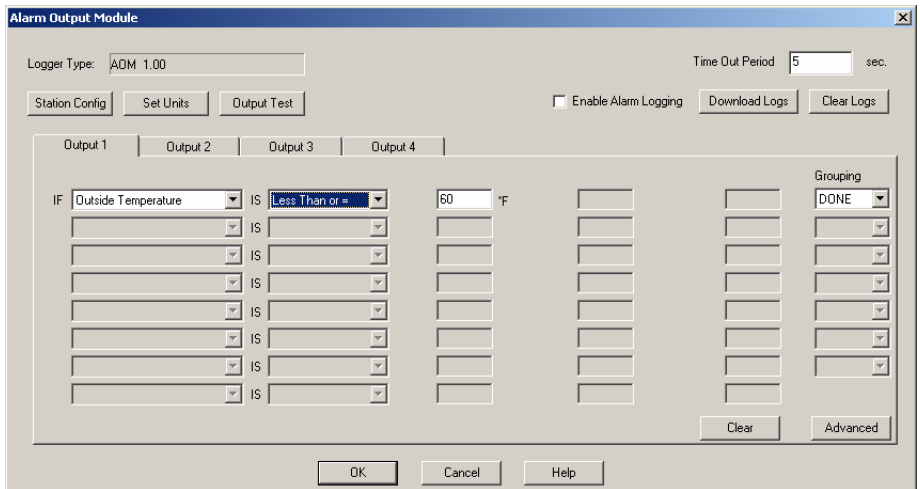
For each output, first select the first parameter you want to test. For the Minus check type, you will need to select a second parameter after you select the Minus check type.

Then, select what type of test condition you want to check it against:

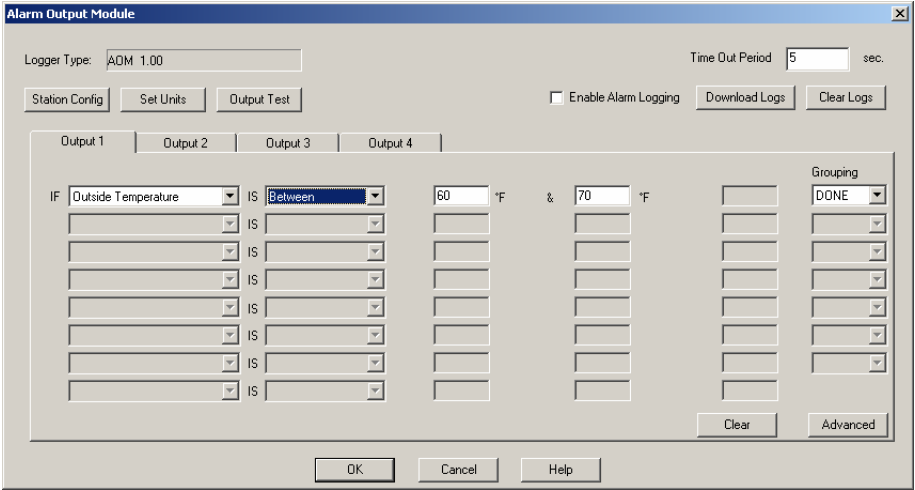
- A **Greater Than or =** or high alarm checks for greater than or equal to.



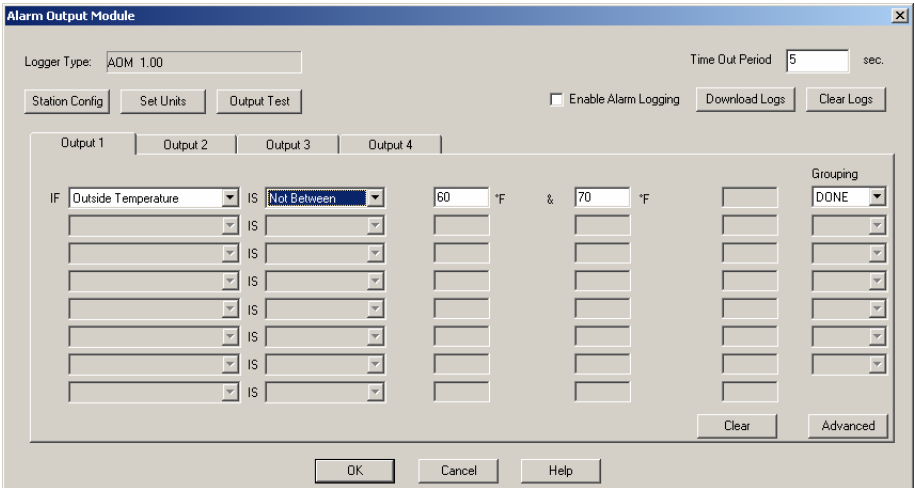
- A **Less Than or =** or low alarm checks for less than or equal to.



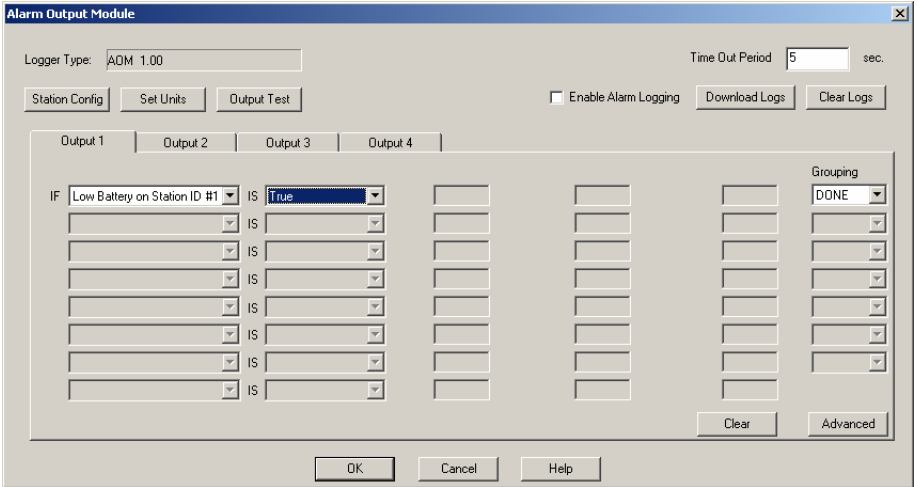
- A **Between** alarm checks to see if the current value is between the two threshold values.



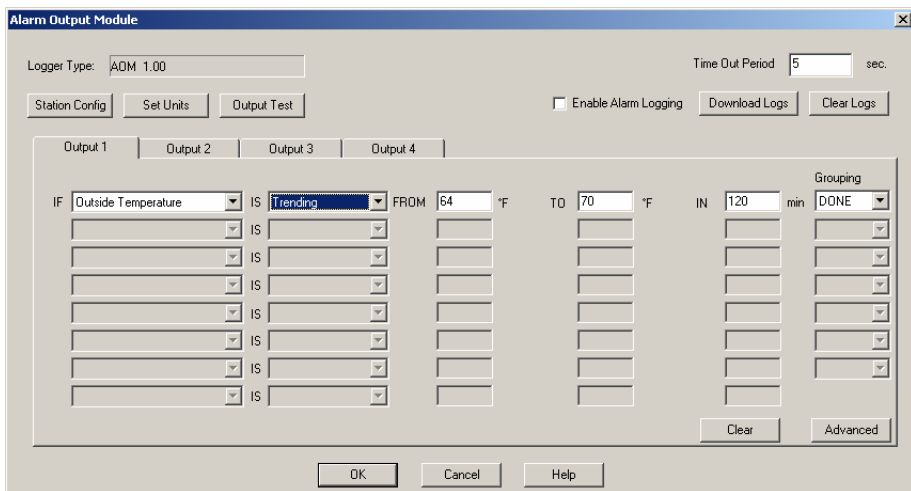
- A **Not Between** alarm checks to see if the current value is not between the two threshold values.



- **True** or False check (Boolean). This is used for the Low Transmitter and Repeater Battery Status parameters, which are not numeric. This check type can also be used with the Bar Trend parameters.



- Trending** allows you to determine whether a particular variable is approaching a value of concern. It is like a “predictive” alarm. If the number you enter in the first edit box is lower than the number you enter in the second box, the data logger will check for an upward trend. Likewise, if the number in the first edit box is higher than the number you enter in the second box, the data logger will check for a downward trend. The third edit box is used to indicate the maximum period of time that may elapse before this alarm is no longer valid.



For this type of alarm to be valid, the parameter of interest must pass through both thresholds within the specified time period. If the parameter is between the thresholds when the alarm is set, or above the higher threshold for an upward trend alarm or below the lower threshold for a downward trend alarm, the alarm will not become active. Please note that frequent communication with the data logger will cause the timing function of this alarm type to run long.

For guidance on how to use this alarm, it may be best to consult historical weather data from WeatherLink plot data (or other sources) to determine what kind of behavior a parameter exhibits before approaching a value of concern. Make note of how quickly the value changes over time before it reaches that value. These changes will govern your threshold values and time period. Your second threshold probably should not match this value, but rather be lower than this value for a



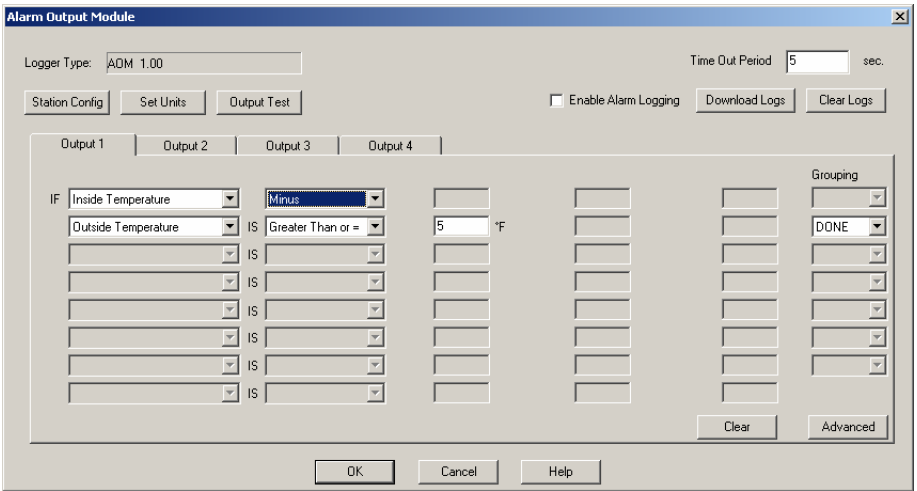
upward trend alarm and higher than this value for a downward trend alarm.

- = (Equal) This can be used to check whether any value is exactly equal to the set threshold value.

The screenshot shows the 'Alarm Output Module' configuration window. At the top, the 'Logger Type' is set to 'ADM 1.00' and the 'Time Out Period' is set to '5' seconds. There are three buttons: 'Station Config', 'Set Units', and 'Output Test'. A checkbox for 'Enable Alarm Logging' is unchecked. To its right are 'Download Logs' and 'Clear Logs' buttons. Below this is a tabbed interface with four tabs: 'Output 1', 'Output 2', 'Output 3', and 'Output 4'. The 'Output 1' tab is active. It contains a table with columns for 'IF', 'IS', a threshold value, units, and 'Grouping'. The first row is populated with 'Outside Temperature', '=', '60', '°F', and 'DONE'. There are seven empty rows below. At the bottom right of the table area are 'Clear' and 'Advanced' buttons. At the very bottom of the window are 'OK', 'Cancel', and 'Help' buttons.

IF	IS	Value	Units	Grouping
Outside Temperature	=	60	°F	DONE

- Minus** or “Difference” alarm allows you to compare the difference between two like variables. For this check type, the two variables must be measured in the same units of measure in order to be compared. If this check type is selected, the software will use the parameter pick list on the row below for the second of the two like variables to indicate. Enter a positive difference you want to compare in the available edit box on the second of the two lines (this software will only allow you to enter a positive difference). Select whether you want to check a “Greater Than or =” or “Less Than or =” difference. Make sure the equation you create results in the check that you want. Some examples are provided below:



- A user wants to activate a fan to bring in cooler outside air to passively cool their house. This affect only works if the temperature outside is 5°F lower than the inside temperatures. Additionally, you don't want to cool your house if the inside temperature is 70°F or lower. This can be expressed as:  
 “IF Inside Temperature Minus Outside Temperature IS Greater Than or = 5.0°F. AND Inside Temperature IS Greater Than or = 70°F DONE.”
- A user wants to activate their sprinkler system when the Daily ET exceeds the Daily Rainfall by 0.05”:  
 “IF Daily ET Minus Daily Rain IS Greater Than or = 0.05 DONE”.
- A user wants to activate environmental controls whenever the temperature outside differs from the inside temperature by 20°F or more. Whether it is hotter or colder outside does not matter, but if

the inside temperature is between 68°F and 72°F, there is no need to alter the inside temperature:

“IF Outside Temperature Minus Inside Temperature IS Greater Than or = 20.0°F OR Inside Temperature Minus Outside Temperature IS Greater Than or = 20.0°F AND Inside Temperature IS Between 68°F & 72°F DONE”.

- **Missing:** This is used to check whether a given parameter is missing or invalid.

Alarm Output Module

Logger Type: ADM 1.00

Time Out Period: 5 sec.

Station Config Set Units Output Test

Enable Alarm Logging Download Logs Clear Logs

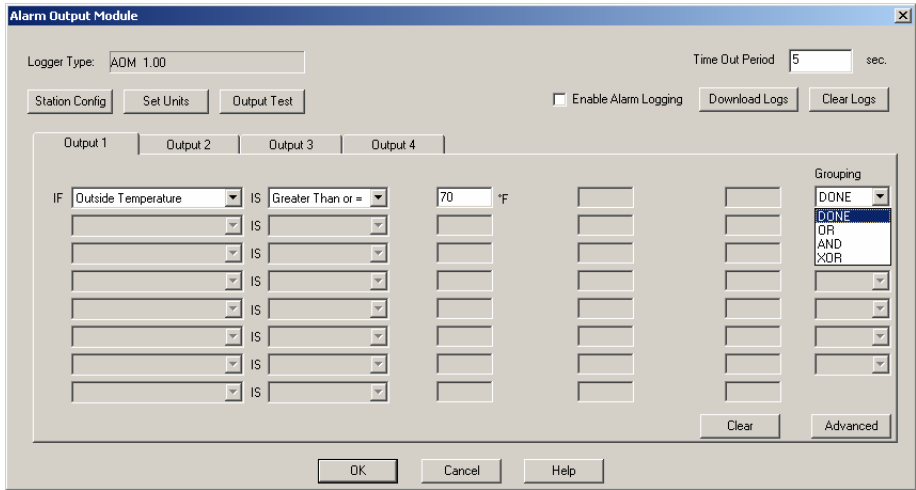
Output 1 Output 2 Output 3 Output 4

IF	IS				Grouping
Outside Temperature	Missing				DONE

Clear Advanced

OK Cancel Help

Finally, choose your Logical Grouping (whether you want to test this condition along with any other conditions).



Choose DONE if this is the only condition you want to check. Choose OR if you want this condition or any of the other conditions you set to trigger an alarm. Choose AND if you require this condition and all of the other conditions you set be present to trigger an alarm. Choose XOR if you want an alarm to trigger if *only one* of the conditions you are checking becomes valid. You may use this selection for the Minus check type except that every use of the Minus check type takes up two lines.

Press OK to save all your Alarm Output settings (except the Advanced settings), Cancel to preserve your previous settings. Please note that the Configuration Utility only makes changes to any settings that are different from the previous settings. Thus, you may notice the program takes longer times than others to set values.

Note on parameters:

- Barometer Trend parameters: Use the True check type for this parameter. Each of the four barometer trends (rising rapidly, rising slowly, steady, falling slowly, and falling rapidly) when used will alarm separately. If you wish to trigger an alarm if the barometer is falling slowly or rapidly you will need to select the first parameter on one line and then the second parameter on the second line and link them together using the OR grouping type.

- Wind Chill and Heat Index formulas the streaming data logger uses are the same as the May 2005 revision of the Vantage Pro2 console firmware. Wind Chill uses the 10-minute average wind for calculation. Your console must be powered for at least 10 minutes to utilize a valid wind chill value.
- Dewpoint formula is also the same as what the Vantage Pro and Vantage Pro2 console uses, but this has not changed from the original firmware version to present.
- Time: Time is entered in 24-hour format. For example, 10 pm is entered as 22:00. Enter am values of 1 am or later as they are, enter pm values of 1 pm or later by adding 12 to the hour. 12 am values should be entered as 00:00. When using the between and not-between check types, the Alarm Output data logger is intelligent enough to handle the midnight rollover. For example, if you set “**IF Time** is between **22:00** and **02:00**”, the alarm will active when the time of day is between 10 pm and 2 am including 11 pm, Midnight, and 1 am and any times in between. Reversing the entries will cause the alarm to be active nearly all day excluding the period around midnight.
- Wind Direction: When using the between and not-between check types, the Alarm Output data logger is intelligent enough to handle the North rollover. For example, if you set “**IF Wind Direction** is between **350°** and **10°**”, the alarm will active when the wind direction is between 350° and 10° including 355°, 0°, and 5° and any directions in between. Reversing the entries will cause the alarm to be active for most wind directions excluding those around north.

Consult Application Note 28 for more detailed information on how derived parameters are calculated. This could be found at the Davis Instruments website:

[http://www.davisnet.com/product\\_documents/weather/app\\_notes/apnote\\_28.pdf](http://www.davisnet.com/product_documents/weather/app_notes/apnote_28.pdf).

## Clear

Press the Clear button to clear the alarms for this output only. This function clears both the dialog box entries and the settings in the datalogger. You must press this button for each of the individual outputs you want to clear.

## Contact Specifications

The “contact” closure is provided by a photo-coupled MOS device. Because it is a solid-state device, it is not subject to arcing and contact-welding as are mechanical relays. However, since it is a solid-state device, it will be damaged by operation beyond its ratings, which are:

Nominal Load Voltage: 28 V AC or 48 V DC, Maximum  
Peak Voltage:  $\pm 60$  V, Maximum  
Load Current:  $\pm 1.8$  A, continuous Maximum at 77°F (25°C),  
derated to 0.7 A at 185°F (85°C)  
ON Resistance: 0.12 Ohm, Maximum

Note: Upon power up (powering the console or Envoy), the datalogger will briefly test all four outputs by closing the circuit (turning on the output). It is recommended that you disconnect any equipment attached to the datalogger outputs before rebooting the console or Envoy.



Product Number: 06544  
Davis Instruments Part Number: 07395.219

WeatherLink for Alarm Output  
Rev. C Addendum (2/5/07)



3465 Diablo Avenue, Hayward, CA 94545-2778  
510-732-9229 ¥ Fax: 510-732-9188  
E-mail: [info@davisnet.com](mailto:info@davisnet.com) ¥ [www.davisnet.com](http://www.davisnet.com)