

KONUS®

Optical & Sport Systems



33rd Year



BINOCULARS



RIFLESCOPES



SPOTTING SCOPES



OUTDOOR



◆ INDEX

Konus is tradition an innovation. The tradition of an historic and prestigious brand that has become a synonym of uncompromising quality and excellence in the optics industry over the last years and is currently distributed in 76 Countries worldwide. The innovation of a creative approach to the market that takes place through the constant development of exclusive products with an unique and original style in both their design and packaging. In the competitive and challenging market of nowadays, Konus is able to offer the ideal solution for every possible need, from Hunting to Birdwatching, from Research to Astronomy, from Science to Sport.

◆ BINOCULARS & SPOTTERS SPECS ◆

Konus binoculars and spotting scopes are made with an uncompromising commitment to quality at its highest standards. Their superior components ensure the ultimate viewing experience for every demanding user. Featuring a wide assortment of models with distinctive specifications (compact, zoom, waterproof, etc.), our lines of binoculars and spotting scopes have become the favourite choice of avid hunters, birdwatchers and outdoorsmen.



◆ BINOCULARS
PAGE 3



◆ MAGNIFIERS
PAGE 60



◆ SPOTTING
SCOPES
PAGE 22



◆ WEATHER
STATIONS
PAGE 67



◆ TRIPODS
PAGE 26



◆ OUTDOOR
INSTRUMENTS
PAGE 75



◆ TELESCOPES
PAGE 28



◆ FLASHLIGHTS
PAGE 79



◆ MICROSCOPES
PAGE 40



◆ SPORT GLASSES
WATCHES
STOPWATCHES
PAGE 82

MAGNIFICATION:

This is the number of times that an object is being enlarged while looking at it through a binocular/spotting scope. For example, an object that is 100 yards away will appear like it is 5 yards away if it is observed with a 20x instrument ($100 : 20 = 5$).



OBJECTIVE LENS DIAMETER:

this diameter affects the light gathering capability of the instrument. The larger the diameter, the better the luminosity and the brightness of the image.

EXIT PUPIL:

this is the size of the circle of light that is visible at the eyepiece of a binocular/spotting scope. The larger the exit pupil, the brighter the image especially in low light conditions such as at dusk or dawn. It is calculated by dividing the diameter of the objective lens by the power of the instrument: for example it will be 5mm in a 8x40 binocular ($40 : 8 = 5$).

FIELD OF VIEW:

this is the side-to-side measurement of the observed area. It is defined by the width in feet or meters of the area that is visible at 1000 yards/meters. The higher the magnification power, the narrower the field of view, unless the binocular/spotting scope features a "wide angle" construction that helps maximize the observed area.



EYE RELIEF:

this is the distance a binocular/spotting scope can be held away from the eye and still maintain the full field of view. Long eye relief optics reduce eyestrain and are much more comfortable, especially for eyeglass wearers.

TYPES OF COATING:

the surfaces of the lenses and prisms are coated to improve the light transmission and reduce glare, thus obtaining a brighter image with higher contrast and less eyestrain. There are 4 types of coating:

- COATED: a single layer on at least one lens surface
- FULLY COATED: a single layer on all air-to-glass lens surfaces
- MULTI-COATED: multiple layers on at least one lens surface
- FULLY MULTI-COATED: multiple layers on all air-to-glass lens surfaces

TYPES OF PRISMS:

optical prisms are made from either barium-crown glass (BAK-4) or borosilicate glass (BK-7). The BAK-4 prisms are of better quality and therefore provide brighter images and higher sharpness.

DIOPTER ADJUSTMENT:

some binoculars come with a ring for fine-focus regulation that is usually provided around one eyepiece. This ring allows to compensate for vision differences between the right and left eye of the observer.

WATERPROOF:

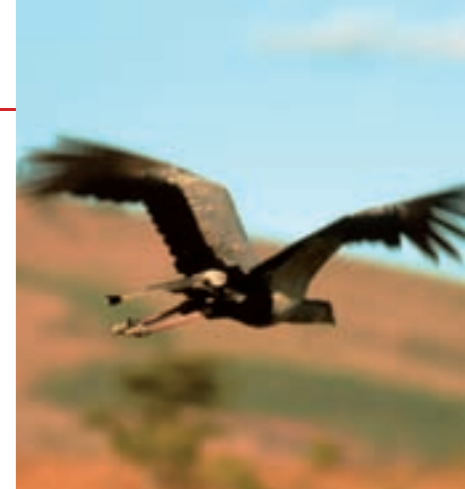
the most professional binoculars and spotting scopes also offer the additional advantage of being waterproof, due to their special construction featuring a sealed and nitrogen purged body. These models can withstand complete immersion in water and can be exposed to the most hazardous weather conditions such as rain, fog and snow.

EMPEROR



Widely considered some of the best binoculars in the industry, our Emperor models have generated unprecedented enthusiasm among the most demanding users. Never before a model with Phase Corrected optics has been so affordable, thus delivering the most outstanding combination of performance and value. The latest additions to this series in 10x50 and 12x50 sizes are simply breathtaking in terms of brightness and sharpness, while also bringing to the table a close focus capability that will provide a perfect vision at less than 8 feet (2.5 meters). The absolute top of the line among Konus binoculars.

EMPEROR



Designed and built to achieve a supreme optical quality, these binoculars will leave you breathless with the impeccable brightness and clarity of their special BAK-4 prisms with Phase Correction. This is an advanced coating technique that will force the light beams back into phase, thus improving the image definition and contrast and creating a sharper view, especially noticeable when observing fine details. The other features of the Emperor binoculars are: waterproof and nitrogen purged body, wide angle eyepieces, extra long eye relief and twist up eyecups, along with an attractive and edgy design that is available in two different colours (green and grey).



#2339
10x50 W.A.
SUPER CLOSE
FOCUS



#2335
8x42 W.A.

#2336
10x42 W.A.



#2340
12x50 W.A.
SUPER CLOSE
FOCUS



#2337
8x42 W.A.

#2338
10x42 W.A.

PHASE CORRECTED

LIGHTWEIGHT BODY

BAK-4 PRISMS

NITROGEN FILLED

SUPER WIDE-ANGLE

LARGE EYEPIECES

FULLY MULTI COATED OPTICS

LONG EYERELIEF

WATERPROOF

RUBBER COVERED

CENTRAL FOCUS

CLOSE FOCUS (2.5M/8FT)

CODE	MODEL	TYPE	MAGNIFICATION X Ø OBJECTIVE	FOCUSING	FIELD OF VIEW AT 1000 MT/YDS	EXIT PUPIL MM	WEIGHT GR/OZ	TRIPOD ADAPTABLE
2339	EMPEROR	Roof Prisms	10x50	Central	94m 308ft	5	900gr 31.7oz	yes
2340	EMPEROR	Roof Prisms	12x50	Central	80m 262ft	4.1	900gr 31.7oz	yes

PHASE CORRECTED

LIGHTWEIGHT BODY

BAK-4 PRISMS

FULLY MULTI COATED OPTICS

NITROGEN FILLED

SUPER WIDE ANGLE

LARGE EYEPIECES

LONG EYERELIEF

WATERPROOF

RUBBER COVERED

CENTRAL FOCUS

CODE	MODEL	TYPE	MAGNIFICATION X Ø OBJECTIVE	FOCUSING	FIELD OF VIEW 1000 MT/YDS	EXIT PUPIL MM	WEIGHT GR/OZ	TRIPOD ADAPTABLE
2335	EMPEROR	Roof prism	8x42 W.A. GREEN	Central	122m 400ft	5.12	743gr 26.2oz	yes
2336	EMPEROR	Roof prism	10x42 W.A. GREEN	Central	98m 314.9ft	4.1	760gr 26.8oz	yes
2337	EMPEROR	Roof prism	8x42 W.A. GREY	Central	122m 400ft	5.12	743gr 26.2oz	yes
2338	EMPEROR	Roof prism	10x42 W.A. GREY	Central	98m 314.9ft	4.1	760gr 26.8oz	yes



◆ TITANIUM EVO

Our acclaimed Titanium series is now richer than ever with these two newest releases in 8x42 and 10x42 sizes. Stylish and aggressive design, rugged and highly performing body, impeccable optical quality in any weather condition including rain and snow. Hunters, birdwatchers and outdoor enthusiasts will fall in love with their crisp and sharp vision, delivered by their multi-coated optics, Bak-4 prisms, large eyepieces, long eye relief and nitrogen filled body.

TORNADO • NAVYMAN ◆

The Tornado is a 7x50 binocular with compass and illuminated reticle that has been developed for the most professional users in the marine, military and hunting field. A gigantic step forward in the industry, this binocular is built according to the highest quality standards: above all it is also floating and therefore it cannot sink whenever it is accidentally dropped in water.

The Navyman binocular delivers a great performance in every marine and boating environment thanks to its waterproof and nitrogen purged construction, coupled with ruby lenses that help cut glare over water or snow.



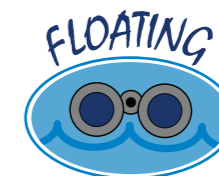
#2318
8x42 W.A.



#2319
10x42 W.A.

- ◆ WATERPROOF
- ◆ LONG EYERELIEF
- ◆ BAK-4 PRISM
- ◆ MULTI-COATED OPTICS
- ◆ FOGPROOF
- ◆ NITROGEN FILLED
- ◆ RUBBER COVERED
- ◆ CENTRAL FOCUS
- ◆ LARGE EYEPIECES

CODE	MODEL	TYPE	MAGNIFICATION X Ø OBJECTIVE	FOCUSING	FIELD OF VIEW 1000 MT/YDS	EXIT PUPIL MM	WEIGHT GR/OZ	TRIPOD ADAPTABLE
2318	TITANIUM EVO	Waterproof	8x42 D.C.F.	Central	114m 342ft	5.3	700gr 25oz	yes
2319	TITANIUM EVO	Waterproof	10x42 D.C.F.	Central	105m 315ft	4.2	700gr 25oz	yes



#2325
7x50 I.F.
RETICLE
COMPASS
ILLUMINATOR
FLOATING



#2310
7x50 C.F.

- ◆ WATERPROOF/FOGPROOF
- ◆ COMPASS WITH ILLUMINATION AND RETICLE (#2325)
- ◆ FLOATING (#2325)
- ◆ NITROGEN FILLED
- ◆ BAK-4 PRISMS
- ◆ INDIVIDUAL FOCUS (#2325)
- ◆ SPECIAL COATED OPTICS
- ◆ RUBBER COVERED

CODE	MODEL	TYPE	MAGNIFICATION X Ø OBJECTIVE	FOCUSING	FIELD OF VIEW 1000 MT/YDS	EXIT PUPIL MM	WEIGHT GR/OZ	TRIPOD ADAPTABLE
2325	TORNADO	Waterproof, floating with compass	7x50	Individual	132 m 433ft.	6.8	890gr 31oz	yes
2310	NAVYMAN	Waterproof	7x50	Central	123m 410ft	6.8	1100gr. 39oz	yes



◆ KONUSARMY

This brand new product stands out as a true military binocular in both its classical design and its remarkable specifications, which make it an ideal choice for every sportsman and professional that is looking for rugged and highly performing equipment that will never let him down. Its BAK-4 prisms and multi-coated optics provide the most brilliant vision and the most outstanding light transmission, while its roll-down eyecups and generous eye-relief make for a comfortable viewing experience. Its whole body is encased in a robust rubber armouring for additional protection versus the extreme abuse that often occurs while on the field.



#2170
8x42 W.A.



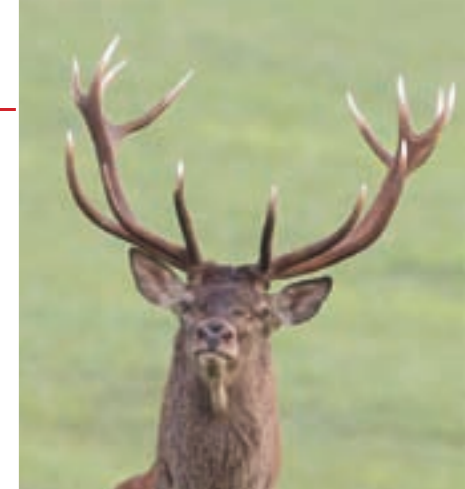
#2171
7x50 C.F.

#2172
10x50 W.A.

- ◆ BAK-4 PRISMS
- ◆ CENTRAL FOCUSING
- ◆ EXTRA LARGE EYEPieces
- ◆ WIDE ANGLE (8x42 AND 10x50)
- ◆ RUBBER COVER
- ◆ FAST ROLL DOWN EYECUPS

CODE	MODEL	TYPE	MAGNIFICATION X Ø OBJECTIVE	FOCUSING	FIELD OF VIEW 1000 MT/YDS	EXIT PUPIL MM	WEIGHT GR/OZ	TRIPOD ADAPTABLE
2170	KONUSARMY	Porro Prisms	8x42 W.A.	Central	140 m 459ft.	4.5	845gr 29.8oz	yes
2171	KONUSARMY	Porro Prisms	7x50 C.F.	Central	110 m 361ft	6.7	970gr 34.2oz	yes
2172	KONUSARMY	Porro Prisms	10x50 W.A.	Central	112 m 367ft.	4.7	970gr 34.2oz	yes

◆ KONUSVUE



Although very competitively priced, the Konusvue binoculars have a good optical quality, a strong full-metal construction and a sturdy rubber armouring for superior gripping capability even while wearing gloves. They are available in 8x40, 7x50 and 10x50 size. The 8x40 model is easy to carry thanks to its compact size. The 7x50 delivers the highest luminosity. The 10x50 packs the biggest magnification power and is therefore especially suited for close-up observations.



#2101
8x40 W.A.



#2102
7x50 C.F.

#2103
10x50 W.A.

- ◆ COATED OPTICS
- ◆ WIDE ANGLE (8x40 10x50)
- ◆ RUBBER COVERED
- ◆ CENTRAL FOCUS
- ◆ INSTRUCTIONS IN 8 LANGUAGES
- ◆ SUPPLIED WITH CASE
- ◆ COMPETITIVELY PRICED
- ◆ LIGHTWEIGHT BODY

CODE	MODEL	TYPE	MAGNIFICATION X Ø OBJECTIVE	FOCUSING	FIELD OF VIEW 1000 MT/YDS	EXIT PUPIL MM	WEIGHT GR/OZ	TRIPOD ADAPTABLE
2101	KONUSVUE	Porro Prisms	8x40 W.A.	Central	143m 476ft	5	530gr 9oz	yes
2102	KONUSVUE	Porro Prisms	7x50 C.F.	Central	119m 396ft	7.1	750gr 26oz	yes
2103	KONUSVUE	Porro Prisms	10x50 W.A.	Central	122m 406ft	4	800gr 28oz	yes



SPORTY

The Sporty 7x50 and 10x50 binoculars stand out because of their competitive price and because of their special fixed focus construction that enables them to automatically focus on every target from a set distance on without any manual adjustment. They are therefore the most suitable binoculars for following fast paced sporting events in which the action constantly shifts from one side of the field to another, like soccer, auto racing, football, boating and so on. Supplied with case, strap and instructions in 8 languages.

NEWZOOM

The Konus Newzoom line is available in 3 diameters with different power in order to match every user's needs. These binoculars also feature a strong and rugged body with rubber armour and crisp optical quality. The versatility of a zoom binocular is unparalleled since you have the option to change the number of magnifications and switch from a large panoramic view to a close-up view of the smallest details.



#2255
7x50



#2256
10x50 W.A.



#2120
7-21x40 C.F.



#2122
8-24x50 C.F.



#2124
10-30x60 C.F.



8x



24x



FIXED FOCUS

"RUBY COATING"
OPTICS

WIDE ANGLE (10x50)

RUBBER COVERED

STRAP AND CASE INCLUDED

INSTRUCTIONS IN 8 LANGUAGES

IDEAL TO LOOK AT FAST

MOVING OBJECTS

CODE	MODEL	TYPE	MAGNIFICATION X Ø OBJECTIVE	FOCUSING	FIELD OF VIEW 1000 MT/YDS	EXIT PUPIL MM	WEIGHT GR/OZ	TRIPOD ADAPTABLE
2255	SPORTY	Porro prisms	7x50	Fixed focus	122m 366ft	7.1	800gr 28.2oz	yes
2256	SPORTY	Porro prisms	10x50 W.A.	Fixed focus	96m 288ft	5	770gr 27oz	yes

CODE	MODEL	TYPE	MAGNIFICATION X Ø OBJECTIVE	FOCUSING	FIELD OF VIEW 1000 MT/YDS	EXIT PUPIL MM	WEIGHT GR/OZ	TRIPOD ADAPTABLE
2120	Newzoom	Zoom	7-21x40 zoom	Central	92/266ft at 7x 43/129ft at 21x	5.7 at 7x 1.9 at 21x	800gr 28.3oz	yes
2122	Newzoom	Zoom	8-24x50 zoom	Central	78/234ft at 8x 40/131ft at 24x	6.2 at 8x 2.1 at 24x	900gr 31.7oz	yes
2124	Newzoom	Zoom	10-30x60 zoom	Central	78/234ft at 10x 35/105ft at 30x	6 at 10x 2 at 30x	1380gr 49.2oz	yes

RUBBER COVERED

CENTRAL FOCUS

COATED OPTICS

ZOOM POWER

GIANT

Two giant binoculars with a 20x magnification power and impressive 60mm and 80mm objectives. Built to maximize the field of view and provide an outstanding panoramic vision, they are ideal for astronomy and birdwatching.

Due to their dimensions, they are quite heavy and it is therefore recommended to use them with a tripod such as our optional #1954 or #1950. The #2110 already includes a tripod adapter, while most of our other binoculars can use the optional adapter #2021.

TITANIUM

The Titanium binoculars combine the advantages of a roof prism design with the most advanced anti-water, anti-fog and anti-humidity treatments. Available in Classic or Camo version, these models are the ideal companions for every nature enthusiast, hunter, hiker and birdwatcher. On top of their fine optical quality and professional Bak-4 prisms they also feature a very competitive price and a stylish and captivating design. Hence we decided to make these binoculars even more suitable to the needs of those people by adding a brand new and extremely realistic "camouflage" look that is also aesthetically pleasing.



#2110
20x80



#1954
SEE
PAGE 26



#1950
SEE PAGE 26



#2125
20x60

#2021
TRIPOD ADAPTER
FOR BINOCULARS



COATED OPTICS

OVERSIZED DIAMETER

RUBBER COVERED

CENTRAL FOCUS

TRIPOD ADAPTER WITH
STABILIZING ROD (#2110)

CODE	MODEL	TYPE	MAGNIFICATION X Ø OBJECTIVE	FOCUSING	FIELD OF VIEW 1000 MT/YDS	EXIT PUPIL MM	WEIGHT GR/OZ	TRIPOD ADAPTABLE
2110	GIANT-80	Porro Prisms	20x80	Central	48m 157ft.	3.83	2500gr 88.1oz	yes
2125	GIANT-60	Porro Prisms	20x60	Central	38m 124ft.	3	1300gr 45.8oz	yes
1950	3-POD	Three section tripod in light alloy, from 65cm (2.1ft) to 160cm (5.2ft) with handle and two level bubbles, screw attachment for spotting scopes and cameras. Supplied with case.					1700gr 59.9oz	
1954	3-POD-4	Three section tripod in light alloy, from 68cm (2.2ft) to 168cm (5.5ft) with handle and two level bubbles, screw attachment for spotting scopes and cameras. Supplied with case.					2300gr 81.1oz	



#2312
10x42 C.F.



#2313
8x42 C.F.



- ◆ WATERPROOF
- ◆ LONG EYERELIEF
- ◆ BAK-4 PRISM
- ◆ MULTI COATED OPTICS
- ◆ FOGPROOF
- ◆ NITROGEN FILLED
- ◆ RUBBER COVERED
- ◆ CENTRAL FOCUS
- ◆ LARGE EYEPIECES

CODE	MODEL	TYPE	MAGNIFICATION X Ø OBJECTIVE	FOCUSING	FIELD OF VIEW 1000 MT/YDS	EXIT PUPIL MM	WEIGHT GR/OZ	TRIPOD ADAPTABLE
2312	TITANIUM CAMO	Waterproof	10x42 D.C.F.	Central	105mt 315ft	4.2	700gr 25oz	yes
2313	TITANIUM	Waterproof	8x42 D.C.F.	Central	114m 342ft	5.3	700gr 25oz	yes



◆ SUPREME

Combining the finest quality and the most unique appearance, our brand new Supreme 8x25 and 10x25 binoculars are waterproof and nitrogen purged, while featuring Bak-4 prisms, multi-coated optics, extra wide eyepieces and long eye relief. Their exclusive open hinge design is at the same time extremely attractive and ergonomic, while sensibly reducing the overall weight of the instrument. The Supreme is therefore ideal for long observations, especially for hunting and birdwatching purposes.



14



CENTRAL FOCUS ◆

MULTI-COATED OPTICS ◆

CASE AND STRAP INCLUDED ◆

INSTRUCTIONS IN 8 LANGUAGES ◆

ERGONOMIC DESIGN ◆

WATERPROOF ◆

BAK-4 PRISMS ◆

OPEN HINGE ◆

CODE	MODEL	TYPE	MAGNIFICATION X Ø OBJECTIVE	FOCUSING	FIELD OF VIEW 1000 MT/YDS	EXIT PUPIL MM	WEIGHT GR/OZ	TRIPOD ADAPTABLE
2360	SUPREME	Pocket	8x25	Central	122m 366ft	3mm	300gr 10.5oz	no
2361	SUPREME	Pocket	10x25	Central	96m 288ft	3mm	310gr 10.9oz	no
2362	SUPREME	Pocket	8x32	Central	122m 400.2ft	4mm	442gr 15.5oz	no



#2360
8x25 W.A.

#2361
10x25 W.A.

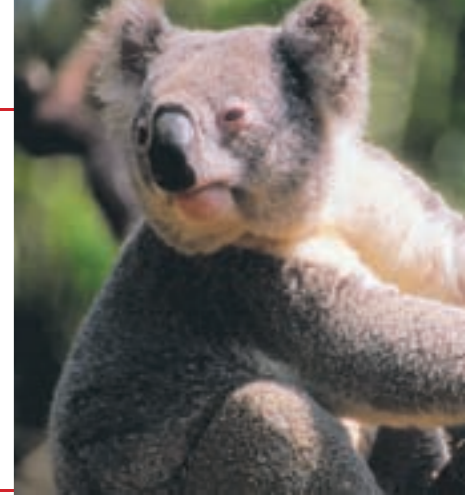


#2362
8x32 W.A.

ACTION • KONUSMALL ◆

Konus Action binoculars give you the possibility to carry the power of observation anywhere. Their reduced dimensions, the optical quality and the special rubber covering, make them indispensable items for travelling, trekking, following sport events and so on. You can choose from different models, with fixed or central focus and Ruby coated optics, all supplied with case and instructions in 8 languages. The Konusmall is a super compact monocular but it still provides a powerful 10x magnification and is packed in a beautiful 6 pcs display box.

All of these models come with case, strap and instructions in 10 languages.



#2060
10x25 I.F.
SET 6 PCS.



#2030
8x21 C.F.

#2032
10x25 C.F.



#2041
10x25 F.F.

15

CODE	MODEL	TYPE	MAGNIFICATION X Ø OBJECTIVE	FOCUSING	FIELD OF VIEW AT 1000 MT/YDS	EXIT PUPIL MM	WEIGHT GR/OZ	TRIPOD ADAPTABLE
2030	ACTION	Compact	8x21	Central	115m 387ft	2.6	150gr 5.2oz	no
2032	ACTION	Compact	10x25	Central	100m 300ft	2.5	200gr 7.05oz	no
2041	ACTION	Compact	10x25	Fixed focus	80m 240ft	2.1	170gr 5.9oz	no
2060	KONUSMALL	Monocular	10x25	Individual	100m 300ft	2.5	60gr 2.1oz	no

◆ CENTRAL FOCUS

◆ "RUBY COATING"
OPTICS

◆ RUBBER COVERING



◆ VISION • ZOOMY

Featuring a modern and stylish design, the Zoomy binocular packs a tremendous power into an extremely compact body and is able to deliver up to 17x magnifications. Its utmost versatility and portability have been the keys of its success and have made it one of the true best-sellers in the Konus line. The Vision binoculars are available with either 8x and 10x magnification power, while their PVC body makes for both an attractive appearance and an extremely light weight. All the binoculars are supplied with a case and instructions in 8 languages.

BASIC ◆

Regardless of the category you are into, it is always important to count on a line of products that enables you to compete also at the lowest price level. These binoculars will serve you well for such a purpose, while still featuring a more than satisfactory quality, a great looking packing and some nice cosmetic touches like the silver metal body and the ruby coated lenses. Available in 8x21, 10x25 and 12x32 sizes, the Basics have all the tools to become the cornerstone of every special deal, premium and promotional business of yours.



#2140
8x25 C.F.



#2141
10x25 C.F.



#2059
8-17x25 ZOOM



#2007
8x21 C.F.
GIFTBOX

#2014
8x21 C.F.
CLAMSHELL



#2009
12x32 C.F.
GIFTBOX

#2016
12x32 C.F.
CLAMSHELL



#2008
10x25 C.F.
GIFTBOX



#2015
10x25 C.F.
CLAMSHELL



CENTRAL FOCUS ◆

ZOOM 8-17x25 (#2059) ◆

COATED OPTICS ◆

PVC BODY ◆

STRAP AND CASE INCLUDED ◆

INSTRUCTIONS IN 8 LANGUAGES ◆

ERGONOMIC DESIGN ◆

STYLISH DESIGN ◆

CODE	MODEL	TYPE	MAGNIFICATION X Ø OBJECTIVE	FOCUSING	FIELD OF VIEW 1000 MT/YDS	EXIT PUPIL MM	WEIGHT GR/OZ	TRIPOD ADAPTABLE
2140	VISION	Compact	8x25	Central	110mt 361ft	2.6	150gr 5.2oz	no
2141	VISION	Compact	10x25	Central	96mt 314ft	2.5	150gr 5.2oz	no
2059	ZOOMY 25	Compact Zoom	8-17x25	Central	80m/262ft at 8x 46m/150ft at 17x	3 at 8x	300gr 10.5oz	no

CODE	MODEL	TYPE	MAGNIFICATION X Ø OBJECTIVE	FOCUSING	FIELD OF VIEW AT 1000 MT/YDS	EXIT PUPIL MM	WEIGHT GR/OZ	TRIPOD ADAPTABLE
2007 2014	BASIC	Compact	8x21	Central	122m 366ft	2.7	230gr 8.1oz	no
2008 2015	BASIC	Compact	10x25	Central	96m 288ft	2.5	232gr 8.1oz	no
2009 2016	BASIC	Compact	12x32	Central	90m 270ft	2.5	250gr 8.8oz	no

◆ CENTRAL FOCUS

◆ "RUBY COATING"
OPTICS

◆ RUBBER COVERING

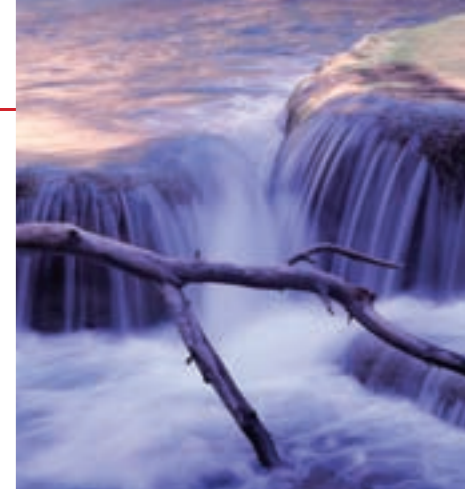


◆ EXPLO

This product has been developed with an highly captivating and original packing which will definitely make it hard to ignore and will therefore draw the attention of every potential buyer, while also protecting the product from shoplifters. Blue rubber, silver metal body and ruby coated lenses are its other features and definitely add on to its overall presentation. Available for a very competitive price in the 8x21 and 10x25 sizes, this exciting article is an ideal choice for gift and promotions and is guaranteed to revolutionize the market of the very popular compact binoculars.

COMPACT BINOCULARS ◆

Offered at a price that can't be beat, the # 2305 and # 2307 are the black and camouflage version of a waterproof and nitrogen filled 8x21 binocular with individual focusing for maximum precision.



#2023
8x21 C.F.



SPECIAL PACKING



#2024
10x25 C.F.



#2307
8x21 I.F.



#2305
8x21 I.F.



CENTRAL FOCUS ◆

RUBY COATING ◆

OPTICS

SPECIAL ANTI-PILFERAGE PACKING ◆

CODE	MODEL	TYPE	MAGNIFICATION X Ø OBJECTIVE	FOCUSING	FIELD OF VIEW 1000M 1000YDS	EXIT PUPIL MM	WEIGHT GR/OZ	TRIPOD ADAPTABLE
2023	EXPLO	Pocket	8x21	Central	126 mt. 378ft.	2.6	150/5.3	no
2024	EXPLO	Pocket	10x25	Central	100 mt. 3007ft.	2.5	200/6.9	no

◆ NITROGEN FILLED

◆ RUBBER COVERED BODY

◆ MULTI COATED OPTICS

◆ WATERPROOF

CODE	MODEL	TYPE	MAGNIFICATION X Ø OBJECTIVE	FOCUSING	FIELD OF VIEW AT 1000 MT/YDS	EXIT PUPIL MM	WEIGHT GR/OZ	TRIPOD ADAPTABLE
2305	FOREST	Waterproof	8x21	Individual	122m 366ft	2.6	250gr 8.8oz	no
2307	VIVISPORT 16	Compact	16x32	Central	82 m 269ft.	2.6	250gr 8.8oz	no

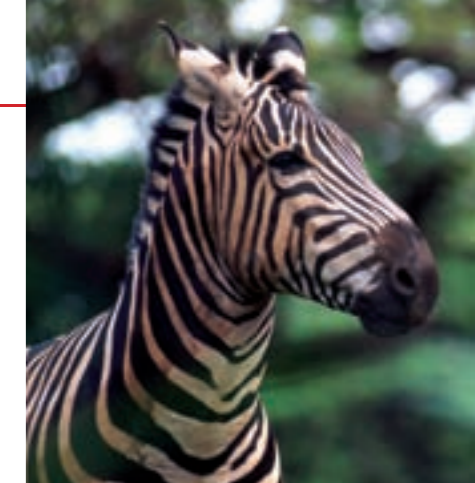
◆ OPERA

A binocular series that is ideal for viewing at its best in closed spaces, such as theaters. With these opera-glasses you will really be in the front row, and you will not miss any detail of the show and its players. The #2053 has a red light which allows you to read the opera booklet during the play without disturbing those around you and requires no focusing.



CENTURY • VIVISPORT ◆

The Century series possess excellent mechanics, good optical quality and have a very practical and elegant rubber covering. Century models 10x25 are provided in blister packages to permit them to be displayed in shops where clients serves themselves. All products are complete with straps, soft case and instructions in 8 languages



CASE INCLUDED

#2055
3x25 C.F.



#2053
3x25 F.F.



#2057
3x25 C.F.

WITH OPTICAL GLASS LENSES ◆

ATTRACTIVE BOX ◆

WITH CENTRAL FOCUS (2055-2057) OR FIXED FOCUS (2053)

#2053 WITH RED LIGHT ◆

WITH CASE ◆

CODE	MODEL	TYPE	MAGNIFICATION X Ø OBJECTIVE	FOCUSING	FIELD OF VIEW AT 1000 MT/YDS	EXIT PUPIL MM	WEIGHT GR/OZ	TRIPOD ADAPTABLE
2053	OPERA-41	Black Opera glass with light	3x25	Fixed focus	127 m 381ft.	6.5	210gr 7.4oz	no
2055	OPERA-43	White Opera glass	3x25	Central	127 m 381ft.	6.5	210gr 7.4oz	no
2057	OPERA-45	Black Opera glass	3x25	Central	127 m 381ft.	6.5	210gr 7.4oz	no

#2034
10x25 C.F.



#2040
16x32 C.F.

CODE	MODEL	TYPE	MAGNIFICATION X Ø OBJECTIVE	FOCUSING	FIELD OF VIEW AT 1000 MT/YDS	EXIT PUPIL MM	WEIGHT GR/OZ	TRIPOD ADAPTABLE
2034	CENTURY	Compact in blister	10x25	Central	100 m 328	2.5	200 7.05	no
2040	VIVISPORT 16	Compact	16x32	Central	82 m 269ft.	2.6	250gr 8.8oz	no

◆ RUBBER COVERED

◆ CENTRAL FOCUS

◆ EASY TO CARRY

◆ BLISTER PACKED

◆ COMPLETE WITH STRAP, SOFT CASE AND INSTRUCTIONS IN 8 LANGUAGES



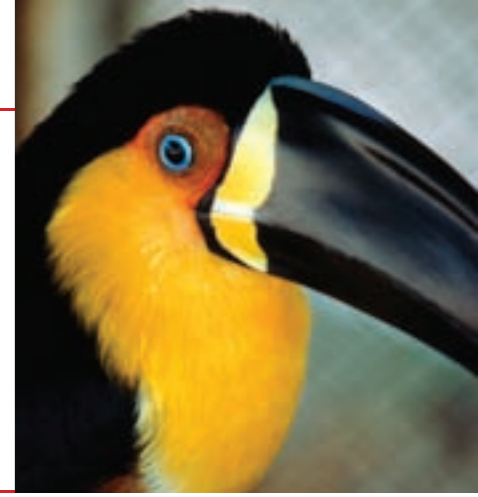
KONUSPOT

These powerful spotting scopes offer high image definition and increased brightness. They have oversized objective lenses (100mm and 80mm) and a zoom which takes the magnification from 20x to 60x. The metal body with rubber armoring is antishock, rainproof and fogproof, and the high quality mechanical construction grants precision and stability. The eyepiece is built at 45° and both models have the extendable rayshades and come completed with camera adapter (to be used with optional T2 ring). The #7120 has a metal table tripod. Both units offer a set/release screw to rotate the spotting scope in different positions. Supplied with case and instructions.

KONUSPOT

The # 7116 and # 7121 are two zoom spotting scopes with innovative design and versatile zoom power that make them the perfect choice for hunters, birdwatchers and nature enthusiasts that are looking for the most rewarding outdoor experience. They are rainproof and fogproof and come complete with tripod, camera adapter and a beautiful carrying case.

If you want to take pictures with a digital camera, the # 1300 adapter will serve you well since it is an universal model that will fit every camera in the market and every spotting scope and telescope of our range.



What's your *game!*

#7120
20-60x80 ZOOM
TABLE TRIPOD INCLUDED
CAMERA ADAPTER INCLUDED
CARRYING CASE INCLUDED

#7122
20-60x100 ZOOM
TRIPOD NOT INCLUDED
CAMERA ADAPTER INCLUDED
CARRYING CASE INCLUDED

#7121
20-60x70 zoom
TABLE TRIPOD INCLUDED
CAMERA ADAPTER INCLUDED
CARRYING CASE INCLUDED

#1300
UNIVERSAL ADAPTER FOR DIGITAL CAMERAS THAT FITS SPOTTING SCOPES AND TELESCOPES

#7116
15-45x65 zoom
TABLE TRIPOD INCLUDED
CAMERA ADAPTER INCLUDED
CARRYING CASE INCLUDED

MULTI-COATED OPTICS

TABLE TRIPOD INCLUDED

(ONLY #7120)

CAMERA ADAPTER INCLUDED

CARRYING CASE INCLUDED

CODE	MODEL	MAGNIFICATION	OBJECTIVE DIAMETRE	FIELD OF VIEW AT 1000 MT/YDS	EXIT PUPIL MM	WEIGHT GR/OZ	LENGTH MM/IN
7120	KONUSPOT-80 WITH TRIPOD	20-60x zoom	80mm	26m/79ft at 20x 14m/41ft at 60x	2.9 mm at 20x 1.2mm at 60x	1550gr 54.6oz	420mm 16.5"
7122	KONUSPOT-100	20-60x zoom	100mm	29m/88ft at 20x 15m/44ft at 60x	5 mm at 20x 1.67 mm at 60x	2400gr 84.6oz	480mm 18.8"

TABLE TRIPOD INCLUDED

CARRYING CASE INCLUDED

CAMERA ADAPTER INCLUDED

CODE	MODEL	MAGNIFICATION	OBJECTIVE DIAMETER	FIELD OF VIEW AT 1000 MT/YDS	EXIT PUPIL MM	WEIGHT GR/OZ	LENGTH MM/IN
7116	KONUSPOT-65	15-45x zoom	65mm	38m/115ft at 15x 20m/59ft at 45x	4 at 15x 1.3 at 45x	670gr 23.6oz	444mm 17.4"
7121	KONUSPOT-70	20-60x zoom	70mm	35m/118ft at 20x 18.6m/61.2ft at 60x	23.5 mm at 20x 7.43 mm at 60x	1600gr 57.14oz	450mm 17.7"



KONUSPOT

The # 7114 is a 15-45x60 with 45° eyepiece. It has impeccable optical quality and features a zoom for maximum power and versatility, while being equipped with a table tripod that is fully made of metal. The new # 7124 is a 15-40x50 with straight eyepiece. It is extremely attractive because of its fully rubber-armoured body and small tripod, but its best asset is definitely its price which is tough to beat.

The # 7130 is the most compact and portable unit of our line thanks to its revolutionary foldable handle. You can therefore carry this model everywhere, as well as you can use it with any photographic tripod such as our # 1950.



#7114
15-45x60 zoom
TABLE TRIPOD
INCLUDED
CARRYING CASE
INCLUDED



#7124
15-40x50 zoom
TABLE TRIPOD
INCLUDED
CARRYING CASE
INCLUDED



#7130
18x50
FOLDABLE HANDLE
WITH TRIPOD
ATTACHMENT

T2 RINGS FOR REFLEX CAMERAS	
#1581	• Minolta AF and Sony DSLR/A
#1582	• NED for Sony mirrorless and Nex
#1584	• Minolta
#1585	• Nikon
#1586	• Olympus
#1588	• Yashica • Contax (no autofocus)
#1591	• S.P. Screw (42:1)
#1597	• Canon Eos
#1598	• Olympus 4/3 - Leica - Panasonic

FEATURES #7114 #7124

TABLE TRIPOD INCLUDED ◆

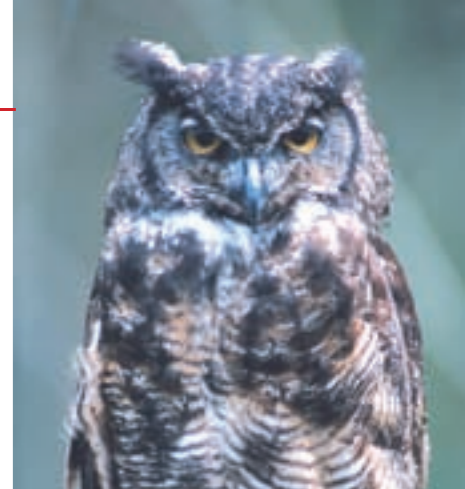
COATED OPTICS ◆

ZOOM POWER ◆

CARRYING CASE INCLUDED ◆

CODE	MODEL	MAGNIFICATION	OBJECTIVE DIAMETRE	FIELD OF VIEW AT 1000 MT/YDS	EXIT PUPIL MM	WEIGHT GR/OZ	LENGTH MM/IN
7114	KONUSPOT-60	15-45x zoom	60mm	3m/10ft at 15x 14m/48ft at 45x	6 at 15x 1.3 at 45x	920gr 32.45oz	300mm 11.8"
7124	KONUSPOT-50	15-40x zoom	50mm	50m/164ft at 15x 15m/49.2 at 40x	3.57 at 15x 1.25 at 40x	466gr 16.4oz	245mm 9.6"
7130	HANDY - 18	18x	50mm	3°	2.78mm	360gr 12.6oz	200mm 7.8"

KONUSPY-4



This extremely advanced unit is the true evolution of Night Vision optics, thanks to its digital technology which translates into a higher resolution of the image and an increased dependability of the instrument. It features a 3x-6x digital zoom power, laser illuminator, 20mm objective and tripod attachment. Its working distance is about 60 meters or 70 yards and it can be used either outdoor (taking advantage of the faint light provided by the moon and the stars) or even indoor (activating the laser illuminator when in total darkness).



#7924
NIGHT VISION DEVICE
3x ~ 6x WITH DIGITAL ZOOM

THE KONUSPY-4 CAN BE CONNECTED TO A SPOTTING SCOPE WITH A #1300 ADAPTER THUS ALLOWING NIGHT VISION AT HIGH MAGNIFICATION POWER AND WORKING DISTANCE



◆ 3x-6x DIGITAL ZOOM

◆ AUTO SHUT OFF

◆ ADJUSTABLE ILLUMINATION AND BRIGHTNESS

◆ ERGONOMIC, COMPACT AND LIGHTWEIGHT

◆ IR ILLUMINATOR INCLUDED

◆ 1/4" TRIPOD ATTACHMENT

CODE	MODEL	TYPE	MAGNIFICATION	OBJECTIVE DIAMETER	SENSOR	MAXIMUM DISTANCE OF OBSERVATION	WEIGHT GR./OZ	TRIPOD ADAPTABLE
7924	KONUSPY-4	Opto-electronical night vision device	2x-6x	20mm	VGA CMOS	60m	276gr 9.73oz	yes

◆ TRIPODS

Spotting scopes and big binoculars like the 20x80 need a tripod to be fully effective on the field and Konus is therefore offering a comprehensive range that suits every possible need.

The # 1954 is our sturdiest and most professional model with enhanced carrying capability. The # 1950 is an intermediate model with great versatility and competitive price.

All of our tripods also fit traditional cameras and digital cameras and have therefore become some of our best-selling accessories.

TRIPODS ◆

The optical quality of a spotting scope must be combined with the stability of a tripod in order to be fully appreciated.

Our # 1951 and # 1952 models are extremely compact and portable, yet dependable and very affordable too.

Our brand new # 1955 is a table tripod that is fully made of metal.

All of our tripods also fit traditional cameras and digital cameras and can therefore generate a valuable extra business for our customers.



TWO LEVEL BUBBLES



QUICK RELEASE PLATFORM

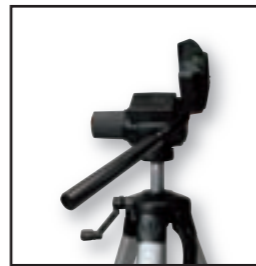


HEIGHT
168cm/5.5ft
WEIGHT
2.3kg/162oz

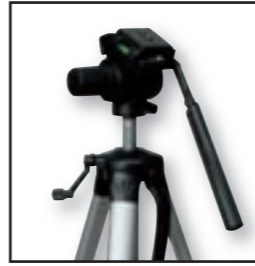
#1954
3 SECTIONS
WITH CARRYING
CASE AND
TWO LEVEL
BUBBLES



ANTI-SLIP FEET



90° MOVEMENT



TWO LEVEL BUBBLES

#1950
3 SECTIONS
WITH CARRYING
CASE AND
TWO LEVEL
BUBBLES

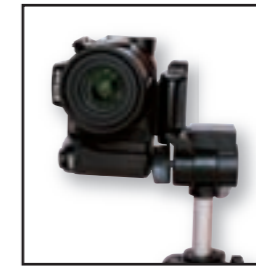


HEIGHT
160cm/5.2ft
WEIGHT
1.7kg./59.9oz

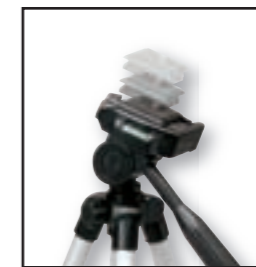
#1952
3 sections
WITH CARRYING
CASE
2 LEVEL
BUBBLES



HEIGHT
130cm
4.2ft
WEIGHT
0.9 kg
31.7oz



90°MOVEMENT



QUICK
RELEASE
PLATFORM

#1951
4 sections
WITH CARRYING
CASE AND
LEVEL
BUBBLE



HEIGHT
106cm
3.4FT
WEIGHT
0.38kg
13.4oz

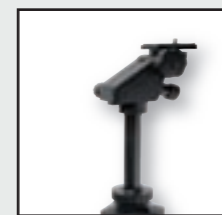


#1955
TABLE

HEIGHT
39cm
15.3"
WEIGHT
0.39kg
13.7oz



MICROMETRIC
REGULATION



ADJUSTABLE
HEIGHT

◆ MOUNTS & TELESCOPES

ALTAZIMUTH MOUNT: This is a basic mount that can be used to manually move a telescope along two perpendicular axis of motion. Its biggest advantage is its simplicity which makes it very practical for beginners telescopes.

EQUATORIAL MOUNT: This is a more advanced mount that is more naturally suited for tracking astronomical objects in the sky. This is particularly important for astrophotography, as well as more advanced amateur astronomy.

DIGIMAX MOUNT: This is the most sophisticated mount because it takes full advantage of a microprocessor-based integrated controller that will automatically point the telescope to any astronomical object that the user selects from a huge database of over 40,000 objects.

◆ DIGIMAX-130 MAKSUTOV ◆

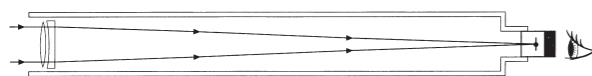
This brand new telescope is a Maksutov-Cassegrain that combines an impeccable optical quality with the finest mechanical features, such as its heavy-duty mount with steel tripod and its smooth focusing system. Having a D.130mm objective and a 1500mm focal length, this model is an ideal choice for both planetary observations and deep-sky objects. But its main asset is its "Go-To" function that is operated through the highly advanced Skyscan AZ controller and through the internal motor drives, thus giving any inexperienced astronomer the possibility to instantly locate and track more than 43,000 objects in the sky with unparalleled accuracy. Being the most professional model in the Konus range, this telescope is literally in a class of its own.



FEATURES

REFRACTOR

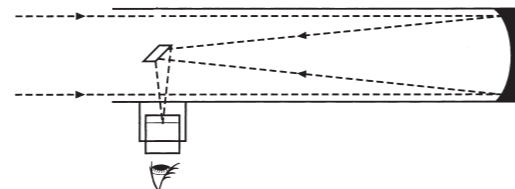
This is a telescope constructed with a Galilean lens system. These telescopes are able to produce images with a greater degree of detail and contrast and are, therefore, particularly suited for observing astronomical objects like the stars and planets. They are also used for terrestrial observation.



REFRACTOR OPTICAL CONSTRUCTION

REFLECTOR OR NEWTONIAN

This is a telescope constructed with a Newtonian mirror system. It has its main advantage in a greater luminosity which gives it the capacity to observe weaker astronomical objects like nebulas and galaxies. The greater the aperture, the greater the field of view and the capacity to absorb light which helps in the observation of deep sky objects with low light emission. High image luminosity is also very important for astronomical photography.



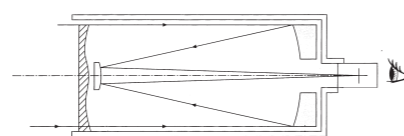
NEWTON OPTICAL CONSTRUCTION

CASSEGRAIN

With equal aperture, these telescopes have a smaller size and weight than Refractors or Newtonian Telescopes. The Cassegrain consists of a parabolic mirror with a hole in the centre and a small convex secondary mirror with a hyperbolic shape, aligned with the primary mirror.

The luminous rays reflected from the primary mirror converge on the secondary mirror, and are reflected again towards the primary mirror through the central hole, coming into focus on the focal plane on the other side of the hole. Two different versions of the Cassegrain system are available under the names of MAKSUTOV-CASSEGRAIN and SCHMIDT CASSEGRAIN.

The optical pattern of these two telescopes are similar, the main difference the presence of a lens that closes the mouth of the telescope, supporting the secondary mirror.



CASSEGRAIN OPTICAL CONSTRUCTION

CHOOSING A TELESCOPE

IN CHOOSING A TELESCOPE IT IS IMPORTANT TO CONSIDER ITS INTENDED USE, ALSO TAKING INTO ACCOUNT THE SIZE AND MANAGEABILITY OF THE INSTRUMENT

USE FORESEEN	SUGGESTED MODEL
TERRESTRIAL VIEW OBSERVATIONS OF PLANET AND STARS	REFRACTOR - MAKSUTOV-CASSEGRAIN
OBSERVATIONS OF GALAXIES NEBULAS, DEEP SKY OBJECTS	NEWTONIAN - MAKSUTOV-CASSEGRAIN
PHOTOGRAPHIC OBSERVATIONS	NEWTONIANS WITH MOTOR
KIDS AND ASTRONOMY BEGINNERS	KONUSPACE - KONUSTART TELESCOPES

#1771
Ø130mm (5.11")
F.1500
MAKSUTOV
COMPUTER



OBJECTS THAT CAN BE SEEN WITH DIGIMAX-130
NAMED STARS: 211 OBJECTS
TOUR: 176 OBJECTS
DOUBLE STARS: 55 OBJECTS
VARIABLE STARS: 20 OBJECTS
PLANETS AND MOON: 9 OBJECTS
NGC CATALOG: 7840 OBJECTS
IC CATALOG: 5386 OBJECTS
MESSIER CATALOG: 110 OBJECTS
CALDWELL CATALOG: 109 OBJ.
SAO CATALOG: 29523 OBJECTS

OPTIONAL ACCESSORIES
#1054 • 2X BARLOW LENS
#1070 • DOUBLE PHOTO ADAPTER
#1241 • EYEPIECE PLOSSL 4 Ø31.8MM (1.25")
#1242 • EYEPIECE PLOSSL 6,3 Ø31.8MM (1.25")
#1277 • EYEPIECE KELLNER 12,5 Ø31.8MM (1.25")
#1278 • EYEPIECE KELLNER 20MM Ø31.8MM (1.25")
#1300 • DIGITAL CAMERAS PHOTO ADAPTER
T2 RINGS: SEE PAGE 32

DATABASE WITH 43439 VISUALIZABLE OBJECT

- ◆ SIMPLE TO MOUNT, DISMOUNT AND CARRY
- ◆ PRECISE AND EASY TO USE FOCUSING
- ◆ IDEAL FOR OBSERVATION AND PHOTOGRAPHY
- ◆ ULTRA-PRECISE MECHANIC FOR EXTRA STABILITY AND PRECISE AIMING
- ◆ NEW GO-TO SOFTWARE SKYSCAN TYPE SIMPLE AND EASY
- ◆ POSSIBILITY TO PROGRAM AN ASTRONOMICAL TOUR

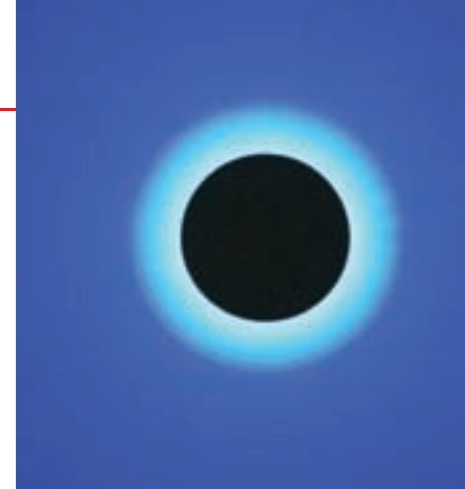
CODE	MODEL	TYPE	FOCAL LENGTH	TECHNICAL SPECIFICATIONS	MAGNIFICATIONS
1771	DIGIMAX-130	Maksutov Ø130mm (5.11")	1500 mm f 11.5	Multi-coated optics, computerized GOTO function with high accuracy and instant localization of more than 43,000 astronomical objects. Functions with 8 AA batteries. Features the "Stardot" finderscope, two Plossl 10mm and 17mm eyepieces, metal tripod, astronomical prism, moon filter and instructions for use.	150x 88x

◆ DIGIMAX-90 MAKSUTOV

The Digimax-90 takes full advantage of the Skyscan AZ controller which is the most advanced GOTO tracking system in its class. This system is operated through electrical DC motor drives which will generate an incredibly silent and fluid movement, coupled with a low battery consumption. Fast and highly responsive, the Skyscan AZ will locate with utmost precision over 43,000 astronomical objects and will automatically point the telescope, thus allowing every beginner and amateur astronomer to access a lifetime of breathtaking exploration of the Universe.

◆ SKY EXPLORER SOFTWARE

Most of KONUS telescopes include a free copy of the Windows based software "Sky Explorer", which is a special version of the well-known planetarium software Perseus. This software will soon become a perfect companion while observing. You can use it as an atlas - with endless information available - to plan your activities on the field, or you can use it to predict or reconstruct the sky as it was (or will be) from any place on Earth, in any time. You can simulate famous eclipses, search for occultations, and much more. Have fun and add another dimension to your observations with "Sky Explorer".



INCLUDES TWO CARRYING CASES AND A CD-ROM

OBJECTS THAT CAN BE SEEN WITH DIGIMAX-90
NAMED STARS: 211 OBJECTS
TOUR: 176 OBJECTS
DOUBLE STARS: 55 OBJECTS
VARIABLE STARS: 20 OBJECTS
PLANETS AND MOON: 9 OBJECTS
NGC CATALOG: 7840 OBJECTS
IC CATALOG: 5386 OBJECTS
MESSIER CATALOG: 110 OBJECTS
CALDWELL CATALOG: 109 OBJ.
SAO CATALOG: 29523 OBJECTS

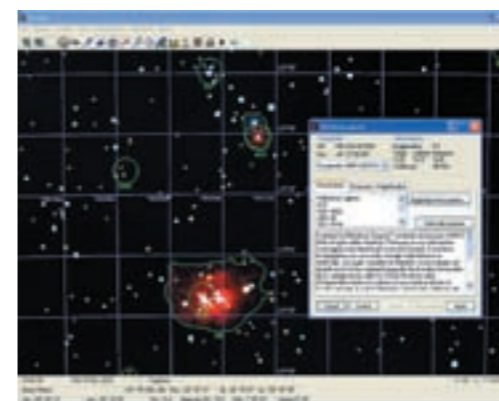
DATABASE WITH 43439 VISUALIZABLE OBJECT AS SHOWN BELOW

OPTIONAL ACCESSORIES
#1054 • 2X BARLOW LENS
#1070 • DOUBLE PHOTO ADAPTER
#1241 • EYEPIECE PLOSSL 4 Ø31.8MM (1.25")
#1242 • EYEPIECE PLOSSL 6,3 Ø31.8MM (1.25")
#1277 • EYEPIECE KELLNER 12,5 Ø31.8MM (1.25")
#1278 • EYEPIECE KELLNER 20MM Ø31.8MM (1.25")
#1300 • DIGITAL CAMERAS PHOTO ADAPTER
T2 RINGS: SEE PAGE 32



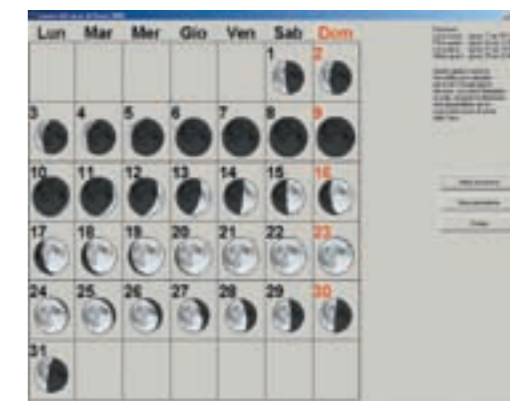
#1770
Ø90 F.1250
MAKSUTOV
COMPUTER

CODE	MODEL	TYPE	FOCAL LENGTH	TECHNICAL SPECIFICATIONS	MAGNIFICATIONS
1770	DIGIMAX-90	Maksutov Ø90mm (3.5")	1250 mm f 13.9	Multi-coated optics, computerized GOTO function with high accuracy and instant localization of more than 43,000 astronomical objects. Functions with 8 AA batteries. Features the "Stardot" finderscope, two Plossl 10mm and 17mm eyepieces, metal tripod, astronomical prism, moon filter and instructions for use.	125x 73x



WHAT CAN THE "SKY-EXPLORER" SOFTWARE DO?

- A) Predicts or recreates the appearance of the sky and the position of the astronomical objects in any time period, past, present or future.
- B) Identifies with extreme precision the astronomical objects that can be seen from the location of the observer.
- C) Lets you know in advance which astronomical objects will be visible on a certain date in every place all around the world.
- D) Every astronomical object is represented in 3 dimensions with the most realistic graphics, way better than any competing software in the market.
- E) The software comes with a database featuring hundreds of thousands of astronomical objects.
- F) Every astronomical simulation is done with the most accurate computation accuracy, thus making this software the most advanced in the market.
- G) The software is in English language, with operational instructions in English, Italian and Spanish.



TECHNICAL SPECIFICATIONS

- Vectorial graphic engine. · Solar system bodies with 3D realism, represented with correct shadows
- Astonishing graphics, for a perfect realism
- The Moon uses "bump mapping" for accurate reproduction of shadows with the phase.
- Huge stellar and deep-sky objects databases.
- Free updates (from the web) for comets and asteroid orbital data.
- Photorealistic panoramas: take a panoramic shot of your usual observing locations, and import it to "Sky Explorer". You can calculate exactly when Jupiter will appear from behind that tree!
- Specific tools to plan your night trips on the field, like monthly moon calendars and night duration charts.

- ◆ ADDS GREAT VALUE TO THE TELESCOPE
- ◆ AN INCOMPARABLE TOOL WITH AN ARRAY OF ASTRONOMICAL DATA AND INFORMATION
- ◆ YOUR PERFECT COMPANION FOR THE MOST IMMERSIVE "ON THE FIELD" EXPERIENCE

MOUNT SUPPLIED WITH L-SUPPORT
WITH PHOTO ADAPTER FOR
INSTALLING ANY PHOTO DEVICE WITHIN
THE WEIGHT OF 4KG (141oz)

THE EXTERNAL PART OF THE
EYEPIECE HOLDER TUBE IS EQUIPPED
WITH A SCREW FOR THE
T-2 RING OF YOUR CAMERA.

POWERFUL AND VERSALITILE ENOUGH
TO DELIVER A GREAT PERFORMANCE
WHILE OBSERVING THE
MOON, PLANETS AND THE
MOST BRILLIANT
DEEP-SKY OBJECTS



◆ MOTORMAX-90

This model with Maksutov-Cassegrain construction have a 90mm diameter and provides images of impeccable quality, high resolution and excellent luminosity. The # 1795 Motormax-90 features an extremely compact and lightweight design for maximum portability, coupled with an equatorial mount and a Right Ascension motor drive. The telescope includes a double 45° and 90° star diagonal and two professional Plossl eyepieces.

KONUSKY-200 MOTOR◆

Designed to give the best to the most demanding observers, this model combines maximum power and exceptional luminosity. The motorized equatorial mount and robust steel tripod guarantee optimum stability and ease in following a celestial object. The telescope is supplied with two Plossl eyepieces, a finderscope and instructions in 8 languages.

The #1310 Lasermate is a useful tool for collimating newtonian telescopes in the easiest and most effective way.



#1300
UNIVERSAL ADAPTER
FOR DIGITAL CAMERAS
THAT FITS SPOTTING
SCOPES, TELESCOPES AND
MICROSCOPES



#1795
Ø90-F.1200
MAKSUTOV-
CASSEGRAIN
R.A. MOTOR
INCLUDED

T2 RINGS FOR REFLEX CAMERAS	
#1581	• Minolta AF and Sony DSLR/A
#1582	• NED for Sony mirrorless and Nex
#1584	• Minolta
#1585	• Nikon
#1588	• Yashica • Contax (no autofocus)
#1591	• S.P. Screw (42:1)
#1597	• Canon Eos
#1598	• Olympus 4/3 - Leica - Panasonic

◆ CAN FOCUS ON CLOSE RANGE

OBJECTS BETTER THAN ANY
OTHER TELESCOPE

◆ ITS OPTICAL DESIGN AVOIDS
CHROMATIC ABERRATION.

◆ SUPERB RESULTS WHILE OBSERVING
GLOBULAR CLUSTERS AND
SPLITTING DOUBLE STARS.

◆ ITS SECONDARY MIRROR IS
SMALLER THAN SCHMIDT
CASSEGRAIN MODELS, THUS

MAKING FOR A LESS
NOTICEABLE OBSTRUCTION FACTOR

CODE	MODEL	TYPE	FOCAL LENGTH	TECHNICAL SPECIFICATIONS	MAGNIFICATIONS
1795	MOTORMAX 90	Maksutov-Cassegrain Ø 90 mm (3.5")	1200 mm f/13.3	Multi-coated optics, equatorial mount with R.A. tracking motor, metal tripod from 73 to 121 cm. (from 2.4 to 4 ft), 8x21 finderscope, star diagonal 45° and 90°, moon filter, two eyepieces Ø31.8 (1.25") Plossl 10 mm and Plossl 17 mm, instructions for use in 8 languages.	120x 71x



#1793
Ø200 - F.1000
NEWTON
2 MOTORS INCLUDED



#1310
LASERMATE
LASER COLLIMATOR THAT WILL
ENABLE YOU TO GET THE PERFECT
ALIGNMENT AND THE SHARPEST
POSSIBLE IMAGES WITH
YOUR REFLECTOR TELESCOPES.

OPTIONAL ACCESSORIES FOR KONUSKY	
#1048	• Image rectifier
#1054	• 2x Barlow Lens/Photo adapter
#1070	• Double photo adapter
#1241	• Eyepiece Plossl 4mm Ø31.8mm (1.25)
#1242	• Eyepiece Plossl 6.3 Ø31.8mm (1.25)
#1244	• Eyepiece Plossl 10 Ø31.8mm (1.25)
#1245	• Eyepiece Plossl 17 Ø31.8mm (1.25)
#1277	• Eyepiece Kellner 12.5 Ø31.8mm (1.25)
#1278	• Eyepiece Kellner 20 Ø31.8mm (1.25)
#1300	• Adattatore foto per macchine digitali
#1310	• Digital cameras photo adapter
T2 rings: see page 32	

CODE	MODEL	TYPE	FOCAL LENGTH	TECHNICAL SPECIFICATIONS	MAGNIFICATIONS
1793	KONUSKY 200 MOTOR	Newtonian Ø 200 mm (8")	1000 mm f/5	Coated primary mirror, metal tube assembly, precision heavy duty advanced equatorial mount with motor for both axes and 6x20 polar scope. Sturdy adjustable metal tripod from 73 to 121 cm. (from 2.4 to 4 ft), 8x50 finderscope, moon filter, 2 eyepieces diam 31.8mm (1.25") Plossl 10 mm and Plossl 25 mm, instructions.	100x 40x

◆ GREAT POWER THANKS TO ITS
1000MM FOCAL LENGTH

◆ IMPRESSIVE LIGHT-GATHERING
CAPABILITY

◆ OPTICS ARE TREATED TO REDUCE
CHROMATIC ABERRATION

◆ IDEAL CHOICE FOR TAKING PICS

◆ EXCELLENT FOR OBSERVING
GALAXIES AND NEBULAS

◆ DUAL-AXIS MOTOR DRIVE FOR THE
PROFESSIONAL STAR TRACKING

◆ KONUSMOTOR REFLECTORS

The #1781 has a classic 114mm aperture and a super compact 500mm focal length for maximum luminosity, while the #1786 is a more advanced version featuring a larger 130mm diameter, a 1000mm focal length and a bigger mount. Both the models include the "Sky Explorer" software, the R.A. motor drive, the electric focuser and two carrying cases for enhanced portability.

These two newtonian models are the perfect choice for an introductory telescope.

◆ KONUSMOTOR REFRACTOR

This refractor telescope feature an impressive optical and mechanical quality that translates into a great visual performance on the field. And it comes complete with all the tools that will enable you to maximize your observations: the incomparable "Sky-Explorer" software and its countless functions, the motor drive for astro-photography and the soft-cases for carrying the instruments everywhere without the nuisance of assembling and disassembling them. Furthermore, the # 1782 model also comes complete with an electric focuser as an additional value.



CD-ROM WITH ASTRONOMICAL SOFTWARE (SEE PAGE 31)

+



ELECTRIC FOCUSER

+



DELUXE CARRYING CASE

#1781
KONUSMOTOR-500
Ø114 F.500
NEWTONIAN
MOTOR INCLUDED

#1786
KONUSMOTOR-130
Ø130 F.1000
NEWTONIAN
MOTOR INCLUDED

OPTIONAL ACCESSORIES FOR K.MOTOR NEWT.

#1048 • Image rectifier
#1054 • 2x Barlow Lens/Photo adapter
#1061 • Mylar sun filter for #1781
#1070 • Double photo adapter
#1241 • Eyepiece Plossl 4mm Ø31.8mm (1.25)
#1242 • Eyepiece Plossl 6.3 Ø31.8mm (1.25)
#1244 • Eyepiece Plossl 10 Ø31.8mm (1.25)
#1245 • Eyepiece Plossl 17 Ø31.8mm (1.25)
#1277 • Eyepiece Kellner 12.5 Ø31.8mm (1.25)
#1278 • Eyepiece Kellner 20 Ø31.8mm (1.25)
#1300 • Digital cameras photo adapter
#1310 • Laser collimator for Newtonians
T2 rings: see page 32

CODE	MODEL	TYPE	FOCAL LENGTH	TECHNICAL SPECIFICATIONS	MAGNIFICATIONS
1781	KONUSMOTOR 500	Newton Ø 114 mm (4.5")	500 mm f/4.3	Multi coated mirror, equatorial mount with R.A. tracking motor, two section metal tripod from 69 to 116 cm. (2.3ft to 3.8ft), red dot finder, moon filter, 2 diam 31.8 mm (1.25") eyepieces Plossl 10 mm and Plossl 17 mm, electric focuser, moon and sky map, two soft cases for carrying the telescope, one "Sky Explorer" software in english, instructions in 8 languages.	50x 30x
1786	KONUSMOTOR 130	Newton Ø 130 mm (5.2")	1000 mm f/8	Multi coated mirror, equatorial mount with R.A. tracking motor, two section metal tripod from 67 to 107 cm. (2.3ft to 3.8 ft), red dot finder, moon filter, 2 diam 31.8 mm (1.25") eyepieces Plossl 10 mm and Plossl 17mm, moon and sky map, two soft cases for carrying the telescope, one "Sky Explorer" software in english, electric focuser and instructions in 8 languages.	100x 59x

THESE TWO MODELS ARE
EXTREMELY COMPACT

EXCELLENT LUMINOSITY THAT
PROVES TO BE VERY USEFUL WHILE
DOING ASTROPHOTOGRAPHY

GOOD FOR THE OBSERVATIONS OF
MOON AND PLANETS TOO

AMPLE DIAMETER AND LIGHT-
GATHERING CAPABILITY MAKE THEM
AN IDEAL CHOICE FOR "DEEP-SKY"
OBSERVATIONS



OPTIONAL ACCESSORIES FOR KONUSMOTOR REFRACTORS

#1047 • Image rectifier
#1054 • 2x Barlow Lens/Photo adapter
#1070 • Double photo adapter
#1241 • Eyepiece Plossl 4mm Ø31.8mm (1.25)
#1242 • Eyepiece Plossl 6.3 Ø31.8mm (1.25)
#1244 • Eyepiece Plossl 10 Ø31.8mm (1.25)
#1245 • Eyepiece Plossl 17 Ø31.8mm (1.25)
#1277 • Eyepiece Kellner 12.5 Ø31.8mm (1.25)
#1278 • Eyepiece Kellner 20 Ø31.8mm (1.25)
#1300 • Digital cameras photo adapter
T2 rings: see page 32

#1782
KONUSMOTOR-70
Ø70 F.900
REFRACTOR
MOTOR INCLUDED



CD-ROM WITH ASTRONOMICAL SOFTWARE (SEE PAGE 31)

+



ELECTRIC FOCUSER

+



DELUXE CARRYING CASE

- ◆ EASY TO ASSEMBLE
- ◆ THE MODEL FEATURES AN EQUATORIAL MOUNT
- ◆ EQUATORIAL MOUNT
- ◆ GOOD "ALL AROUND" TELESC. FOR BEGINNERS AND INTERMEDIATE USERS
- ◆ INCLUDES THE ELECTRIC FOCUSER
- ◆ INCLUDING R.A. MOTOR DRIVE FOR STAR TRACKING AND PHOTO USE

CODE	MODEL	TYPE	FOCAL LENGTH	TECHNICAL SPECIFICATIONS	MAGNIFICATIONS
1782	KONUSMOTOR 70	Refractor Ø70 mm (2.7")	F.900 mm f/12	Intubed and collimated optic, equatorial mount with R.A. tracking motor, two section metal tripod from 69 to 116 cm. (2.3 to 3.8 ft), red dot finder, moon filter, 90° diagonal mirror, 2 diam. 31.8 mm (1.25") eyepieces Plossl 10 mm and Plossl 17 mm, moon and sky map, one soft case for carrying the telescope, one "Sky Explorer" software in english, electric focuser, instructions.	90x, 53x

◆ KONUSTART REFRACTORS

These telescopes have always been very successful among young astronomers and are now more appealing than ever in their new version featuring the "Sky Explorer" software, the electric focuser and a deluxe carrying case. The #1741 also includes the R.A. motor drive.

◆ KONUSPACE REFRACTORS

Although competitively priced, the Konuspace-6 and Konuspace-7 are excellent optical instruments that will prove to be an invaluable tool to begin observing the sky and discovering its marvels. Both the models include the "Sky-Explorer" software for the most complete and immersive astronomical experience, be it on the field or on the screen of your PC.



CD-ROM WITH ASTRONOMICAL SOFTWARE (SEE PAGE 32)

+



ELECTRIC FOCUSER

+



DELUXE CARRYING CASE

#1741
KONUSTART-900
Ø60 F.900
REFRACTOR
MOTOR INCLUDED

#1736
KONUSTART-700
Ø60 F.700
REFRACTOR

OPTIONAL ACCESSORIES FOR KONUSTART	
#1034	• Moon filter
#1047	• Image rectifier
#1054	• 2x Barlow Lens/Photo adapter
#1070	• Double photo adapter
#1241	• Eyepiece Plossl 4mm Ø31.8mm (1.25)
#1242	• Eyepiece Plossl 6.3 Ø31.8mm (1.25)
#1244	• Eyepiece Plossl 10 Ø31.8mm (1.25)
#1245	• Eyepiece Plossl 17 Ø31.8mm (1.25)
#1277	• Eyepiece Kellner 12.5 Ø31.8mm (1.25)
#1278	• Eyepiece Kellner 20 Ø31.8mm (1.25)
#1300	• Digital cameras photo adapter
T2 rings: see page 31	

CODE	MODEL	TYPE	FOCAL LENGTH	TECHNICAL SPECIFICATIONS	MAGNIFICATIONS
1736	KONUSTART-700	Refractor Ø 60 mm (2.3")	700 mm f/11.6	Collimated and intubated optics, altazimuth mount, two sections metal tripod from 67 to 116 cm. (from 2.2ft to 3.8ft), red dot finder, 2x barlow lens, 1.5x image rectifier, moon filter, 2 diam. 31.8mm (1.25") eyepieces H8 and H20, electric focuser moon and sky map, "Sky Explorer" software in english, instructions.	88x, 176x, 35x, 70x
1741	KONUSTART 900	Refractor Ø 60 mm (2.3")	900 mm f/15	Multi coated mirror, equatorial mount with R.A. tracking motor, two section metal tripod from 67 to 107 cm. (2.3ft to 3.8ft), red dot finder, moon filter, 2 diam 31,8 mm (1.25") eyepieces Plossl 10 mm and Plossl 17mm, electric focuser moon and sky map, "Sky Explorer" software in english, instructions.	113x, 226x, 45x, 90x

IDEAL CHOICE FOR BEGINNERS ◆

EASY TO ASSEMBLE AND GET STARTED WITH ◆

COME WITH "SKY-EXPLORER" ASTRONOMICAL SOFTWARE ◆

COME WITH SOFT CARRYING CASE FOR MAXIMUM PORTABILITY ◆

WILL WORK WELL FOR TERRESTRIAL USE ◆

WILL DELIVER A GOOD PERFORMANCE ◆



CD-ROM WITH ASTRONOMICAL SOFTWARE SEE PAGE 32

#1744
KONUSPACE-7
Ø60 F.900
REFRACTOR

#1743
KONUSPACE-6
Ø60 F.800
REFRACTOR

ACCESSORIES SEE PAGE 38



CODE	MODEL	TYPE	FOCAL LENGTH	TECHNICAL SPECIFICATIONS	MAGNIFICATIONS
1743	KONUSPACE 6	Refractor Ø 60 mm (2.3")	800 mm f/13	Intubed and collimated optics, altazimuth yoke mount, with micrometric adjustments, two section metal tripod from 67 to 116 cm. (from 2.2 to 3.8ft), 5x24 finderscope, 90° diagonal mirror, moon filter, 2 diam. 24,5mm (0.9") eyepieces H8 and H20, "Sky Explorer" software in english, moon and sky map, instructions.	100x, 40x
1744	KONUSPACE 7	Refractor Ø 60 mm (2.3")	900mm f/15	Equatorial mount with slow motion control cables, two section metal tripod from 67 to 116 cm. (from 2.2 to 3.8ft), 5x24 finderscope, moon filter, 2 diam. 24,5mm (0.9") eyepieces H8 and H20, "Sky Explorer" software in english, moon and sky map, instructions.	112x, 45x

◆ IDEAL CHOICE FOR BEGINNERS

◆ EXCELLENT ALSO IN TERRESTRIAL USE

◆ COME WITH "SKY-EXPLORER" ASTRONOMICAL SOFTWARE

◆ WILL DELIVER A GOOD PERFORMANCE WHILE OBSERVING

◆ EASY TO ASSEMBLE AND GET STARTED WITH

◆ GREAT FOR TERRESTRIAL USE

KONUSPACE REFRACTORS

The Konospace-4 and 5 telescopes can be used as either astronomical or terrestrial telescopes. They come equipped with a zoom eyepiece which gives gradual magnifications from 6x to 28x, and they also include the "Sky-Explorer" software for the most complete and immersive astronomical experience, both on the field and on the screen of your PC.

BATTERIES

As an additional service to our customers, Konus is now offering a wide range of batteries that are at the same time long lasting and environmentally friendly. The models in our range will fit any camera, flashlight, MP3 reader, remote control, electronic equipment and so forth. They are available in the alkaline and lithium types and in the most popular sizes, while their packing is a clamshell according to the standard of the industry.



CD-ROM WITH ASTRONOMICAL SOFTWARE SEE PAGE 31 ONLY FOR #1731

OPTIONAL ACCESSORIES FOR KONUSPACE	
#1042	• Image rectifier 1.5x
#1051	• 2x Barlow Lens Ø24.5mm
#1069	• 1.5x Photo adapter Ø24.5mm
#1090	• Electric focuser
#1300	• Digital cameras photo adapter
#1542	• Eyepiece F 6 mm Ø24.5mm (0.9")
#1545	• Eyepiece H 12,5mm Ø24.5mm (0.9")
#1553	• Eyepiece HM 25 mm Ø24.5mm (0.9")



#1731
KONUSPACE-5
Ø50 F.700
REFRACTOR

#1729
KONUSPACE-4
Ø50 F.600
REFRACTOR

CODE	MODEL	TYPE	FOCAL LENGTH	TECHNICAL SPECIFICATIONS	MAGNIFICATIONS
1729	KONUSPACE 4	Refractor Ø 50 mm (2")	600 mm f/12	Table tripod with handle, 5x24 finderscope, 90° diagonal mirror, two diam 24,5mm (0.9") eyepieces F6 mm and H12.5 mm, terrestrial zoom eyepiece, instructions.	48x, 100x 6x-28x zoom
1731	KONUSPACE 5	Refractor Ø 50 mm (2")	700 mm f/14	Metal tube assembly, equatorial mount with R.A. tracking motor, two section metal tripod from 69 to 116 cm. (from 2.2ft to 3.8ft), red dot finder, 2x barlow lens, 1.5x image rectifier, moon filter 2 diam. 31,8mm (1.25") eyepieces H8 and H20, moon and sky map, "Sky Explorer" software in english, instructions.	120x, 56x 6x-28x zoom

IDEAL CHOICE FOR
BEGINNERS

EXCELLENT ALSO FOR
TERRESTRIAL USE

COME WITH "SKY-EXPLORER"
ASTRONOMICAL SOFTWARE
(#1731 ONLY)

WILL DELIVER A GOOD
PERFORMANCE WHILE OBSERVING

EASY TO ASSEMBLE AND
GET STARTED WITH

ZOOM EYEPIECE



#3850 CR123A
CR17345 LITHIUM 3V
SET 10 BLISTERS
OF 1 BATTERY



#3851 CR2
CR17355 LITHIUM 3V
SET 10 BLISTERS
OF 1 BATTERY



#3852
LR44 - V13GA - KA76
ALKALINE 1.5V
SET 10 BLISTERS OF 1 BATTERY

#3858
CR2016
LITHIUM 3V
SET 10 BLISTERS
MULTIBLISTER
OF 5 BATTERIES



#3853
LR6 - ALKALINE AA
SET 10 BLISTERS
OF 4 BATTERIES



#3854
LR03 - ALKALINE AAA
SET 10 BLISTERS
OF 4 BATTERIES



#3855
LR14 - ALKALINE C
SET 10 BLISTERS
OF 2 BATTERIES

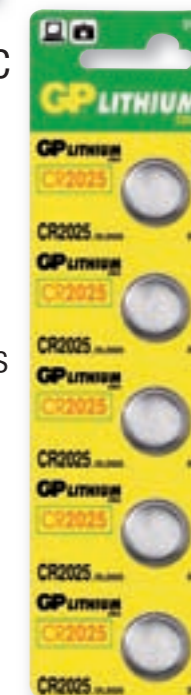


#3856
LR20 - ALKALINE D
SET 10 BLISTERS
OF 2 BATTERIES



#3857
6LF22 - ALKALINE 9V
TRANSISTOR
SET 10 BLISTERS OF 1 BATTERY

#3859
CR2025
LITHIUM 3V
SET 10 BLISTERS
MULTIBLISTER
OF 5 BATTERIES



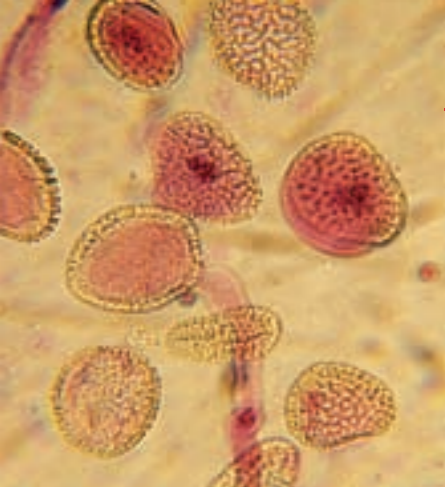
#3860
CR2032 LITHIUM 3V
SET 10 BLISTERS
MULTIBLISTER
OF 5 BATTERIES



◆ TYPES OF MICROSCOPES

Indispensable in the professional field, Konus microscopes have been used for years by universities, research laboratories, medical and orthodontic professionals and for the analysis and the observations of specimens. They are also ideal for hobbies such as coins, fossils and stamps collection.

A microscope is the best solution for enlarging and observing everything impossible to see with only the naked eye.



ALL MICROSCOPES
HAVE LOW VOLTAGE

BIOLOGICAL:

A biological microscope can have either a monocular or a binocular head. This microscope provides high magnifications and is therefore suited to observe specimens or sections of organs and tissues, placed on a transparent slide that is illuminated through a mirror or with a transmitted light illuminator.

STEREOSCOPICAL:

A stereoscopic microscope is a binocular or trinocular unit and provides a tridimensional view. It is used to observe opaque objects which light does not pass through, like crystals, fossils and coins. Its magnification power is lower than a biological instrument (from 5x to 100x) and its illumination system usually works with an incidental light, although in some cases a transmitted light illuminator can be used too if you are observing transparent specimens (for example crystals).

4 POINTS TO KNOW

1 - MAGNIFICATION: The magnification at which you are observing is the result between the magnification of eyepiece and the objective. Please remember that if you increase the magnification the field of view will consequently decrease.

2 - ILLUMINATION: Illumination could be from incidental light, (from above) very useful in stereoscopic microscopes, or transmitted light (from below), for biological microscopes. Some models, (for example code 5420 Diamond) have double illumination, offering dual usage.

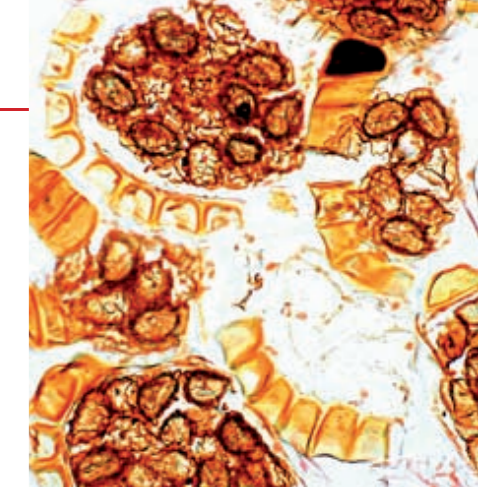
3 - FOCUSING: Precision focusing is very important in observations, for this reason most Konus microscopes have double focusing: macrometrical and micrometrical (or fine focusing).

4 - ACCESSORIES: It is important to remember that the microscope can be used with many optional accessories and connected to a camera or a CCD camera.

◆ “MICROCOSMO” CD-ROM ◆

For many years, Konus has done a consistent effort to make the marvels of science as accessible as possible

to young kids and students. Developing one of the most comprehensive lines of microscopes in the market was just the first step though, since we are now releasing an even more ambitious project named “Microcosmo”.



beginner will quickly become able to understand and utilize his microscope as a professional. A separate section of the CD-Rom also teaches you how to do your own experiments and researches with the microscope.

Finally, the impressive assortment of the Konus prepared slides (31 series, ranging from Biology to Zoology, Botany, Science, etc.) is also introduced and commented by a Professor of a renowned University.



#5500 “MICROCOSMO” CD-ROM IN ENGLISH AND ITALIAN

• INDEX

• WHY THE PRESENT CD?

1. WHAT IS A MICROSCOPE?

- What you can observe with a microscope
- The dimensions of microscopic objects

2. KONUS MICROSCOPES

- College Microscope
- Campus Microscope
- Biorex and Infinity Microscopes
- Didactic microscopes by Konus
- Diamond stereoscopic microscope
- Crystal-45 stereoscopic microscope
- Crystal-Pro stereoscopic microscope

3. HOW IS THE MICROSCOPE BUILT?

- Eyepieces
- Objectives and resolving power
- Infinity corrected objectives
- Objectives and aberrations
- Condenser

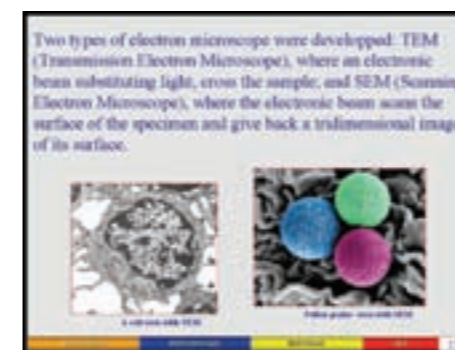
4. HOW THE MICROSCOPE FUNCTIONS AND HOW YOU CAN USE IT

- How does the microscope work?
- Why does a microscope magnify?
- The secrets of focusing
- Observing techniques

5. STEREOSCOPIC MICROSCOPES

6. MICROSCOPY TECHNIQUES

- Dark field microscopy
- Phase contrast microscopy



Each of our microscopes comes with a CD-Rom containing an array of general information on microscopes along with specific material on every Konus model. Every part of the instrument and every optional accessory is explained thoroughly, while actually showing how to use it and how to maximize its performance and get the most fun out of it. So even the most inexperienced

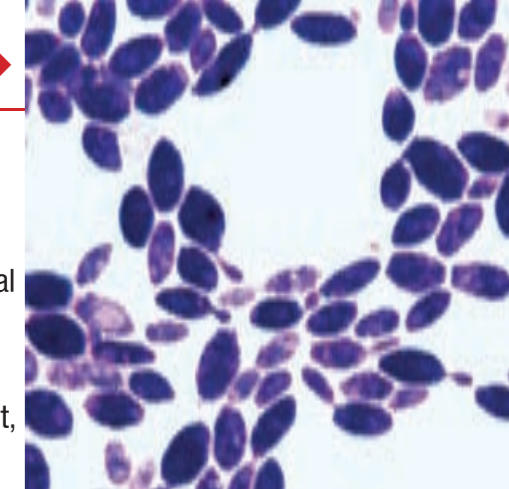
◆ MICROSCOPE INFINITY

This microscope is equipped with infinity objectives in order to deliver the kind of performance that can satisfy even the most demanding users during the most complex laboratory activity. Wavetrains of light leaving the infinity-focused objectives will in fact be collimated, allowing beamsplitters, polarizers, Wollaston prisms and so on to be introduced into the space between the objective and tube lens. The Infinity design also allows the use of larger objectives with better working distance than standard DIN objectives, while also having none of the distortion and aberration problems of traditional microscopes.

◆ MICROSCOPE INFINITY

TECHNICAL FEATURES

360° rotatable binocular head with dioptrical compensation, 30° inclined.
Ergonomical metal stand.
Coaxial, bilateral focusing with stop, 0.002mm graduable. Planachromatic optical system with color correction.
Eyepieces: two eyepieces PL10-18mm "HIGH EYE-POINT" type
Objectives: N°4 planachromatic objectives "ITO" 4x, 10x, 40x and 100x infinity correct, without chromatic aberrations and focus distortions.



CD-ROM INCLUDED
SEE PAGE 41



PHOTOGRAPHIC ACCESSORIES FOR #5606 INFINITY-2
DIGITAL CAMERA
#1300 • DIGITAL CAMERA ADAPTER
REFLEX CAMERA
#5126 • PHOTO ADAPTER + #VARIOUS • T2 RING: ACCORDING TO THE CAMERA'S BRAND
COMPUTER VIDEO
#5829 • SET COMPUTER VIDEO



#5606
INFINITY-2
1000X
BIOLOGICAL
BINOCULAR
INFINITY
OBJECTIVES
40x - 100x
400x - 1000x

TECHNICAL FEATURES
SEE PAGE 42



#5607
INFINITY-3
1000X
BIOLOGICAL
TRINOCULAR
INFINITY
OBJECTIVES
40x - 100x
400x - 1000x

OPTIONAL ACCESSORIES
SEE PAGE 41

PHOTOGRAPHIC ACCESSORIES FOR #5607 INFINITY-3
REFLEX CAMERA
#5660 • PHOTO ADAPTER + EYEPIECE + #VARIOUS • T2 RING: ACCORDING TO THE CAMERA'S BRAND
DIGITAL CAMERA
#5660 • PHOTO ADAPTER + EYEPIECE + #1300 • DIGITAL CAMERA ADAPTER
COMPUTER VIDEO
#5660 • PHOTO ADAPTER + EYEPIECE + #5829 • SET COMPUTER VIDEO

◆ **GRADUATED MOVABLE STAGE WITH DOUBLE NONIUS 132MMX140MM WITH COAXIAL CONTROL WITH MOVEMENT 76x50MM.**

◆ **NA 1.22/0.24 SWING OUT ACHROMATIC CONDENSER WITH IRIS DIAFRAGM.**

◆ **HALOGEN ILLUMINATION 6V/20W REGULABLE WITH POTENTIOMETER**

◆ **THE REGULATION OF CONDENSER HEIGHT IS DONE WITH A LATERAL HANDLE.**

◆ **UNIVERSAL VOLTAGE USA-EU 90V/240V**

◆ **NORMATIVAS CE, UL, CSA, y GS**

◆ **SUPPLIED WITH ANTI-DUST COVER**

◆ **8 LANGUAGES INSTRUCTIONS**

◆ **THE FILTER-HOLDER IS PLACED BELOW THE CONDENSER AND HAS A LIGHT BLUE FILTER IN OPTICAL CRISTAL.**



INCLUDES A CD-ROM WITH
MICROSCOPY LESSONS

MAXIMUM TECHNOLOGY
AND INNOVATION

EXTRAORDINARY FOR PHOTOGRAPHY

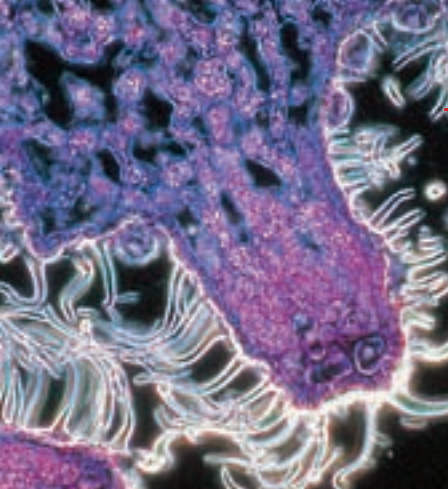
NO REFLEXES

NO DISTORTION AND ABERRATION
PROBLEMS OF TRADITIONAL
MICROSCOPES

OPTIONAL ACCESSORIES INFINITY MICROSCOPES	
#5126 • PHOTO ADAPTER	#5652 • TV ADAPTER SYSTEM 0,5X FOCUSING LENS
#5620 • EYEPIECE 15X WF	#5660 • PHOTO SYSTEM 3,2X WITH PHOTO EYEP. FOR 5607
#5621 • EYEPIECE 20X WF	#5656 • ANALYSER
#5622 • PLAN-ACHROMATIC EYEPIECE P16X	#5657 • ROUNDED MOVABLE STAGE FOR POLARIZATION
#5628 • 20X ACHROMATIC OBJECTIVE	#5658 • WOODEN BOX
#5629 • 60X ACHROMATIC OBJECTIVE	#5829 • SET VIDEO-COMPUTER WITH SOFTWARE
#5631 • HALOGEN BULB 6V/20W	#1300 • DIGITAL CAMERA ADAPTER
#5651 • CO. FILTERS BLUE/GREEN/YELLOW/WITHOUT COLOR	T2 RINGS: SEE PAGE 32

KONUS INFINITY MICROSCOPES

This microscope is equipped with infinity objectives in order to deliver the kind of performance that can satisfy even the most demanding users during the most complex laboratory activity. Wavetrains of light leaving the infinity-focused objectives will in fact be collimated, allowing beamsplitters, polarizers, Wollaston prisms and so on to be introduced into the space between the objective and tube lens. The Infinity design also allows the use of larger objectives with better working distance than standard DIN objectives, while also having none of the distortion and aberration problems of traditional microscopes.



◆ BIOREX MICROSCOPE

Great quality optics which supply extraordinary images, very bright and with correct colour.

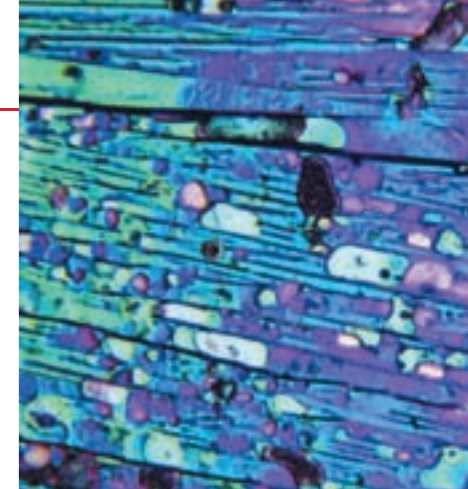
TECHNICAL FEATURES

360°rotatable binocular or trinocular head with dioptic compensation, 45° inclined.
Sturdy and ergonomic stand with full metal construction
The objective holder can be rotated in either direction and features 4 objectives

◆ BIOREX MICROSCOPE

Coarse and fine focus adjustment: coaxial bilateral knob with macro-micrometrical regulations, placed on both sides of the stand.

Clear body N.A. 1.22/0.24 achromatic condenser with numerical aperture of 1.25. It has a light condensation system with double lens and iris diafrgm. Height regulation is done by lateral handle. The filter-holder is placed in the inferior part of the condenser and has a light-blue filter in optical crystal.



CD-ROM INCLUDED
SEE PAGE 41



PHOTOGRAPHIC ACCESSORIES FOR #5601 BIOREX-2	
DIGITAL CAMERA	
#1300 • DIGITAL CAMERA ADAPTER	
REFLEX CAMERA	
#5126 • PHOTO ADAPTER +	
+ #VARIOUS • T2 RING: ACCORDING TO THE CAMERA'S BRAND	
COMPUTER VIDEO	
#5829 • SET COMPUTER VIDEO	



#5601
BIOREX-2
1000X
BIOLOGICAL
BINOCULAR

TECHNICAL FEATURES
SEE PAGE 45

OPTIONAL ACCESSORIES BIOREX MICROSCOPES	
#1300 • DIGITAL CAMERA ADAPTER	#5631 • HALOGEN BULB 6V/15W
#5126 • PHOTO ADAPTER FOR 5601	#5639 • DARK FIELD CONDENSER (DRY)
#5620 • EYEPIECE 15X WF	#5653 • PHOTO ADAPTER WITH PHOTO EYEPIECE (5605)
#5621 • EYEPIECE 20X WF	#5658 • WOODEN BOX WITH KEY
#5625 • FOCUSALBE EYEPIECE WF10X-18 WITH RETICLE	#5829 • SET COMPUTER VIDEO MICROVUE
#5628 • ACHROMATIC OBJECTIVE DIN 20X	T2 RINGS: SEE PAGE 32



#5605
BIOREX-3
1000X
BIOLOGICAL
TRINOCULAR

TECHNICAL FEATURES
SEE PAGE 44-45

OPTIONAL ACCESSORIES
SEE PAGE 44

PHOTOGRAPHIC ACCESSORIES FOR #5605 BIOREX-3	
REFLEX CAMERA	
#5653 • PHOTO ADAPTER + EYEPIECE	
+ #VARIOUS • T2 RING: ACCORDING TO THE CAMERA'S BRAND	
DIGITAL CAMERA	
#5653 • PHOTO ADAPTER + EYEPIECE	
+ #1300 • DIGITAL CAMERA ADAPTER	
COMPUTER VIDEO	
#5653 • PHOTO ADAPTER + EYEPIECE	
+ #5829 • SET COMPUTER VIDEO	

BIG DIMENSIONS STAGE ◆
140x135MM WITH GRADUATED
MOVEMENTS AND COAXIAL
REGULATION;
THE SLIDE CAN
BE MOUNTED IN TWO DIFFERENT
POSITIONS

OPTICAL EQUIPMENT: 2 WIDE FIELD ◆
EYEPIECES WF10X/18MM
AND FOUR ACHROMATIC OBJECTIVES
(4x/0,1, 10x/0,25, 40x
0,65 AND 100x/1,25 IMMERSION)
WITH MAGNIFICATIONS FROM
40x TO 1000x

CONTINUE ON THE FOLLOWING PAGE

◆ **LOW VOLTAGE ILLUMINATOR**
6V/20W WITH CONDENSER
LENS AND LIGHT
INTENSITY
REGULATION WITH
RHEOSTAT

◆ **UNIVERSAL VOLTAGE**
90V/240V
FOR USA AND CE.

◆ **SUPPLIED WITH ANTI-DUST COVER.**

◆ **IN COMPLIANCE WITH CE, UL,**
CSA AND GS REGULATIONS

◆ **INSTRUCTIONS AND PACKAGING**
IN 8 LANGUAGES



CD-ROM INCLUDED
SEE PAGE 41



Offering professional quality at an extremely competitive price, these models have always been our best selling microscopes for students and labs.

TECHNICAL FEATURES:

- Monocular or binocular head according to your needs.
- Full metal stand, classical and ergonomic shape
- 4-Objectives holder, rotatable in both directions
- Optical equipment: Wide field eyepieces 10x and four DIN achromatic objectives 4x, 10x, 40x 100x. Magnifications provided: 40x - 100x - 400x - 1000x. (1500x with optional 15x eyepiece code 5115)

The perfect introductory microscope for every student and science enthusiast, featuring the same optical quality of way more professional instruments.

TECHNICAL FEATURES:

- Monocular head and heavy duty metal stand
- Rotatable objective holder with three objectives
- Optical equipment: wide field eyepiece 15x and three achromatic objectives DIN 4X - 10X - 40XS with magnification power of 60x, 150x and 600x.

♦ **GENEROUS HOLDER FOR SLIDES**
WITH GRADUATED
MOVABLE STAGE
AND COAXIAL HANDLES.

♦ **CLEAR FIELD ABBE CONDENSER**
WITH DOUBLE LENS,
IRIS DIAPHRAGM AND
FILTER-HOLDER.

♦ **ILLUMINATOR WITH**
TRANSMITTED LIGHT AND
LIGHT INTENSITY
REGULATION

♦ **SUPPLIED WITH ANTI-DUST**
COVER AND
4 FILTERS:
ORANGE,
WHITE,
LIGHT BLUE
AND GREEN

♦ **MACRO-AND MICROMETRIC FOCUSING**

♦ **IN COMPLIANCE WITH**
CE, UL, CSA AND
GS REGULATIONS

♦ **INSTRUCTIONS FOR USE AND**
PACKING IN 8 LANGUAGES

♦ **SUPPLIED WITH CD-ROM, SEE**
PAGE 41



PHOTOGRAPHIC ACCESSORIES FOR #5304 ACADEMY	
DIGITAL CAMERA	#1300 • DIGITAL CAMERA ADAPTER
REFLEX CAMERA	#5404 • PHOTO ADAPTER + #VARIOUS • T2 RING: ACCORDING TO THE CAMERA'S BRAND
COMPUTER VIDEO	#5829 • SET COMPUTER VIDEO

#5304
ACADEMY
1000X
BIOLOGICAL
MONOCULAR

#5325
ACADEMY
120V U.S.A.

#5314
ACADEMY
230V U.K.



#5306
CAMPUS
1000X
BIOLOGICAL
BINOCULAR

#5326
CAMPUS
120V U.S.A.

#5316
CAMPUS
230V U.K.

IN THE EQUIPMENT
MICROSCOPY CD-ROM SEE PAGE 41

PHOTOGRAPHIC ACCESSORIES FOR #5306 CAMPUS	
DIGITAL PHOTO	#1300 • DIGITAL CAMERA ADAPTER
FOTO REFLEX	#5126 • PHOTO ADAPTER + #VARIOUS • T2 RING: ACCORDING TO THE CAMERA'S BRAND
COMPUTER VIDEO	#5829 • SET COMPUTER VIDEO

OPTIONAL ACCESSORIES MICROSCOPES CAMPUS/ACADEMY			
#1300 • DIGITAL CAMERA ADAPTER	#5250 • ACHROMATIC OBJECTIVE 4X	#5252 • ACHROMATIC OBJECTIVE 10X	
#5115 • EYEPIECE 15X	#5255 • ACHROMATIC OBJECTIVE 40X	#5258 • ACHROMATIC OBJECTIVE 100X	
#5404 • PHOTO ADAPTER (ONLY FOR #5304)	#5350 • EYEPIECE 10X WITH MICROM. SCALE	#5829 • SET COMPUTER VIDEO MICROVUE	
#5126 • PHOTO ADAPTER (ONLY FOR #5306)			
#5129 • POLARIZATION SET			
#5234 • REPLACEMENT BULB 12V/12W			

T2 RINGS: SEE PAGE 32



#5302
COLLEGE
600X
BIOLOGICAL
MONOCULAR

#5335
ILLUMINATOR
220V WITH
TRANSFORMER
12V/10W

#5051
SET FOR THE
PREPARATION
OF SLIDES

#5327
MOVABLE
STAGE
GRADUATED



♦ **MACRO**
AND
MICROMETRICAL
FOCUSING
KNOBS

♦ **STAGE**
SET FOR
PREPARED SLIDES

♦ **LIGHT CONDENSER**
WITH IRIS DIAPHRAGM AND FILTER
HOLDER

♦ **IN COMPLIANCE WITH CE, UL,**
CSA AND GS REGULATIONS

♦ **SUPPLIED WITH**
ANTI-DUST COVER

♦ **INSTRUCTIONS AND PACKING IN 8**
LANGUAGES

♦ **SUPPLIED WITH CD-ROM**
SEE PAGE 41

#5072
SET 100
COVERS
FOR SLIDES

#5070
SET 50
WHITE
SLIDES

PHOTOGRAPHIC ACCESSORIES FOR #5302 COLLEGE	
DIGITAL PHOTO	#1300 • DIGITAL CAMERA ADAPTER
FOTO REFLEX	#5404 • PHOTO ADAPTER + #VARIOUS • T2 RING: ACCORDING TO THE CAMERA'S BRAND
COMPUTER VIDEO	#5829 • SET COMPUTER VIDEO

OPTIONAL ACCESSORIES COLLEGE	
#1300 • DIGITAL CAMERA ADAPTER	#5349 • EYEPIECE 10X
#5404 • PHOTO ADAPTER	#5350 • EYEPIECE 10X W. MICROMETRIC SCALE
#5327 • MOVABLE STAGE	#5829 • SET COMPUTER VIDEO MICROVUE
#5335 • ILLUMINATOR	T2 RINGS: SEE PAGE 32



#5337
ILLUMINATOR
120V U.S.A.



◆ CRYSTAL-45

The Crystal series includes some very high end units that are an ideal choice for every scientific, research and industrial purpose.

STANDS: The stand of the # 5425 Crystal-45 is of the pillar type and has a 30mm diameter and a 25cm height.

The dimensions of the base are 26x20x6 cm.

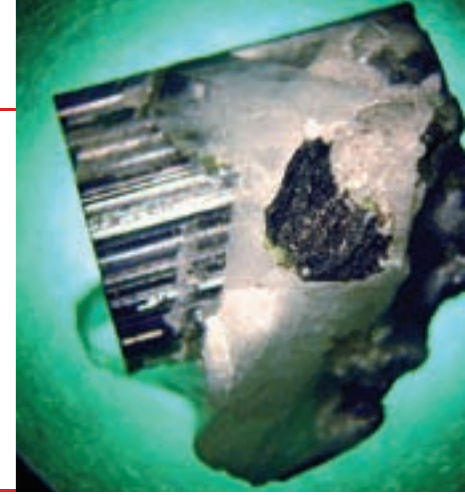
WORKING DISTANCE: For both the Crystal models, the standard working distance is 100mm, but can be extended to 165mm (when the microscope is equipped with optional 20x eyepieces and 0.5x objective) or reduced to 26mm (when the microscope is equipped with 2x objective).

CRYSTAL-PRO ◆

ILLUMINATION: two optional illuminations are available for the # 5424 Crystal-Pro, either with direct light (# 5481) or incidental light (# 5482).

STANDS: The stand of the # 5424 Crystal-Pro can be completely rotated and adjusted in order to fit every possible need. The horizontal bracket is 45 cm, while the vertical one is 42 cm. The base's measurements are 23x23cm.

WORKING DISTANCE: For both the Crystal models, the standard working distance is 100mm, but can be extended to 165mm (when the microscope is equipped with optional 20x eyepieces and 0.5x objective) or reduced to 26mm (when the microscope is equipped with 2x objective).



CD-ROM INCLUDED
SEE PAGE 41

TECHNICAL FEATURES:

360° ROTATABLE TRINOCULAR HEAD, 45° INCLINED ◆

ADJUSTABLE INTER-PUPILLARY DISTANCE FROM 51 TO 75MM. ◆

DIOPTRIC COMPENSATION ON BOTH EYEPIECES ◆

EYEPIECES: EWF 10X/20MM ◆

OBJEC: ACHROMATIC, PARAFOCAL WITH ZOOM POWER 0.7~4.5X ◆

ILLUMINATION: ◆

THE # 5425 CRYSTAL-45 FEATURE TWO ILLUMINATORS FOR TRANSMITTED AND INCIDENTAL LIGHT, BOTH WITH HALOGEN LAMP 12V/15W AND WITH VARIABLE INTENSITY.

#5425 CRYSTAL-45
7X-45X ZOOM
STEREOSCOPICAL
WITH INCIDENTAL AND TRANSMITTED LIGHT



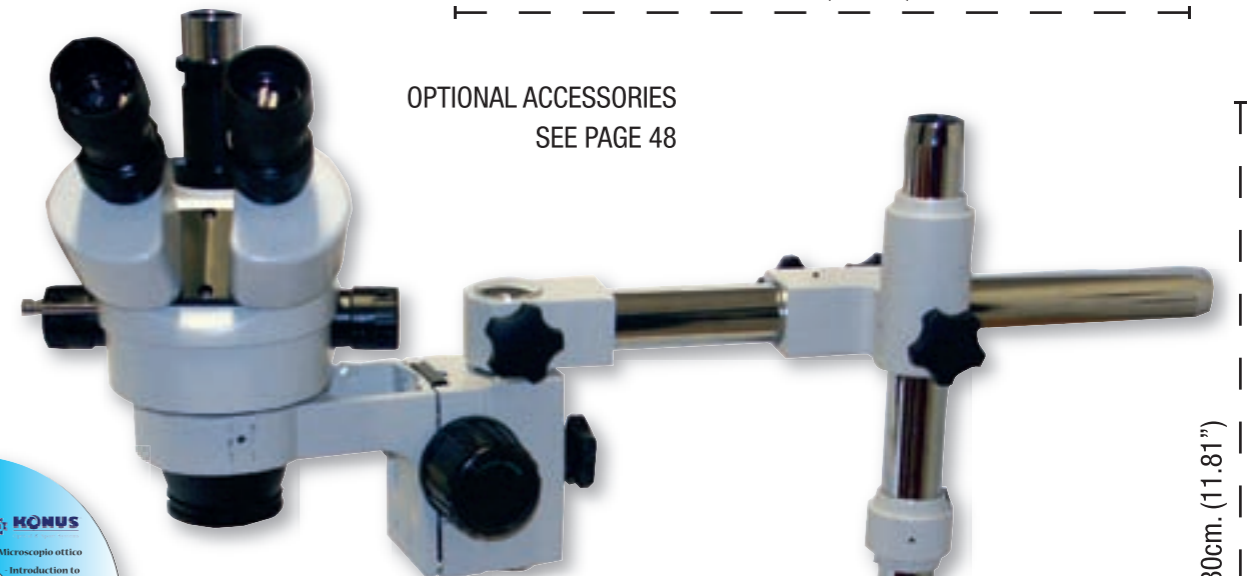
#5426
CRYSTAL-45
120V U.S.A.

PHOTOGRAPHIC ACCESSORIES FOR CRYSTAL MICROSCOPES	
DIGITAL CAMERA	
#5404 • PHOTO ADAPTER + #1300 • DIGITAL CAMERA ADAPTER	
REFLEX CAMERA	
#5404 • PHOTO ADAPTER + #VARIOUS • T2 RING: ACCORDING TO THE CAMERA'S BRAND	
COMPUTER VIDEO	
#5829 • SET COMPUTER VIDEO	

OPTIONAL ACCESSORIES MICROSCOPES CRYSTAL-45 AND CRYSTAL-PRO	
#1300 • DIGITAL CAMERA ADAPTER	#5473 • OBJECTIVE PROTECTIVE LENS
#5402 • AUSILIARY OBJECTIVE 0,5X	#5476 • ANTI-DUST COVER FOR THE HEAD
#5403 • AUSILIARY OBJECTIVE 2X	#5481 • ANULAR ILLUMINATOR DIRECT LIGHT (FOR 5424)
#5404 • PHOTO ADAPTER AND PHOTO EYEPIECE EWH10	#5482 • INCIDENTAL LIGHT ILLUMINATOR (FOR 5424)
#5471 • PAIR OF EYEPIECES 15X	#5829 • SET COMPUTER VIDEO MICROVUE
#5472 • PAIR OF EYEPIECES20X	T2 RINGS: SEE PAGE 32



CD-ROM INCLUDED
SEE PAGE 41



OPTIONAL ACCESSORIES
SEE PAGE 48

MAX LENGTH 55cm. (21.81")

#5424 CRYSTAL-PRO
7X-45X ZOOM
STEREOSCOPICAL

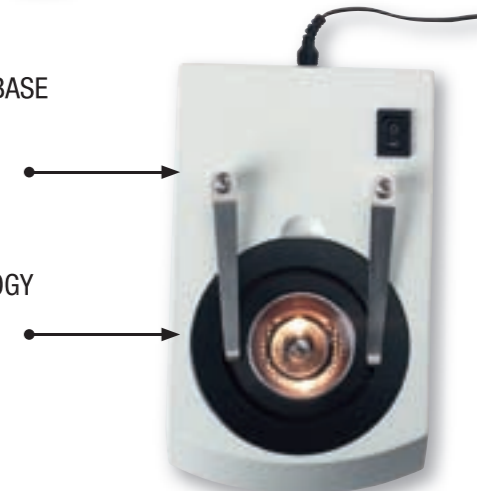
#5482 INCIDENTAL LIGHT ILLUMINATOR
#5484 - 120V U.S.A.

#5481 DIRECT LIGHT RING ILLUMINATOR
#5483 - 120V U.S.A.



#5475 ILLUMINATED BASE FOR #5424

#5138 DARK FIELD FOR GEMMOLOGY



MAX HEIGHT 30cm. (11.81")

ACCESSORIES	WORKING DISTANCE	MAGNIFICATION
WITHOUT ACCESSORIES	100mm	7x-45x
#5472 EYEPIECE 20X	26 mm	14x-90x
#5402 OBJECTIVE 0,5X	165mm	3.5x-22.5x
#5472 AND #5402	165mm	7x-45x
#5403 OBJECTIVE 2X	26mm	14x-90x
WITH #5403 AND #5472	26mm	28x-180x

◆ DIAMOND

This versatile model packs many great features that will prove to be invaluable during the in-depth observation of any specimen, such as its double 20x-40x magnification power and its dual illumination with incidental and transmitted light. Fully made of metal with high precision mechanical construction. 45° inclined binocular head, with adjustable inter-pupillary distance (from 51 to 75mm) and dioptic compensation on the left eyepiece holder.

OPAL-AMBER◆

Two practical and competitive priced microscopes that will let you appreciate the finest details of crystals, minerals, coins, flowers and plants with a three-dimensional vision. Their wide range of optional accessories further enhances their versatility, providing different magnification powers along with the possibility to connect the microscopes to a camera or a computer.



TECHNICAL

FEATURES:

OPTICAL SYSTEM: 2 WIDE FIELD EYEPIECES WF10x/20MM AND 2 OBJECTIVES 2X AND 4X IN THE EQUIPMENT, THUS PROVIDING 20X AND 40X MAGNIFICATIONS THAT CAN BE INCREASED UP TO 30x-60x OR 40x-80x WITH THE OPTIONAL EYEPIECES 15x AND 20x

50

ILLUMINATION: THIS MODEL HAS A DOUBLE ILLUMINATOR FOR INCIDENTAL OR TRANSMITTED LIGHT WITH TWO HALOGEN BULBS 12V/10W.

STAGE: IT IS SUPPLIED WITH A WHITE/BLACK CONTRAST DISC AND A TRANSPARENT DISC

FOCUSING: IT IS DONE WITH A RACK AND PINION SYSTEM WHICH IS OPERATED WITH THE LATERAL KNOBS



CD-ROM INCLUDED
SEE PAGE 41

#5420
DIAMOND
STEREOSCOPICAL
20X-40X ZOOM
WORKING DISTANCE
40MM.

PHOTOGRAPHIC ACCESSORIES FOR DIAMOND AND OPAL	
DIGITAL PHOTO	
#1300 • DIGITAL CAMERA ADAPTER	
REFLEX PHOTO	
#1070 • PHOTO ADAPTER + #VARIOUS • T2 RING: ACCORDING TO THE CAMERA'S BRAND	
COMPUTER VIDEO	
#5829 • SET COMPUTER VIDEO	

#5450
120V-U.S.A.

OPTIONAL ACCESSORIES MICROSCOPES DIAMOND	
#1300 • DIGITAL CAMERA ADAPTER	#5463 • PAIR OF EYEPIECES 15X
#1070 • PHOTO ADAPTER	#5470 • PAIR OF EYEPIECES 5X
#5138 • DARK FIELD FOR GEMMOLOGY	#5476 • ANTI-DUST COVER FOR THE HEAD
#5433 • PAIR OF EYEPIECES 1 20X	#5829 • SET COMPUTER VIDEO MICROVUE

SUPPLIED WITH ANTI-DUST COVER ◆



#5418
OPAL
STEREOSCOPICAL
20X
WORKING DISTANCE 40MM.



CD-ROM INCLUDED
SEE PAGE 41
ONLY WITH OPAL

ACCESSORIES FOR PHOTOGRAPHY FOR OPAL
SEE PREVIOUS PAGE

#5032
AMBER
STEREOSCOPICAL
20X - 32X
WORKING DISTANCE 50MM. AT 20X



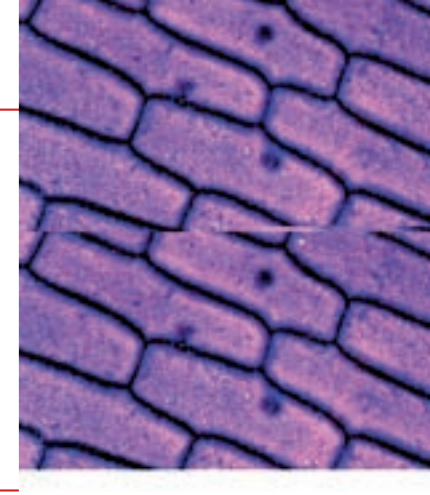
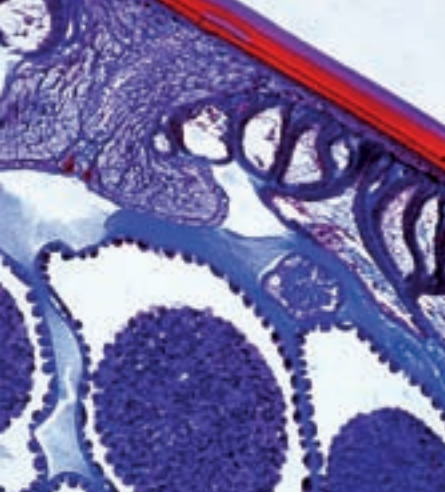
◆ **MOD. OPAL:**
OBJECTIVE 2X - EYEPIECE WF 10x/20MM - MAGNIFICATION 20X UP TO 80X WITH OPTIONAL ACCESSORIES.
ILLUMINATOR: 220V-12V/10W
INCIDENTAL LIGHT
ANTI-DUST COVER
8-LANGUAGES INSTRUCTIONS
CD-ROM MICROSCOPY ENCLOSED

◆ **MOD. AMBER**
OBJECTIVE 2X
EYEPIECES WF 10x-16x
MAGNIFICATIONS 20x AND 32x
ILLUMINATOR WITH 2 "AA" 1.5V BATTERIES INCLUDED
8-LANGUAGES INSTRUCTIONS

OPTIONAL ACCESSORIES MICROSCOPES OPAL - AMBER	
#1300 • DIGITAL CAMERA ADAPTER	#5404 • PHOTO REFLEX ADAPTER (ONLY FOR 5032)
#5115 • EYEPIECE 15X (ONLY FOR 5032)	#5433 • PAIR OF EYEPIECES 20X (ONLY FOR #5418)
#1070 • PHOTO ADAPTER (ONLY FOR 5418)	#5467 • OBJECTIVE 3X (ONLY FOR #5418)
#5240 • PAIR OF RUBBER EYECUPS FOR STEREO EYEPIECE (ONLY 5418)	#5469 • OBJECTIVE 4X (ONLY FOR #5418)
#5349 • EYEPIECE 10X (ONLY FOR 5032)	#5470 • PAIR OF EYEPIECES 5X (ONLY FOR #5418)
#5350 • MICROMETRICAL EYEPIECE 10X (ONLY FOR 5032)	#5482 • INCIDENTAL LIGHT ILLUMINATOR (ONLY FOR 5032)
#5463 • PAIR OF EYEPIECES 15X (ONLY FOR #5418)	#5829 • SET COMPUTER VIDEO MICROVUE
#5465 • OBJECTIVE 1X (ONLY FOR #5418)	T2 RINGS: SEE PAGE 32

51

Developed by a Professor of a renowned University, the "Microcosmo" project provides a terrific opportunity not only for students but for schools as well, since it is loaded with data and information that are so in-depth and thorough that every teacher can use them in his classroom as a modern and innovative approach to the study of Biology, Science and many other subjects. Furthermore, Konus is ready and willing to produce special series of slides according to the customers' requests. Simply let us know the kind of individual program you are looking for and we will put it together for you by combining slides of the finest quality with the most competitive price.



THE PROGRAM

• BIOLOGY

- #4960 - Series for the teaching of science (10 slides)
- #4963 - Series for the teaching of biology (Part I) (10 slides)
- #4964 - Series for the teaching of biology (Part II) (10 slides)
- GENERAL BIOLOGY
- #4976 - General Biology (25 slides)
- #4977 - Zoology, invertebrate and insects (25 slides)
- #4978 - Zoology, vertebrate including mammalia (25 slides)

• BIOLOGY 1

- #4886 - The wonderful structure of vegetable cells (10 slides)
- #4887 - Cell development and reproduction (10 slides)
- #4881 - Plant reproduction and propagation (10 slides)
- #4900 - The wonderful world in a drop of water (10 slides)
- #4950 - The life of the soil (10 slides)

• BIOLOGY 2

- #4986 - Biology, the cell and animal tissues (25 slides)
- #4910 - The human body: normal tissues (10 slides)
- #4911 - The human body: normal tissues (10 slides)
- #4987 - Human body, the structure of organs (25 slides)
- #4914 - The human body: pathological tissues -1 (10 slides)
- #4915 - The human body: pathological tissues 2 (10 slides)

• ZOOLOGY

- #4855 - Fish, Frogs and other Amphibians (10 slides)
- #4856 - Lizards, Snakes and Birds (10 slides)
- #4979 - Zoology, Protozoa (10 slides)
- #4980 - Zoology, Insects (25 slides)
- #4981 - Zoology, Reproduction in invertebrates (15 slides)
- #4862 - Animal reproduction (10 slides)
- #4863 - Animal embryology and development (10 slides)
- #4918 - Human and animal parasites (10 slides)

• BOTANY

- #4877 - Bacteria and simple organisms (10 slides)
- #4982 - Botany, Fungi, Lichens and Briophyta (15 slides)
- #4983 - Botany, Hepaticae, Mosses, Pteridophytae & Gymnosperms (25 slides)
- #4984 - Botany, angiospermae, monocotyledons (Liliopsidae) (25 slides)
- #4985 - Botany, angiospermae, dicotyledons (magnoliopsidae) (25 slides)

• ENVIRONMENT - page 35

- #4880 - Tropical plants (10 slides)
- #4951 - Inhabitants of polluted water (10 slides)
- #4952 - Animals and plants damaged by the environment (10 slides)
- #4935 - Foodstuffs and their adulteration (10 slides)

BIOLOGY:

#4960 SET FOR TEACHING SCIENCE

- (10 SLIDES) 1. Leg of house fly, *Musca domestica* - 2. Bird feather whole mount - 3. Wing scales of butterfly 4. Human blood smear - 5. Intestine of rabbit transversal section - 6. Lung of cat transversal section - 7. Mixed zoological and botanical plankton - 8. Pollen grains of different plants - 9. Foliate leaf with netted venation 10. Large cells, marrow of edelberry.

#4963 SET FOR TEACHING BIOLOGY 1

- (10 SLIDES) 1. Filamentous green alga of freshwater - 2. Mould from bread with mycelium and spore - 3. Sunflower root, transversal section - 4. Privet transversal section of leaf - 5. Tulip transv. section of ovary arrangement ovules - 6. Paramecium ciliates - 7. Earthworm transversal section through midbody - 8. House fly, wing whole mount - 9. Frog, blood smear - 10. Chick, skin of a bird lateral sec. with feathers.

#4964 SET FOR TEACHING BIOLOGY 2

- (10 SLIDES) 1. Bacteria from sour milk smear - 2. Moss, leaves transversal sec. with chloroplasts - 3. Yew, young stems transversal section - 4. Hyacinth, seed transversal section - 5. Euglena green flagellate - 6. Ascaris transversal section through midbody - 7. Honey bee antenna whole mount - 8. Carp transversal section through gills - 9. Liver of rabbit transversal section - 10. Skin of cat lateral section showing cutis.

#4976 GENERAL BIOLOGY (25 SLIDES)

1. Unicellular animal - 2. Paramecium sp. - 3. Hydra sp. - 4. Daphnia sp. - 5. Lumbricus (earthworm) - 6. House fly, mouth parts 7. Honey Bee, mouth parts - 8. Honey Bee, posterior leg - 9. Simple flat epithelium - 10. Skeletal muscle 11. Human blood smear - 12. Frog blood smear - 13. Lung, section - 14. Artery and vein - 15. Human skin, section through hair follicle - 16. Three types of bacteria, smear - 17. Spirogyra coniugation - 18. Volvox - 19. Moss - 20. Mitosis onion root tip cells, section - 21. Monocot + Dicot, roots - 22. Monocot and dicot stems - 23. Tilia one year stem - 24. Tilia three year stem 25. Monocot and dicot leaves

#4977 ZOOLOGY, INVERTEBRATE AND INSECTS

- (25 SLIDES) 1. Unicellular animal 2. Paramecium - 3. Hydra - 4. Hydra spermary - 5. Hydra, ovary - 6. Turbellaria, injected intestinal tube - 7. Ascaris male 8. Ascaris female - 9. Mitosis Horse ascaris eggs 10. Mussel Gill - 11. Daphnia - 12. Mosquito female - 13. Mosquito female mouth parts - 14. Mosquito male mouth parts - 15. Butterfly mouth parts - 16. Honey Bee mouth parts - 17. Testis *Locusta Migratoria* - 18. Insect compound eye - 19. House fly - 20. *Drosophyla* (fruit fly) - 21. Insect digging leg - 22. Insect walking leg 23. Insect swimming leg 24. Insect leaping leg - 25. Insect tale pollen leg

#4978 ZOOLOGY, VERTEBRATE INCLUDING MAMMALIA (25 SLIDES)

1. Frog skin - 2. Frog small intestine - 3. Frog blood smear - 4. Frog, testis- 5. Frog, liver - 6. Frog, heart 7. Rabbit, liver - 8. Rabbit, testis - 9. Rabbit, ovary - 10. Rabbit, spinal cord - 11. Rabbit, motor nerve ending - 12. Compact bone - 13. Wall of stomach (Mammal)

- 14. Small intestine, (Mammal) - 15. Large intestine, (Mammal) - 16. Pancreas (Mammal) - 17. Spleen, (Mammal) - 18. Gall bladder (Mammal) - 19. Lung (Mammal) - 20. Artery and vein (Mammal) - 21. Kidney, (Mammal) - 22. Human sperms, smear - 23. Human skin, sec. through sweat gland - 24. Eyeball (Mammal) - 25. Human chromosomes in blood, male and female

BIOLOGY 1:

#4886 THE WONDERFUL STRUCTURE OF VEGETABLE CELLS (10 SLIDES):

1. Cells with crystals from cactus - 2. Elderberry, *Sambucus*, stem - 3. Mullein, *Verbascum* branched leaf hairs - 4. Glandular cells in rosemary leaf - 5. Sunflower leaf with hairs - 6. Water lily *Nymphaea* stem, stellate hairs. - 7. Dead nettle *Lamium* stem- 8. Potato, *Solanum tuber* - 9. Pollen grains, mixed species - 10. Isolated vessels from plant stem.

4887 CELL DEVELOPMENT AND REPRODUCTION

- (10 SLIDES) 1. Mitotic stages in red bone marrow - 2. Mitotic stages in tests of mouse - 3. Sea-urchin cleavage stage - 4. Growing egg in ovary of bird - 5. Plant mitosis, lateral section of onion root tips. - 6. Plant stages in red bone marrow - 7. Growing tissue in stem apex - 8. Growing leaf tissue in shoot apex - 9. Plant meiosis young *Lilium* anthers. - 10. Mature pollen grains of *Lilium*

#4881 PLANT REPRODUCTION AND PROPAGATION

- (10 SLIDES): 1. Bacteria rod-shaped bacilli in fission - 2. Seaweed, *Focus thallus* - 3. Cornsmut *Ustilago* spore - 4. Pine (*Pinus*), male cone with pollen - 5. Pine pollen grains with air bags - 6. Chive, flower with anthers, ovaries - 7. Lily anthers development of pollen - 8. Tulip (*Tulipa*) ovary with ovules. - 9. Iris transversal section of seed of embryo - 10. Tomato (*Solanum*) young fruit

#4900 THE WONDERFUL WORLD OF A DROP OF WATER (10 SLIDES)

1. Diatoms, many different forms 2. Euglena, green flagellate - 3. Paramecium, ciliates from hay-infusion - 4. Daphnia, water flea - 5. Cyclops, a copepod whole mount - 6. Desmids, mixed (*Desmidiaceae*) - 7. Mixed plankton from fresh water - 8. Hydra transversal section of the body - 9. Planaria transversal sect. of body of a flatworm - 10. Bacteria from putrid water.

#4950 LIFE IN THE GROUND (10 SLIDES):

1. Soil bacteria - 2. Hyphae of root fungi - 3. Fruiting body of mushroom (*Psalliota*). - 4. Horsetail *Equisetum* spores with elateres - 5. Moss leaf, surface view - 6. Needle of pine (*Pinus*) - 7. Venation of a deciduous leaf - 8. Decomposing leaf, formation of humus - 9. Mite from forest soil - 10. Earthworm (*Lumbricus*) transversal section of midbody

BIOLOGY 2:

#4986 BIOLOGY - THE CELL AND ANIMAL TISSUES

- (25 SLIDES): 1. Squamous epithelium amphibian - 2. Stratified squamous epithelium - 3. Cuboidal epithelium - 4. Simple columnar epithelium - 5. Pseudostratified ciliated columnar epithelium - 6. Ciliated epithelium - 7. Transitional epithelium - 8. White fibrous tissue rat tail - 9. Reticular tissue - 10. Adipose tissue - 11.

- Hyaline cartilage - 12. Elastic cartilage - 13. Fiber cartilage - 14. Bone, human - 15. Bone developing, cartilage, joint of finger of foetus - 16. Blood, fish - 17. Blood, sparrow - 18. Blood, human - 19. Striated muscle, teased prep. showing whole fibres, nuclei, fibrillae and striations - 20. Smooth involuntary muscle teased preparation - 21. Heart muscle, teased prep. showing branching cells. striation and intercal. disks - 22. Muscle and tendon lateral section - 23. Nerve cells, section spinal cord, silver impregnation - 24. Nerve transversal and and lateral section hematos and eosine - 25. Motor nerve endings in intercostal muscles, gold impregnation

#4910 THE HUMAN BODY NORMAL TISSUES 1 (10 SLIDES):

1. Human blood smear - 2. Human mouth, epithelial cells - 3. Human striate muscle - 4. Human cerebrum - 5. Human tonsil with lymph nodules - 6. Human lung - 7. Human skin - 8. Human stomach - 9. Human red bone marrow - 10. Human testis

#4911 THE HUMAN BODY NORMAL TISSUES 2 (10 SLIDES):

1. Human skin, section of hairs - 2. Human salivary gland - 3. Human cerebellum - 4. Bacteria from human intestine - 5. Human spermatozoa, smear - 6. Human heart muscle, transversal and lateral sec. - 7. Human bone - 8. Human liver tissue - 9. Human intestinal wall - 10. Human kidney, transv. sec. of a cortical zone.

#4987 THE HUMAN BODY - ORGANS STRUCTURE

- (25 SLIDES): 1. Skin from axillary showing sweat glands, hair follicles - 2. Scalp showing hair follicles and sebaceous glands - 3. Finger nail, transversal section finger through the nail bed - 4. Parotid gland, a purely serous gland - 5. Sublingual gland, a mixed gland - 6. Esophagus and trachea, lateral section of both organs - 7. Gastric wall - 8. Intestine - 9. Appendix - 10. Liver - 11. Liver, pig fibrous trabeculae between lobules - 12. Gall bladder - 13. Pancreas, secretion acini and island of Langerhans - 14. Lung - 15. Aorta, hematoxe & eosine and elastic tissue stain - 16. Artery and vein elastic tissue stain - 17. Kidney, section of cortical zone - 18. Ureter - 19. Urinary bladder - 20. Uterine tube (oviduct), sec. through ampulla - 21. Male gonad, - 22. Spermatozoa smear 23. Prostate - 24. Bone marrow with developing blood cells - 25. Thyroid gland

4914 THE HUMAN BODY PATHOLOGICAL TISSUES

- 1 (10 SLIDES): 1. Tuberculosis of the lung - 2. Cirrhosis of liver - 3. Leukemia of spleen - 4. Sleeping disease, blood smear - 5. Inflammation of the lung. - 6. Malaria, melanemia of spleen - 7. Scar tissue of skin - 8. Eberthella typhi (typhoid fever) - 9. Chronic nephritis - 10. Pus bacteria smear with cocci.

#4915 THE HUMAN BODY PATHOLOGICAL TISSUES

- 2 (10 SLIDES): 1. Millary tuberculosis of liver - 2. Anthracosis of lung - 3. Malaria parasites in blood - 4. Infarct of lung - 5. Cancer of testis - 6. Amyloid degeneration of liver - 7. Influenzal pneumonia. - 8. Struma of thyroid gland. - 9. Chronic inflammation of colon - 10. Metastatic carcinoma of liver.

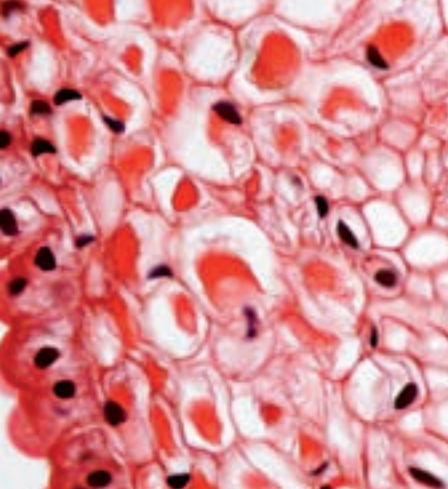
ZOOLOGY:

- #4855 FISHES FROGS AND OTHER AMPHIBIANS (10 SLIDES): 1. Dogfish (*Scyllium*) vertebral column - 2.



A number of series that provide the most comprehensive introduction to the wonders of Zoology, from the simplest unicellular beings to invertebrates like insects and vertebrates like reptiles, birds and mammalians.

Key themes as the animal parasites and the animal reproduction are also covered thoroughly, giving kids and students the chance to enjoy the most interesting and immersive learning experience.



Fresh water fish, region of gills - **3.** Fresh water, region of tails - **4.** Fish scales, various types whole mount - **5.** Tadpole, frog larva, transv. section through body - **6.** Frog (Rana) blood smear - **7.** Frog (Rana), tongue transversal section - **8.** Frog (Rana) intestine - **9.** Frog (Rana) lung - **10.** Salamander skin, transversal section with poison glands

#4856 LIZARDS SNAKES AND BIRD (10 SLIDES): 1. Lizard (Lacerta) lung - **2.** Lizard (Lacerta) kidney - **3.** Adder (Elaphe) muscles of snake - **4.** Adder (Elaphe) stomach - **5.** Goose (Anser), plume feather whole mount - **6.** Duck (Anas) gizzard - **7.** Turkey (Meleagris) wing feather - **8.** Chicken (Gallus) cockscomb - **9.** Chicken (Gallus) ovary - **10.** Chicken (Gallus), blood smear.

#4979 PROTOZOA (10 SLIDES): 1. Paramecium, infusoria ciliated - **2.** Vorticella (Carchesium) - **3.** Plasmodium vivax - **4.** Paramecium stained - **5.** Paramecium, various stages of fission - **6.** Paramecium, various stages of conjugation - **7.** Honey Bee, mouth parts, whole mount - **8.** Protozoa mixed species - **9.** Unicellular animal (Ameba or other) - **10.** Blood smear infected with malaria Plasmodium

#4980 INSECTS (25 SLIDES): 1. Culex common house mosquito female whole mount - **2.** Culex common house mosquito male whole mount - **3.** House fly, whole mount - **4.** Drosophyla, fruit fly, whole mount - **5.** Mosquito heads male and female (sucking type mouse apparatus, whole mount) - **6.** Mosquito male mouth parts whole mount - **7.** Mosquito female mouth parts whole mount - **8.** Butterfly, mouth parts w. mount (lapping type) - **9.** House fly proboscis w. m. (sponging type) - **10.** Honey bee mouth parts whole mount - **11.** Insects digging legs whole mount - **12.** House fly leg, whole mount - **13.** Insects swimming legs whole mount - **14.** Insects leaping legs whole mount - **15.** Insects tale pollen leg - **16.** Cricket wings showing file and scraper w. m. - **17.** House fly wing and halteris whole mount - **18.** Butterfly wing with scales, whole mount - **19.** Antenna types five kinds whole mount - **20.** Insect compound eye whole mount - **21.** Prawn eye lateral sec. through ommatidia w.m. - **22.** Cornea, flat mount to show fawcets w. mount - **23.** Honey bee (Apis mellifica), ovary of the queen - **24.** Insect trachea whole mount - **25.** Malpighian tubes grasshopper whole mount

#4981 REPRODUCTION IN INVERTEBRATES (15 SLIDES): 1. Paramecium, various stages of conjugation - **2.** Hydra with bud whole mount - **3.** Hydra testis whole mount - **4.** Hydra ovary whole mount - **5.** Sheep tenia (Moniezia), whole mount - **6.** Schistosoma japonicum, male and female in copula - **7.** Ascaris transversal section of male in region of sex organs - **8.** Ascaris transversal section of female in region of sex organs - **9.** Ascaris female: uterus with differently developed embryos, whole mount - **10.** Cyclops w.m. with egg sacs - **11.** Honey bee (Apis mellifica), ovary of the queen, whole mount - **12.** Testis of Locusta migratoria, transversal section - **13.** Grasshopper sec. of testis showing mitosis - **14.** Sea urchin developing eggs with divisions, whole mount - **15.** Amphioxus transversal section through male ad female specimens in region of gonads

#4862 ANIMAL EMBRYOLOGY AND DEVELOPMENT (10 SLIDES): 1. Tapeworm of sheep

proglottid - **2.** Honey bee ovaries of queen - **3.** Fish, testes with spermatozoa - **4.** Sperm smear of bull - **5.** Testis of bull spermatogenesis - **6.** Ovary of rabbit ovogenesis - **7.** Fallopian tube of guinea-pig - **8.** Uterus of pig, resting stage - **9.** Uterus of rat with embryo - **10.** Placenta of cat or pig

#4918 ANIMAL AND HUMAN PARASITES (10 SLIDES): 1. Tapeworm (Taenia) transversal section proglottids - **2.** Tapeworm (Taenia) eggs. whole mount - **3.** Trichinella transversal section muscle with larvae - **4.** Trypanosoma in blood smear - **5.** Plasmodium, causes malaria, blood - **6.** Liver of rabbit with coccidiosis transversal section - **7.** Big liver fluke (Fasciola) transversal section - **8.** Schistosoma transv. section of male and female - **9.** Hydatid cyst of Echinococcus transversal sec. - **10.** Roundworm of man and pig Ascaris transv. s.

BOTANY:

#4877 BACTERIA, SIMPLE ORGANISMS (10 SLIDES): 1. Hay bacilli (Bacillus subtilis). - **2.** Milk souring bacteria (Streptococcus Lactis). - **3.** Putrefaction bacteria (Proteus Vulgaris) - **4.** Intestinal bacteria (Escherichia Coli). - **5.** Prayphoid bacteria (Salmonella paratyphi). - **6.** Bacillary dysentery (Shigella dysenterae). - **7.** Pus bacteria (Staphylococcus pyogenes). - **8.** Bacteria from human mouth - **9.** Bacteria from cheese. - **10.** Bacteria from leaven (Salmonella paratyphi).

#4982 BOTANY: FUNGI, LICHENS AND BRIOPHYTA (15 SLIDES): 1. Rhizopus, bread mold, developing sporangia - **2.** Rhizopus nigricans - **3.** Spurred rye spore - **4.** Penicillium - **5.** Penicillium, conidia on conidiophora - **6.** Aspergillus - **7.** Aspergillus, conidia on conidiophores - **8.** Saccaromyces, budding - **9.** Yeast dividing - **10.** Peziza, cup fungus, sec. of apothecium with asci - **11.** Ustilago tritici, loose smut of wheat - **12.** Ustilago zaeae, com smut, section of pustule showing developing chlamydo spores - **13.** Coprinus, sec. showing basidia and spores - **14.** Lichen, sec. vegetative portion of thallus - **15.** Lichen, sec. of apothecium

#4983 BOTANY: HEPATICAE, MOSSES, PTERIDOPHYTAE AND GYMNOSPERMAE (25 SLIDES): 1. Marchantia polymorpha, section of thallus - **2.** Marchantia, section with archegonia - **3.** Marchantia, section with antheridia - **4.** Spore of Equisetum arvense (show elater) - **5.** Moss, lateral section of anteridial cluster - **6.** Microsporangium of Selaginella lateral section - **7.** Moss, protonema whole mount - **8.** Epiphyte fern (Platyserium) - **9.** Fern, section of leaf - **10.** Fern transversal section of rhizome - **11.** Fern protallium of young specimen with antheridia - **12.** Fern protallium of mature specimen with archegonia - **13.** Gemma of Marchantia whole mount - **14.** Archyblast of Chara whole mount - **15.** Ginkgo transversal section of leaf and petiole - **16.** Pinus transversal section of leaf - **17.** Pinus first year stem - **18.** Pinus, mature wood sec rad - **19.** Pinus, mature wood sec tang - **20.** Pinus, sec of young strobilus showing meiosis - **21.** Pinus, median lateral section of male strobilus - **22.** Pinus, tr. s. of male strobilus with microspore - **23.** Pinus, whole mount of pollen grains - **24.** Pinus lateral section of young female cone with bracts and ovules - **25.** Fir tree, leaf tip

#4984 ANGIOSPERMAE, MONOCOTYLEDONS (LILIOPSIDAE) (25 SLIDES): 1. Allium, onion lateral section - **2.** Allium, root tip with mitosis - **3.** Garlic flower with anthers and ovaries - **4.** Lily, leaf - **5.** Lily, pollen - **6.** Lily, anther - **7.** Lily, ovary - **8.** Liliium, transversal section monoc. flower - **9.** Liliium very young anther with sporogenous tissue - **10.** Liliium, style and stigma with pollen grains - **11.** Orchis, transversal section aerial root - **12.** Iris, epidermis w.m. - **13.** Corn, Zea Mays root - **14.** Corn, Zea Mays transv. sect. of young stem - **15.** Corn Zea Mays transversal section stem - **16.** Corn Zea Mays lateral section stem - **17.** Rice transversal section of root - **18.** Rice, transversal section of stem - **19.** Rice, transversal section of leaf - **20.** Triticum wheat transversal section root - **21.** Triticum wheat transversal section of stem - **22.** Triticum wheat transversal section of leaf - **23.** Monoc+dicot leaves - **24.** Monoc+ dicot stems - **25.** Monoc+dicot roots

#4985 ANGIOSPERMAE, DICOTYLEDONS (MAGNOLIOPSIDAE) (25 SLIDES) : 1. Vicia root tip with mitosis - **2.** Pelargonium transversal section young stem - **3.** Pelargonium transversal section of leaf - **4.** Helianthus transversal section mature root - **5.** Helianthus stem - **6.** Cuscuta, dodder on host - **7.** Ficus rubber plant transversal sec. leaf - **8.** Ipomoea sweat potato - **9.** Capsella lateral section embryo with cotyledons - **10.** Capsella section of developed flower - **11.** Ranunculus transversal section young root - **12.** Daucus carota - **13.** Cucurbita, pumpkin - **14.** Cucurbita, pumpkin lateral section - **15.** Cotton leaf - **16.** Ricinus, castor bean - **17.** Pittosporum transvers. sec. of typical dicot leaf - **18.** Miryophyllum transversal sect. of aquatic stem - **19.** Nymphaea, water lily, tran. sec. of aquatic stem - **20.** Solanum, irish potato, transversal section of mature tuber with starch granules - **21.** Tilia one year stem - **22.** Nerium, leaf - **23.** Nicotiana transversal section of leaf - **24.** Salix willow transversal section of stem - **25.** Sambucus elder, bark with lenticels

#4880 TROPICAL PLANTS (10 SLIDES): 1. Epiphytic fern (Platyserium) - **2.** Date palm (Phenix) transversal section through leaflet - **3.** Coconut (Coccus) fibre cells - **4.** Cactus, stem with reduced leaves - **5.** Epiphytic orchid transversal sect. of aerial root - **6.** Louisiana moss, absorbent hairs (Tillandsia) - **7.** Indian rubber tree leaf with crystals - **8.** Coelus, transversal section of a square stem - **9.** Begonia, shadow plant - **10.** Pineapple (Ananas), tropical fruit transv. sec.

ENVIRONMENT: **#4952 ANIMALS AND PLANTS DAMAGED BY THE POLLUTION (10 SLIDES):** 1. Plant parts infested with plant lice transversal section - **2.** Damaged leaves transversal section destroyed epidermis - **3.** Damaged needles of conifers transversal section - **4.** Plant stem, damaged by the game, trans. section - **5.** Wood destroyed by fungus - **6.** Skin of fish transversal sec. injured by chemicals - **7.** Skin ulcer of an amphib transversal section - **8.** Human lung with coal dust transversal section - **9.** Goiter caused by deficiency of iodine - **10.** Gall nut caused by lice transversal section

This innovative and highly advanced article is an electronic microscope with auto-focus technology that enables you to acquire, visualize and store images at 40x magnification power, thus being an invaluable tool for many professional applications in the field of industry, dentistry, research and science.

It comes complete with illuminator, power source and USB plug. Due to its reduced weight and dimensions, it can be handily carried in your pocket. It is also extremely user-friendly and easy to operate: just plug it into your computer and the installation will automatically take place with Windows XP, and Vista.



40X MICROSCOPE

#5820 SET MICRO-EYE
1.3MB COLOR
40X
USB PLUG
WITH LIGHT

- ◆ 40x POWER
- ◆ 65MM X 15MM DIMENSIONS



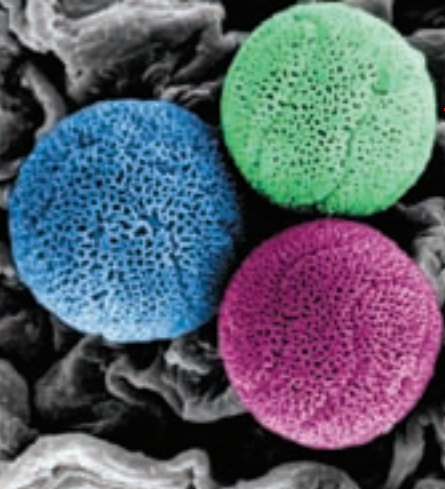
40x

- ◆ IMAGES ARE DISPLAYED WITH VGA 1280x1024 AT 15 FPS
- ◆ VGA 640x480 AT 30 FPS
- ◆ ILLUMINATOR WITH 4 LED LIGHT AND VARIABLE INTENSITY

WITH LIGHT



- ◆ SENSOR WITH 1.3MP RESOLUTION
- ◆ AUTOMATIC INSTALLATION FOR WINDOWS XP/7 AND VISTA.
- ◆ FOR OTHER SYSTEMS, OPTIONAL DRIVER AVAILABLE UPON REQUEST.



◆ COMPUTER SET MICROVUE

This video set enables the connection between a microscope (either biological or stereoscopic) and a Computer, since it fits in the eyepiece holder (an adapter may be needed as shown below).

Then the USB cable and software will let you acquire and store images while using the magnification power of the microscope.

KONUSPIX - AMBER◆

This model combines the design and the functional efficiency of a high technology unit. It is a digital microscope that can be connected to a PC with a USB cable for image capturing, customization, recording and printing. It also works as a webcam and a digital camera, thus becoming an incomparable tool to discover and explore the invisible. Finally its dual illumination system provides a versatility which is unprecedented in the market. You can in fact use this model as a stereoscopic microscope if you couple the incidental light with low magnification powers, while you can use it as a biological microscope if you couple the transmitted light with high magnification powers.



COMPUTER VIDEO SET FOR BIOLOGICAL AND STEREOSCOPICAL MICROSCOPES



CD WITH NEW AUTO INSTALLING SOFTWARE

THE SET INCLUDES ◆

- DIGITAL CAMERA WITH 1.3 CMOS SENSOR
- TWO ADAPTERS FOR STEREO MICROSCOPES
- USB CABLE

INSTRUCTION IN 11 LANGUAGES: ONCE THE SOFTWARE IS INSTALLED, CLICK "HELP" AND YOU WILL ACCESS ADDITIONAL INSTRUCTIONS IN ENGLISH

TECHNICAL FEATURES

IMAGE SENSOR: 1.3MB, 1/2" CMOS COLOR
MAX RESOLUTION: 1280x1008

FIELD OF VIEW: 18MM.

SENSIVITY: 2.7v/LUX.SEC@GREEN - 2.1 v/LUX.SEC@RED - 2.0v/LUX.SEC@BLUE

FILE FORMAT: BMP, TIFF, JPG, PICT, PTL

EXPOSURE: AUTOMATIC

SHUTTER CONTROL: AUTOMATIC

INTERFACE: USB SYSTEM

REQUIREMENTS:

WINDOWS 2000/XP/7 OR VISTA



STEREO MICROSCOPES ADAPTERS



ELECTRONIC EYEPIECE



#5829
SET MICROVUE
1.3 MB
COLOR

*COMPUTER AND MICROSCOPE NOT INCLUDED



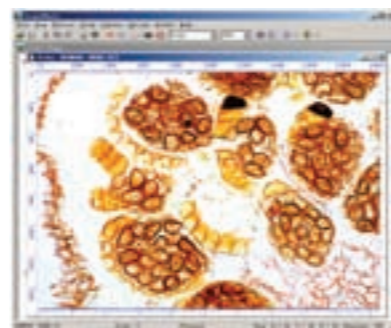
SPECIFICATIONS OF THE INCLUDED SOFTWARES:

SCOPEPHOTO is a software that provides the following functions:

- Capture images through Twain interface
- Store the captured images
- Copy and paste images
- Measure the images
- Improve the visual quality of the images
- Enlarge or reduce the image size

AM/CAP is a software that provides full control of the camera and allows you to watch in real-time the images and videos that have been acquired through the microscope

MINISEE is a software that lets you import, customize and organize the various images that have been acquired.



* NOTEBOOK NOT INCLUDED

#5023
KONUSPIX
100X-200X-450X
BIOLOGICAL AND STEREOSCOPICAL MICROSCOPE WITH WEB-CAM, CD WITH SOFTWARE

◆ DIGITAL CAMERA (640x480 PIXELS)

◆ WEB-CAM

◆ PC-LINK

◆ CD WITH SOFTWARE

◆ SOFTWARE FOR WINDOWS XP AND VISTA/7

#5032
AMBER
STEREOSCOPICAL 20X - 32X
WORKING DISTANCE 50MM. AT 20X

OPTIONAL ACCESSORIES
SEE PAGE 51



◆ LED ILLUMINATOR INCIDENTAL LIGHT

◆ 2 PAIRS OF WF10X AND 16X EYEPIECES

◆ 2x-OBJECTIVE

◆ 20X AND 32X MAGNIFICATION

◆ FUNCTIONS WITH TWO AA 1.5V BATTERIES (INCLUDED)

◆ KONUSCIENCE

Tailor-made for educational entertainment, the Konus didactical microscopes are the perfect gift for the scientists of tomorrow.

Their metal body, optical glass lenses and multiple accessories provide a terrific value which will translate into countless hours of fun and learning for kids and students.

KONUSTUDY-3 KONUSFIRST ◆

Tailor-made for educational entertainment, the Konus didactical microscopes are the perfect gift for the scientists of tomorrow.

Their robust construction, optical glass lenses and multiple accessories provide a terrific value which will translate into countless hours of fun and learning for kids and students.



#5020
KONUSCIENCE
1200X
BIOLOGICAL
WITH 3-WAYS VIEWER



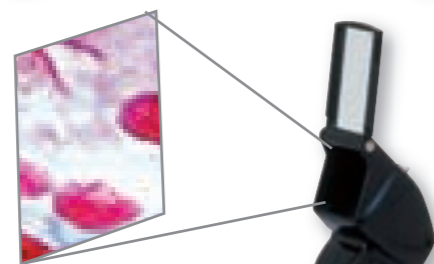
#5019
KONUSTUDY-3
100X-1200X
BIOLOGICAL



#5015
KONUSFIRST
600X
BIOLOGICAL
WITH 3-WAYS VIEWER

58

LENSES IN OPTICAL GLASS ◆



PAPER PROJECTOR

VIEWER



WALL PROJECTOR



BATTERY OPERATED ILLUMINATOR ◆

(BATTERIES NOT INCLUDED)

PLASTIC CASE AND HUGE

ASSORTMENT OF ACCESSORIES

59

◆ LENSES IN OPTICAL GLASS

◆ BATTERY OPERATED ILLUMINATOR
(BATTERIES NOT INCLUDED)

◆ PACKING AND INSTRUCTIONS
IN 8 LANGUAGES

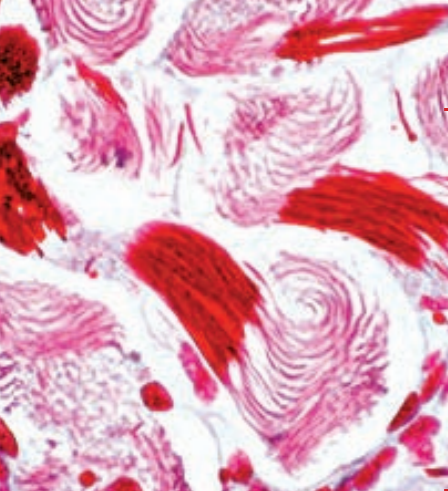
◆ HUGE ASSORTMENT OF ACCESSORIES

◆ PLASTIC CASE
(MODEL 5019 ONLY)



◆ COLLEGE

The monocular microscope is ideal for the first observations. Supplied with eyepiece and three superior din achromatic, interchangeable objectives which give up to a maximum of 600x magnification. Instructions in 8 languages.



SURGICAL MICRO TOPAZ ◆

An highly professional microscope with binocular shape that is useful whenever the maximum precision is needed and there is no room for error, something that makes it an ideal tool for surgical, dental and industrial purposes. Its optics are built with the Prismatic system that provides an advantage in terms of higher magnification power and better in-depth stereoscopic view.



MONOCULAR HEAD AND HEAVY ◆

DUTY METAL STAND

ROTATABLE OBJECTIVE HOLDER ◆

WITH THREE OBJECTIVES

OPTICAL EQUIPMENT: WIDE FIELD ◆

EYEPIECE 15X AND 3 ACHROMATIC OBJECTIVES DIN 4X - 10X - 40XS WITH MAGNIFICATION POWER OF 60x, 150x AND 600x.

MACRO AND ◆

MICROMETRICAL FOCUSING KNOBS

STAGE SET FOR ◆

PREPARED SLIDES

LIGHT CONDENSER ◆

WITH IRIS DIAPHRAGM AND FILTER HOLDER

CE, UL, CSA AND GS REGULATIONS ◆

SUPPLIED WITH ANTI-DUST COVER ◆

SUPPLIED WITH CD-ROM ◆

SEE PAGE 41

#5302
COLLEGE
600X
BIOLOGICAL
MONOCULAR



IN THE EQUIPMENT
MICROSCOPY CD-ROM SEE
PAGE 41

PHOTOGRAPHIC ACCESSORIES FOR #5302 COLLEGE	
DIGITAL PHOTO	
#1300 • DIGITAL CAMERA ADAPTER	
FOTO REFLEX	
#5404 • PHOTO ADAPTER +	
#VARIOUS • T2 RING: ACCORDING TO THE CAMERA'S BRAND	
COMPUTER VIDEO	
#5829 • SET COMPUTER VIDEO	

OPTIONAL ACCESSORIES COLLEGE	
#1300 • DIGITAL CAMERA ADAPTER	#5349 • EYEPIECE 10X
#5404 • PHOTO ADAPTER	#5350 • EYEPIECE 10X W. MICROMETRIC SCALE
#5327 • MOVABLE STAGE	#5829 • SET COMPUTER VIDEO MICROVUE
#5335 • ILLUMINATOR	T2 RINGS: SEE PAGE 32



CODE • 5520
MAGNIFICATION: 3.5X
WORKING DISTANCE: 400mm.
FIELD OF VIEW: 86mm

#5520
TOPAZ PRISMATIC
3.5X 400 MM FOCAL
FIELD OF VIEW MM. 86
MICROSCOPE-BINOCULAR
WITH HEADBAND

- ◆ HIGHEST COMFORT FOR THE VIEWER BECAUSE OF THE SPECIAL HEADBAND SET
- ◆ NEVER-BEFORE-SEEN PRICE, COUPLED WITH THE FASTEST LEAD TIME IN THE INDUSTRY
- ◆ IMPECCABLE QUALITY AND MAXIMUM PERFORMANCE
- ◆ 3.5X MAGNIFICATION POWER AND 400MM WORKING DISTANCE

◆ FLEXO MAGNIFIERS

The new Flexo-90 is extremely practical, lightweight and easy to operate. It features a large 90mm diameter along with a 2.5x power and a generous working distance. It also includes a LED light.

It is important to note that the Flexo-130 magnifier is complete with a belt and a neck lace to using it as a sewing magnifier and with a screw-set to fix it at the wall.

LUX MAGNIFIER◆

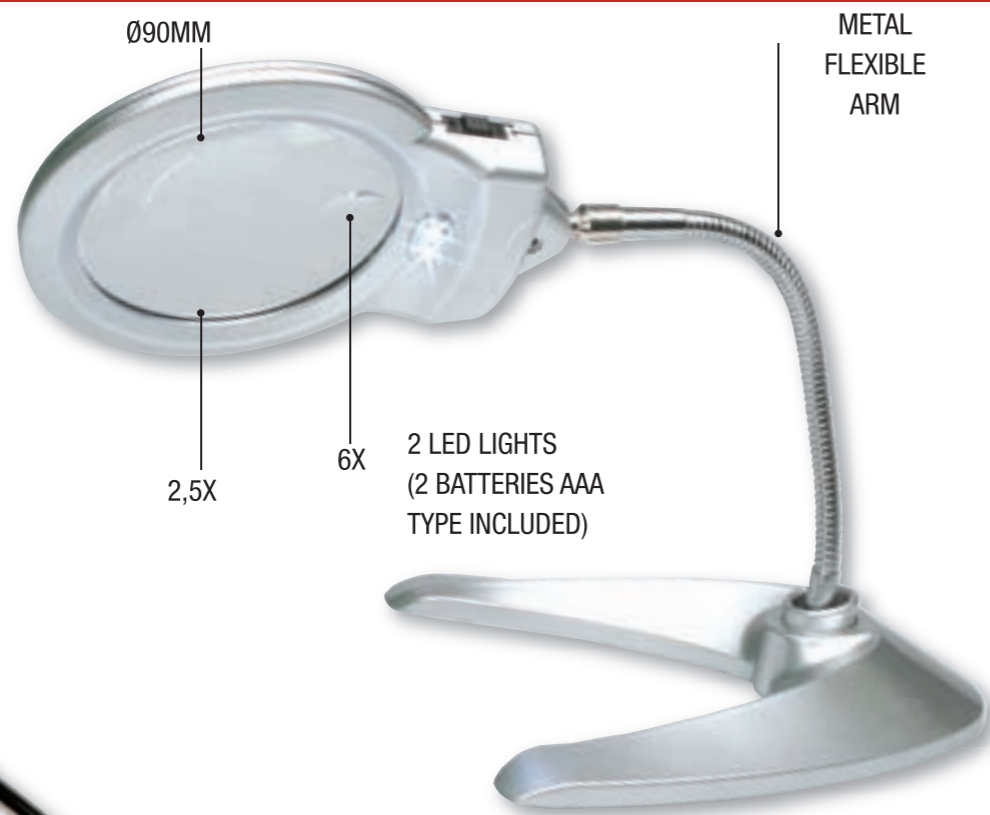
Three magnifiers with built-in light in order to see even the smallest details.

The #3376 is sold in sets of 12 units and provides a double magnification power (2.5x-5x).

The #3379 with double LED illumination is a very smart model, lightweight and with a large diameter.

The #3627 is a very eclectic magnifier as you can use it as table magnifier or hand magnifier as its base is folded into the handle.

#3624
FLEXO-90
Ø90mm. (3.51")
2.5X-6X
WITH TABLETOP BASE



LED LIGHT
(2 AAA BATTERIES
INCLUDED)

#3626
FLEXO-130
Ø130mm. (5.11")
2X
WITH TABLETOP
BASE



COMPLETE WITH ACCESSORIES
FOR USING IT AS A SEWING MAGNIFIER OR
FOR FIXING IT TO
THE WALL

#3627
FLEXO-DUAL
Ø90mm.(3.5")
2x-4x BIFOCAL
FLEXIBLE MAGNIFIER DOUBLE USE
HAND OR TABLETOP MAGNIFIER



LED LIGHT
(2 BATTERIES AA
INCLUDED)



SUPPLIED
WITHOUT
BATTERIES

#3379
LUX-90
Ø90mm. (3.5")
2.5X
LED ILLUMINATION
3 LR1130 BATTERIES INCLUDED



#3376
LUX-50
SET 12 UDS.
Ø50mm. (1.9") - 2.5X-5X BIFOCAL



◆ LUX POCKET MAGNIFIER

A pocket magnifier is always very useful: for reading, for traveling, for seeing hidden particulars which require magnification but also lighting even in the night.

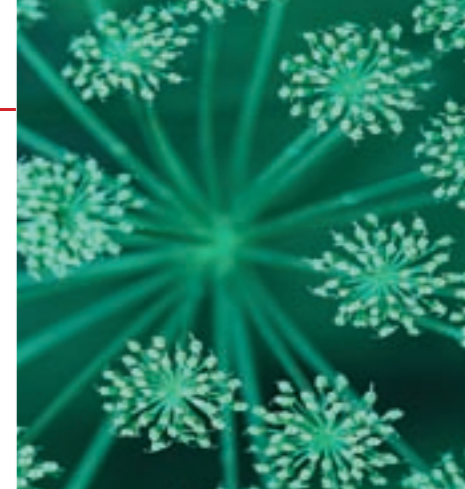
3381 and 3382 models are more compact while 3374 model is bigger and instead of the fast opening has a soft case.



◆ LINEN TESTERS ◆

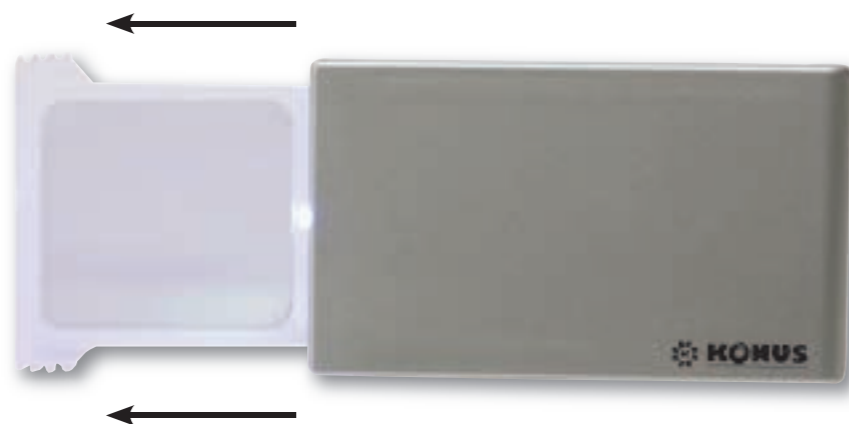
Linen-testers are an invaluable tool that can be used every time a high-precision workmanship and craftsmanship is needed, for example in the textile industry, in the printing industry or in the industry of micro-mechanics.

Our extensive range includes several models with different magnification powers, available with foldable, sprung and "jack-knife" construction. Our assortment of linen testers is very broad and complete, including some special models like the # 3057 which features a sprung construction along with a LED illumination with battery included.



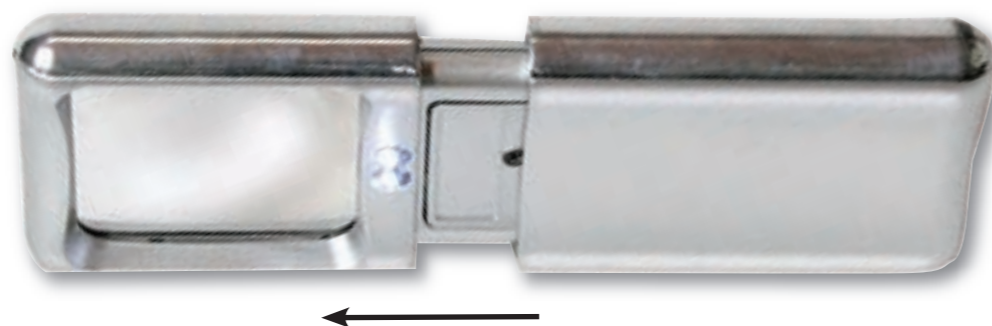
#3382 CARDLENS

KIT 6 PCS.
2X - 9.5x5.5cm (3.7"x2.1")
FAST OPENING
WITH LED LIGHT
2 2025 BATTERIES
INCLUDED



#3381 LEDLUX

KIT 6 PCS
3X - 9.5x5.5cm (3.7"x2.1")
FAST OPENING
WITH LED LIGHT
2 AG10 BATTERIES
INCLUDED



#3374 TRILED

2X - 14.5x5.8cm
(5.7"x2.2")
WITH 3 LED LIGHTS
2 LITHIUM BATTERIES
CR2016 INCLUDED
CASE INCLUDED



#3056
55x50mm - 6X - WITH MEASUREMENT
SCREW WITHOUT END MEASUREMENT
LED ILLUMINATION - 2 CR1216 LITHIUM
BATTERIES INCLUDED - CASE INCLUDED



#3057
SET 4 PCS.- 25x30mm (1x1.2") - 5X
SPRUNG CONSTRUCTION
LED ILLUMINATION - 2 LR927
BATTERIES INCLUDED - ABS BODY



#3045
SET 4 PCS.
30x30 mm (1.2x1.2")
6x
METAL BODY



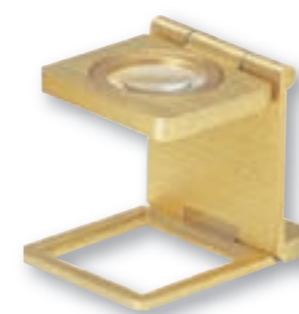
#3046
SET 4 PCS - 25x25mm
(1x1") - 7x - METAL BODY
APLANATIC LENS



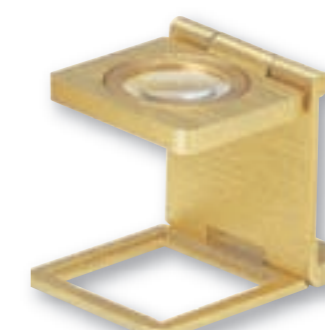
#3047
SET 4 PCS - 20x20mm
(0.8x0.8") - 8x - METAL BODY
APLANATIC LENS



#3048
SET 4 PCS - 15x15mm
(0.6x0.6") - 10x - METAL BODY
APLANATIC LENS



#3051
SET 4 PCS - 15x15mm
(0.6x0.6") - 10x - METAL BODY



#3052
SET 4 PCS - 20x20mm
(0.8x0.8") - 8x - METAL BODY



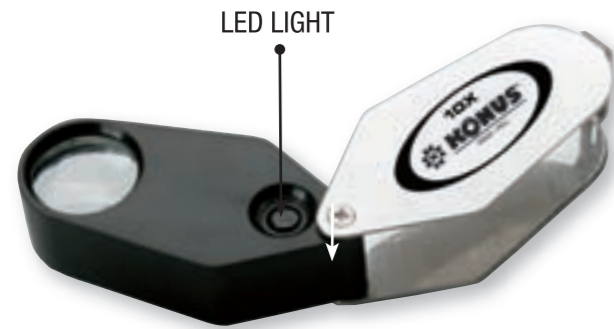
#3053
SET 4 PCS - 25x25mm
(1x1") - 7x - METAL BODY

◆ LINEN-TESTERS AND LENSES

These linen-testers are with “jack-knife” construction and one model also features the illumination with LED light as an added bonus.

The #3239 is a pocket-sized foldable magnifier that is offered in a 12 pcs set at a price that can't be beat.

The 50x-80x microscope is a versatile and useful instrument with the magnifying power of a traditional microscope in a convenient pocket sized unit.



#3025
SET 6 PCS - 10X
LINEN TESTER WITH LIGHT
LED LIGHT (2 LR1130 BATTERIES
INCLUDED)



#3021
SET 6 PCS - 10x-20x
LINEN TESTER DUAL LENS
WITH DUAL LENS



#3706
POCKET
MICROSCOPE
50X-80X
WITH LED LIGHT
INCIDENTAL OR DIRECT
ILLUMINATION (2 AA
BATTERIES INCLUDED)
DIMENSIONS
4X144cm (1.5x5.5")



#3239
QUICKLENS
SET 12 PCS.
Ø40mm
5x



#3023
K-LUX
SET 6 PCS. - 10X
LED ILLUMINATION
2 LR1130 BATTERIES INCLUDED

AURUS MAGNIFIERS ◆

In a market flooded with poor quality items, these magnifiers distinguish themselves with their classy design and their superior materials including ultra-white glass, golden metal mount and wooden grip.

Available in different sizes in order to meet any requirement.



Ø50mm. (2")
3.5x



Ø60mm. (2.4")
3x



Ø70mm. (2.8")
2.5x



Ø80mm. (3.2")
2x



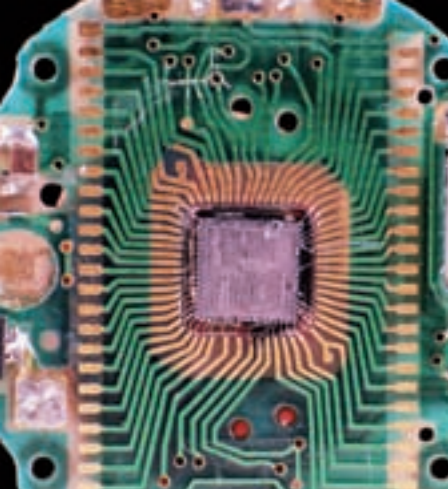
#3110
AURUS-MIX
SET 12 PCS.
3 pcs. Ø50mm (2")
3 pcs. Ø60mm (2.4")
3 pcs. Ø70mm (2.8")
3 pcs. Ø80mm (3.2")

◆ ULTRA-WHITE OPTICAL GLASS

◆ AUTHENTIC REDWOOD GRIP

◆ AVAILABLE WITH DIFFERENT
DIAMETERS AND MAGNIFYING POWERS

◆ GOLDEN METAL FRAME



◆ SILVER MAGNIFIER

A new and sophisticated version of our high quality magnifiers, with silver metal frame, brown wooden grip and ultra-white optical glass.

Available in different sizes from 50mm (2") to 80mm (3.2").



Ø50mm. (2")
3.5x



Ø60mm. (2.4")
3x



Ø70mm. (2.8")
2.5x



Ø80mm. (3.2")
2x

#3125 SILVER-MIX

SET 12 PCS.

- 3 pcs. Ø50mm (2")
- 3 pcs. Ø60mm (2.4")
- 3 pcs. Ø70mm (2.8")
- 3 pcs. Ø80mm (3.2")

ULTRA-WHITE OPTICAL GLASS ◆

AUTHENTIC REDWOOD GRIP ◆

AVAILABLE WITH DIFFERENT ◆

DIAMETERS AND MAGNIFYING POWERS

SILVER METAL FRAME ◆

DIGITAL METEO STATIONS ◆

The weather has a direct impact on our daily activities and, all too often, our mood. If you can forecast the weather, you can plan your family's whole day, from your schedule down to your outfits; you can plan your journeys more effectively and even organise your gardening work. Weather forecasting involves measuring atmospheric pressure and analysing its changes over time and these weather stations are therefore built with the most accurate and reliable sensors.

BEING RADIO-CONTROLLED, THESE PRODUCTS CAN ONLY BE USED IN EUROPE.



#7051

WHS-7051

- FORECAST DISPLAY BY ANIMATED ICONS
- ATMOSPHERIC PRESSURE AND ALTITUDE DISPLAY
- BAROMETRIC TENDENCY
- STORM ALERT
- MEASUREMENT OF THE ATMOSPHERIC PRESSURE
- ATMOSPHERIC PRESSURE HISTOGRAM
- THERMO-HIGROMETER WITH MAX-MIN
- TEMPERATURE AND HYGROMETRY MONITORING
- MOON PHASES DISPLAY
- AUTOSCROLL: AUTOMATIC SCROLLING OF DATA
- RADIO-CONTROLLED CLOCK AND CALENDAR
- ALARM
- FUNCTIONS WITH 3 AA BATTERIES (INCLUDED)

#6051

WHS-6051

- FORECAST DISPLAY BY ANIMATED ICONS
- BAROMETRIC TENDENCY
- STORM ALERT
- THERMO-HIGROMETER WITH MAX-MIN
- TEMPERATURE AND HYGROMETRY MONITORING
- MOON PHASES DISPLAY
- AUTOSCROLL: AUTOMATIC SCROLLING OF DATA
- RADIO-CONTROLLED CLOCK AND CALENDAR
- ALARM
- FUNCTIONS WITH 2 AA BATTERIES (INCLUDED)



◆ HIGH TECHNOLOGY AND RELIABILITY

◆ MODERN AND CAPTIVATING DESIGN

◆ EVERY UNIT CAN KEEP UNDER CONTROL AS MUCH AS 4 DIFFERENT ROOMS

◆ RADIO-CONTROLLED FOR UTMOST PRECISION

◆ DIGITAL METEO STATIONS

The Konus new digital stations are characterized by perfect legibility of the display. All information is clear and immediately visible to exploit the full potential of these tools with ease.

Both models can be hung on a wall or placed on the table at your leisure.

The model 6182 is characterized by a white frame with polished elegance that will furnish your wall or desk.

◆ METEO MIX STATIONS

Three interesting articles with terrific price that are guaranteed to meet the taste of your customers.

Two of them are weather stations with Barometer, Hygrometer and Thermometer in C° and F°, while the fourth model is a tabletop clock with thermometer that makes for a great idea for gift and premium.

Model #6369 is an inexpensive version that still makes for a great value because of its functions and appearance

Model 6184 is sun powered to save energy.

#6182

METEOSTAT

- WEATHER FORECAST CLOCK
- 12/24 HOUR SELECTABLE
- MONTH, DATE AND DAY SDISPLAY
- ALARM FUNCTION, 5 MINUTE SNOOZE FUNCTION
- CALENDAR RANGE: 2003 ~ 2052
- °C/°F SELECTABLE
- TEMPERATURE RANGE 0°C ~ 50°C (32°F~122°F)
- HUMIDITY RANGE 20~90%RH
- MAX/MIN INDOOR TEMPERATURE/HUMIDITY RECORD
- ILLUMINATION
- DIMENSIONS B19xH13.5cm (7.4x5.3")



#6369

INDOOR

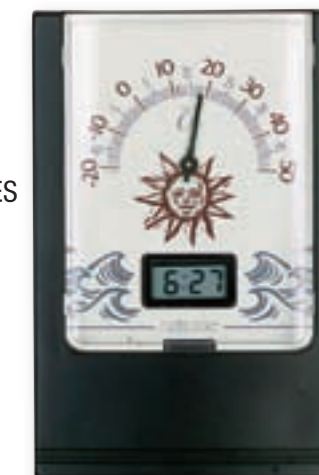
- KIT 3 PCS.
- THERMOMETER: (°C -20° +50°)
- QUARTZ CLOCK
- HYGROMETER
- WORKS WITH TWO BATTERIES 1,5V (NOT INCLUDED)
- DIMENSIONS: 7X10.5CM (2.7"X4.1")



#6129

INDOOR

- KIT 8 PCS.
- TABLE CLOCK
- WORKS WITH TWO BATTERIES (NOT INCLUDED).
- THERMOMETER: (°C -30° +50° °F -20° +120°)
- DIMENSIONS 7X10.5 CM (2.7"X4.1)



#6188

METEOWHEEL

- YEAR RANGE IS 2000-2099
- 12/24 HOUR SELECTABLE
- ALARM/SNOOZE FUNCTION
- INDOOR TEMPERATURE RANGE 0°C ~ 50°C (32°F~122°F)
- HUMIDITY RANGE 20%~90%
- MAX/MIN TEMPERATURE/HUMIDITY RECORDSU UPDATE, AUTOMATICALLY CLEAR RECORD FUNCTION
- WEATHER ICONS FOR THREE STATES: SUNNY CLOUDY-RAINY
- DIMENSION Ø16CM (6.2")
- FUNCTIONS WITH 2 X AA BATTERIES INCLUDED



YOU CAN ALSO HANG THEM TO THE WALL

REDUCED DIMENSIONS AND FANCY DESIGN

VERY USEFUL AT HOME AND OFFICE

YOU CAN USE AS ALARM CLOCK

#6184

MYMETEO

- WEATHER FORECAST FOR 4 STATES
- TEMPERATURE °C/°F SELECTABLE
- 12/24 HOUR SELECTABLE
- INDICATION OF THE COMFORT INDEX
- CALENDAR INDICATION
- THE FUNCTION OF ALARM/SNOOZE
- LED LIGHT
- SOLAR FUNCTION
- DIMENSIONS B8xH13cm (3.1x5.1")
- 2 X AAA BATTERIES INCLUDED



SUN POWER

◆ ORIGINAL AND INNOVATIVE DESIGN

◆ LOW BATTERY CONSUMPTION

◆ HIGHLY COMPETITIVE PRICE FOR ENHANCED SELLING POTENTIAL

◆ GREAT PROMOTIONAL ITEMS

◆ METEO STATIONS WALL-SET

These weather stations combine flawless accuracy with the most classical design, thus making for a great piece of furniture for both home and office.

Model #6377 is manufactured in ITALY and exquisitely made of wood.

Model #6374 is manufactured in Germany and therefore very precise.

EXTERNAL METEO STATIONS ◆

Two instruments to monitor temperature changes with ease and immediacy.

The digital station is equipped with a legible while mod. 6221 is traditional and to measure the relative humidity in order to monitor the status of an environment of comfort or a day.

The relative humidity of welfare in situations ranging from 35% to 65% and should never be exceeded 50%, with temperatures above 26 °C. (78.8°F)



#6377 AZZURRO-2

- THERMOMETER:
(C° -30° +70 / F° -20 +160)
- BAROMETER: (MM. BAR/H.PASCAL)
- DIMENSIONS: 20X32.5 CM
(7.9"X12.8")



#6374 METEO-PLUS

- HIGROMETER
- BAROMETER (MM.BAR/H.PASCAL)
- THERMOMETER
- DIMENSIONS: 27X11CM - 10.6X4.3"

MODEL #6377 IS FULLY MADE
IN ITALY, MODEL #6374
IS MADE IN GERMANY

EXCLUSIVE ITALIAN DESIGN ◆

EXTREMELY PRACTICAL AND EASY
TO OPERATE WITH NO
MAINTENANCE NEEDED

#6178 MIN-MAX THERMOMETER

- ELECTRONIC THERMOMETER
- MIN-MAX RECORDS
- BATTERY INCLUDED
- DIMENSIONS: 6.5X13.5CM (2.6X5.4")
- FUNCTIONS WITH 1X AAA BATTERY



#6221 THERMO

- OUTER TERMO-HIGROMETER
- °C OR °F THERMOMETER
- MAX OR MIN TEMPERATURE
- HUMIDITY RANGE FROM 20% TO 100%
- DIMENSIONS: 25X11CM - 9.8X4.3"

◆ WEATHERPROOF

◆ MAXIMUM AND MINIMUM
INDICATION

◆ PERFECT IN OUTDOOR PLACES

◆ CLASSIC THERMOMETERS

Thermometers of the most varied forms and styles to solve the measurement of temperature in various environments: models with traditional staircase Celsius. These thermometers are instruments always current and always in demand by customers which do not affect high-tech tools to read and vice versa, but that make for efficient and specific tools. In particular we wish to draw two thermometers in the code. 6201 and 6226: two items first price in high demand.

TRADITIONAL THERMOS ◆

Model #6391 is manufactured in Germany and therefore very precise. The #6208 is a spectacular assortment of thermometers with 4 artistic designs and 4 different colors.



#6201

- SET 10 PCS.
- MADE OF WOOD
- THERMOMETER: (°C -20° +50°)
- DIMENSIONS: 6.5X22 CM (3.8"X10.4")



#6226

- THERMO-4**
- SET 10 PCS.
- WOODEN THERMOMETER
- THERMOMETER: (°C -15°+50°)
- LENGTH: 20 CM (7.7")



#6225

- THERMO-3**
- WHITE PLASTIC THERMOMETER
- THERMOMETER: (°C -50°+50°)
- LENGTH: 39.7 CM (15.6")
- INDOOR OR OUTDOOR THERMO



#6224

- THERMO-2**
- SET 10 PCS
- THERMOMETER IN SILVER COLOUR
- THERMOMETER: (°C -5°+50°)
- LENGTH: 19.3 CM (7.5")



#6222

- THERMO-1**
- SET 10 PCS.
- PLASTIC AND WOODEN THERMOMETER
- THERMOMETER: (°C -20°+50°)
- LENGTH: 20 CM (7.7")



VERY PRACTICAL ◆

EASY TO USE AND ◆

TO READ

NO NEED BATTERIES ◆



#6208

THERMO CLASSIC

- SET 4 PCS.
- THERMOMETERS (°C -30°+50°)
- DIMENSIONS: Ø23CM (9.2")



#6391

METEO-3

- INDOOR METEO STATION
- THERMOMETER
- BAROMETER
- HYGROMETER
- DIMENSIONS B12xH21cm (4.8x8.4")



◆ #6208 THERMOMETERS ARE

MADE IN ITALY, #6391 IN GERMANY

◆ #6208 THERMOMETERS ARE

EXTREMELY PRECISE

◆ #6208 NEED NO BATTERY AND

ARE VERY EASY TO REGULATE

◆ CLOCKS

A great piece of furniture for both home and office, these “Made in Italy” clocks have a unique round or oval shape that is laser-carved for an edgy and outstanding appearance.

Furthermore, they display the current time in some of the most important cities worldwide: New York and Hong Kong.

For minimum orders of 50 pcs, it is also possible to fully customize these models with any colour, design or logo, thus making them an innovative idea for gifts and promotions.

- #6232**
MOVALE Ø55 WHITE
 · Ø55CM. (21.6")
 · ALUMINUM CONSTRUCTION
 · MINERAL GLASS
 · QUARTZ CLOCK
 · 3 CURRENT TIMES
 · FUNCTIONS WITH 3X AA BATTERIES



ALUMINUM FRAME ◆

MINERAL GLASS ◆

QUARTZ CLOCK ◆

MADE IN ITALY ◆

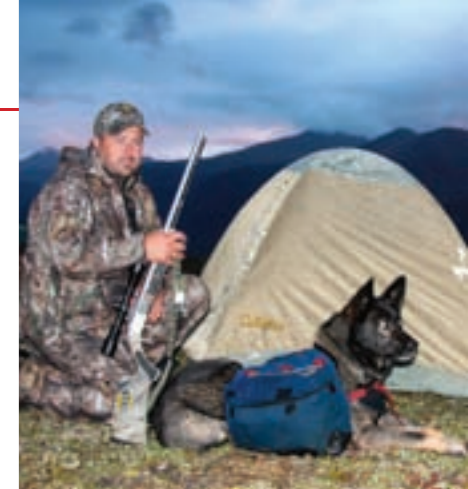
- #6230**
MOVALE Ø55 BLACK
 · Ø55 CM. (21.6")
 · ALUMINUM CONSTRUCTION
 · MINERAL GLASS
 · QUARTZ CLOCK
 · 3 CURRENT TIMES
 · FUNCTIONS WITH 3X AA BATTERIES



OUTDOOR INSTRUMENTS ◆

As a true outdoor computer, the # 4506 will provide every sportsman with countless useful functions for the most rewarding performance on the field: altimeter, barometer, thermometer, digital compass, weather forecast, alarm.

The # 4570 is a small and portable device that can work as both a torch and a keychain while also providing the mosquito repellent function, something that makes it an invaluable companion for every outdoor activity.



#4506
NORTH-6



#4570
MOSQUITO
KIT 12 PCS



- ◆ DIGITAL ALTIMETER
- ◆ DIGITAL COMPASS
- ◆ BAROMETER
- ◆ WEATHER FORECAST
- ◆ THERMOMETER °C/F
- ◆ 12/24 H WATCH
- ◆ M/F SELECTABLE HEIGHT
- ◆ MEMORIZE THE DATA OF THE BAROMETRIC PRESSURE
- ◆ LIGHT

What's
 your *game!*

- ◆ ANTI MOSQUITOES
 ELECTRONIC EMISSION
- ◆ TWO MODES: LOW-HIGH INTENSITY
- ◆ LIGHT
- ◆ WITH CORD
- ◆ WORKS WITH A 3V CR2032
 BATTERY (INCLUDED)

The # 4074 and # 4075 Konustar professional compasses were invented, designed and developed by Konus and are therefore a worldwide exclusivity that only our company can offer you. They have a full metal body and indispensable features like a clinometer, a level bubble, a tripod attachment and a 360° eyepiece. These products are well suited for geology and topography and are the result of continual efforts to satisfy the requirements of even the most demanding professionals.

The Pilota-K compass allows an easy orientation on the geographical map, thanks to its four scales and to its innovative arrow-shape.

Invented, created and developed by Konus, these professional models are a worldwide exclusivity that only our company can offer you.

The Konustrek compasses are fully made in metal and come with an original shape and with a double scale: they are available in 3 different colors, either in gift box or blister packing.

Finally, the Konuspoint are the perfect march compasses because of their stylish and ergonomic design with an extremely light weight.



COMPASSES #4074 AND #4075

PROFESSIONAL COMPASS ◆

FULL METAL BODY ◆

LIQUID FILLED ◆

WITH CLINOMETER ◆

LEVEL BUBBLE ◆

2 SCALES ◆

TRIPOD ATTACHMENT ◆

360° EYEPIECE ◆

COMPLETE WITH INSTRUCTIONS

FOR USE IN 8 LANGUAGES.

PATENTED BY KONUS

COMPASS #4104

MAP COMPASS ◆

LIQUID FILLED ◆

ARROW SHAPED ◆

WITH 4 SCALES ◆

WITH MAGNIFIER ◆

SUPPLIED WITH A COMPLETE

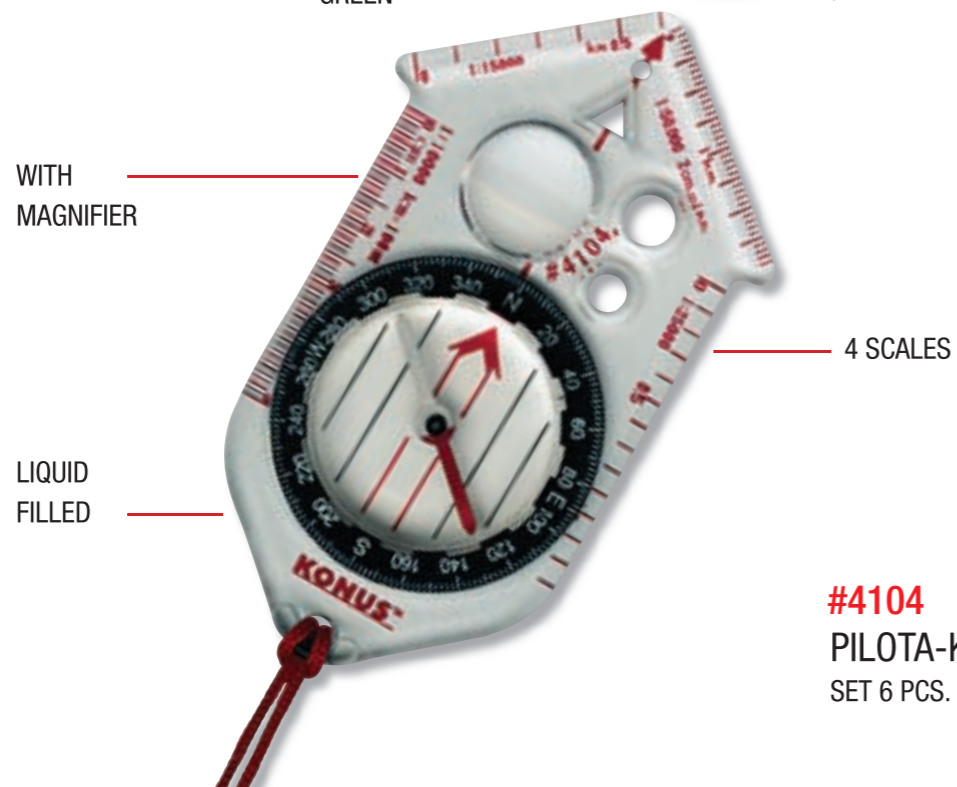
INSTRUCTIONS BOOKLET

IN 8 LANGUAGES.



#4075
KONUSTAR
GREEN

#4074
KONUSTAR
GREY



#4104
PILOTA-K
SET 6 PCS.

#4089
KONUSPOINT-6
SET 6 PCS.



#4087
KONUSPOINT-5
SET 6 PCS.



#4901
KONUSTREK-1
SET 6 PCS.

#4904
KONUSTREK-3
SET 6 PCS.



SET 6 PCS.

PATENTED BY KONUS

◆ MARCH COMPASSES

◆ EXCLUSIVE DESIGN

◆ SUPPLIED WITH THEIR OWN DISPLAY BOX

◆ 8-LANGUAGES INSTRUCTIONS

◆ KONUSFIVE

These 5 compasses are some of the best-selling models of our line. All of them are liquid filled and are worldwide exclusivities of Konus with unique shape and design. They are now offered at a special introductory price in a 12 pcs assorted set (# 4150) which also features a distinctive and attractive display box, thus making for a great selling tool that will undoubtedly maximize the potential of the products when placed in every point of sale.

COMPASSES & HEAD TORCH ◆

Assorted compasses for various uses: the #4033 and #4036 are two colorful models for kids.

This compact torch has been developed with LED lights in order to provide a more intense illumination along with enhanced durability, thus becoming an indispensable tool for every serious hunter and outdoorsman.

The # 3902 features a headband for hands-free operation and two selectable modes of use.



#4089
2 PCS.



#4104
4 PCS.



#4033
EGG
SET 16 PCS



#4036
SCOMPASS
SET 24 PCS.

#4170
KONUSFIVE
SET 12 PCS.



#4901
2 PCS.



#4087
2 PCS.



#4904
2 PCS.



EXTRA BIG WHITE LED
LIGHT

RED LED LIGHT



170° ADJUSTABLE TORCH

#3902
KONUSFLASH-2



PATENTED
BY KONUS

EXCLUSIVE DESIGN ◆

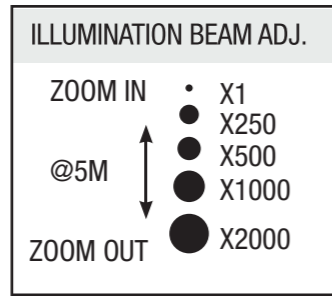
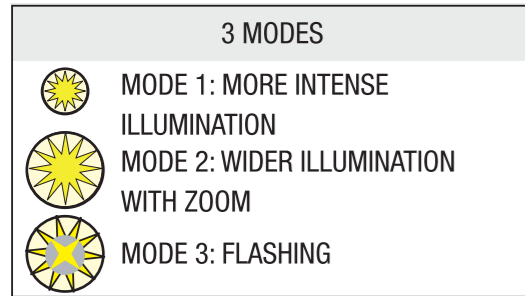
KONUSLIGHT

These new and exciting LED flashlights are truly unique because of their innovative features. The # 3914 has a full metal body with 3 Watt power and flashing function, along with a "zoom" capability that gives you the option to switch from a larger beam of light to a more intense one. The # 3910 is a small device of unparalleled usefulness, since it will fit the cigarette lighter charger of any car and, once fully charged, will provide continuous light with 0.5 Watt power for as long as 4 hours. You can therefore keep it in your car as an emergency light in case of necessity, as well as you can carry it around in your pocket. Fully made of aluminium, this item is available in 3 assorted colors (silver, black and green).

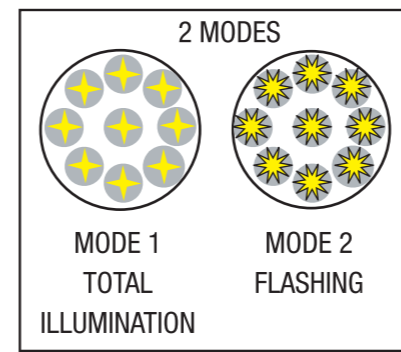


KONUSLIGHT

The model 3913 is competitively priced and very convenient to use with belt pouch and luminescent ring that helps to keep his torch in dark environments. The model 3912 offers maximum convenience in a single article. Surely many of its accessories incorporated in the handle will be used repeatedly on several occasions with the trocar and its red LED and the central belt pouch.



#3914
KONUSLIGHT-5
SET 6 PCS.
CASE INCLUDED



CASE INCLUDED



FLUORESCENT RING

#3913
KONUSLIGHT-4
SET 12 PCS
9 LEDS - 1 WATT



#3910
KONUSLIGHTER
SET 12 PCS. LED RECHARGEABLE TORCH FOR CAR CIGARETTE LIGHTER CHARGER



AVAILABLE IN 3 COLORS:
SILVER, BLACK AND GREEN



#3912
KONUSTOOL
SET 6 PCS
4 LEDS + 1 LED CENTRAL RED
CASE INCLUDED





◆ TECHNIG SUNGLASSES

POLARIZEDMAX™ TECHNOLOGY

- Thanks to a special anti-shock material with the "Polarized Max" technology we obtained a higher level of protection.
- The "Polarized Max" lenses assure brilliant contrast, and high definition.
- Two colors of lenses "Gold Brown" and "Natural Grey" offer protection against all radiation with varying and luminous graduation.
- Original advanced sport finish with insertion of antislid materials.
- Category of protection 3.

◆ POLARFLEX SUNGLASSES

The Polarflex series sunglasses have polarized lenses and are available in two colors (brown and grey) with a modern and advanced style. These types of lenses provide a brilliant contrast and high definition as well as additional protection against reflex from horizontal surfaces such as water, snow and sand. The frames of the polarflex sunglasses are very light and nickel free and were designed to be worn in everyday life and to practice sports with the confidence that your sunglasses will not shake or move. Harmony, style and elegance are the concepts of this new series, created for demanding sportsmen.



IDRO-REPELLENT TREATMENT ON LENSES SURFACE

HIGH TECHNOLOGY PROTECTIVE SUNGLASS

12 DIFFERENT MODELS AND COLOURS

#2965 DISPLAY



POLICARBONATE LENSES

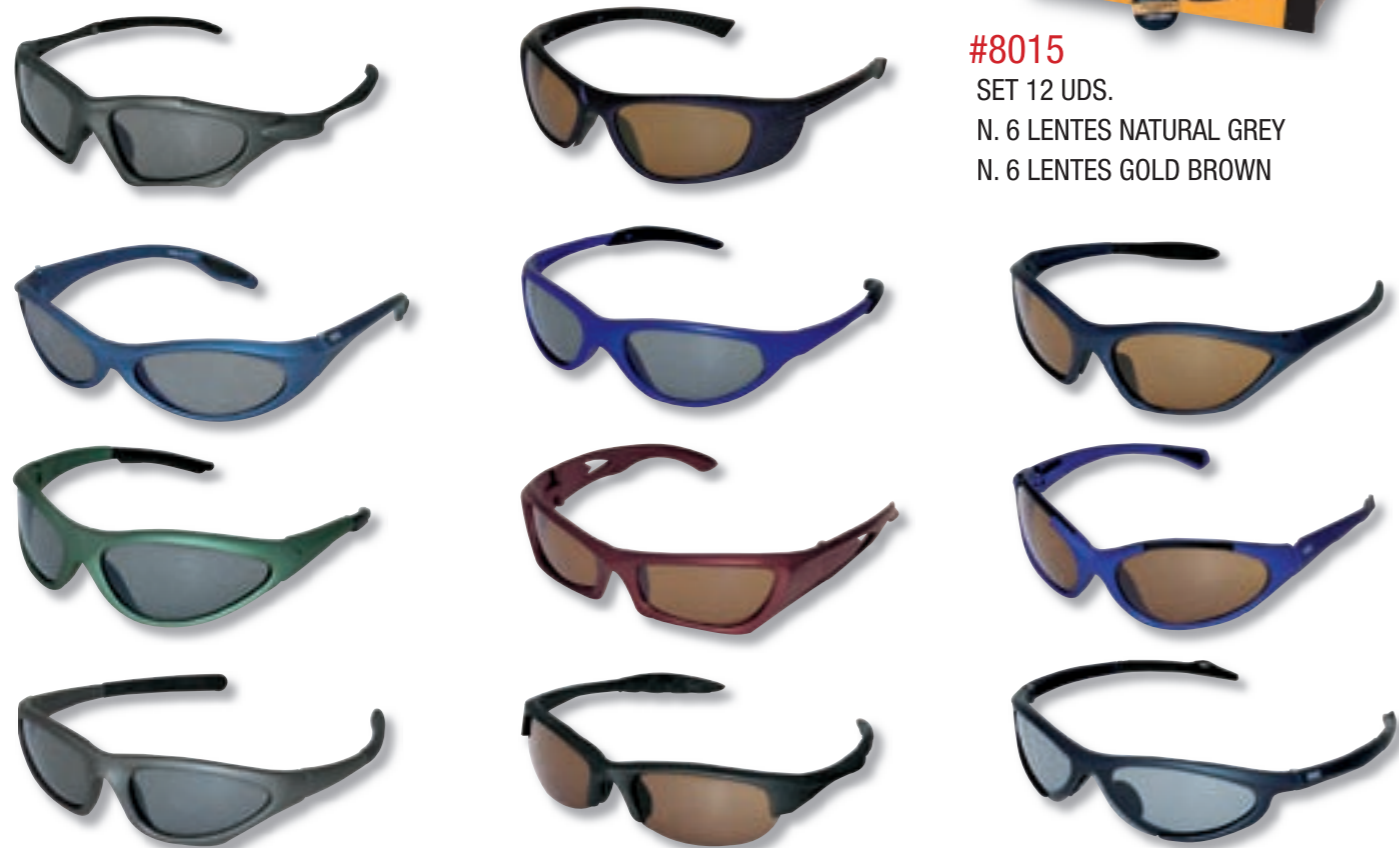
12 CLASSICAL-SPORT MODELS



HIGH QUALITY POLARIZED LENSES

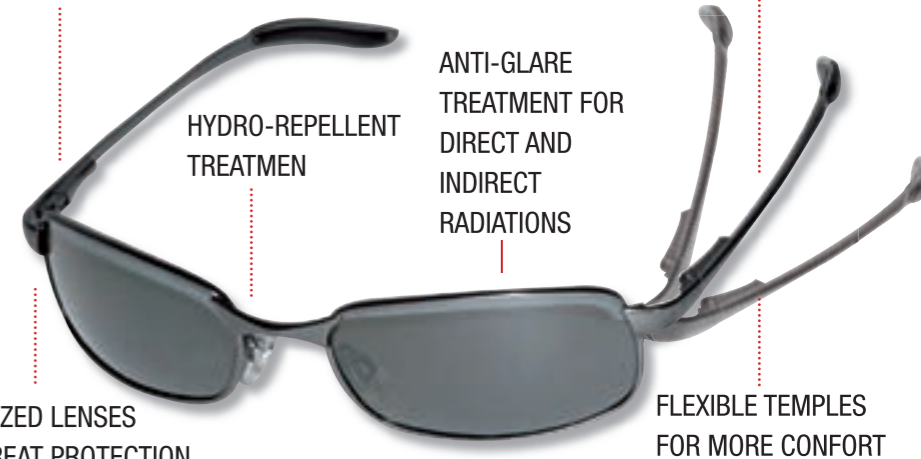
#8015

SET 12 UDS.
N. 6 LENTES NATURAL GREY
N. 6 LENTES GOLD BROWN



"SILVER MATTE" METAL FRAME

#2893 DISPLAY



12 DIFFERENT MODELS AND COLOURS

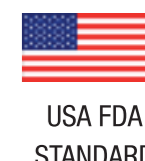
ANTI-GLARE TREATMENT FOR DIRECT AND INDIRECT RADIATIONS

POLARIZED LENSES FOR GREAT PROTECTION

FLEXIBLE TEMPLES FOR MORE CONFORT

#8110

SET 12 PCS.
N. 6 NATURAL GREY LENSES
N. 6 GOLD BROWN LENSES



◆ ADVENTURE SUNGLASSES

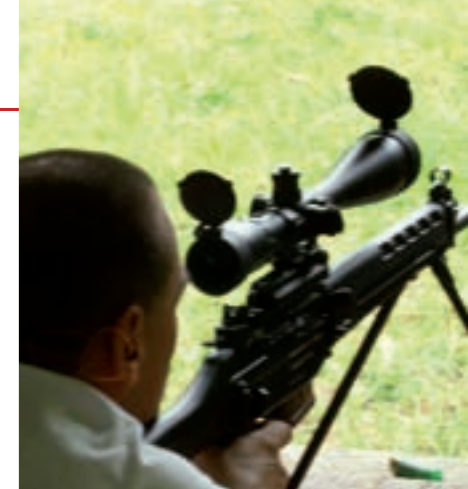
- Exclusive multilayer treatments with vivid colors that perfectly balance reflection, transmission and absorbing of the light. - All lenses have passed the mechanical impact resistance test (drop ball test). - You can mount on each frame also graduated lenses. - UV Protection 100% - Protection category 3 - High comfort and ergonomic design with modern and dynamic style and colors of lenses varying from RAINBOW to SMOKED MIRROR. - Water repellent treatment on lenses in order to reject water and snow and to ease the cleaning. - Anti-reflex treatment against direct and reflex radiations. - Anti scratch treatment in order to protect the multilayer coating.



SHOOTING GLASSES ◆

An adequate protection for your eyes is extremely important while shooting. Our line of shooting glasses is at the same time ergonomic and stylish, while meeting the most rigorous FDA and CE safety standards. The # 8049 model features adjustable temples and three interchangeable lens colors (smoke, yellow and transparent) for maximum versatility in any given light condition.

The brand new # 8051 model is available in two versions (orange and yellow) and includes a removable internal frame for prescription lenses, as well as adjustable temples.



HYDRO-REPELLENT TREATMENT ON LENSES SURFACE

99,9% PROTECTION UV

FLEXIBLE FRAME

#2894 FLOOR EXPOSITOR

INTERNATIONAL CERTIFICATION

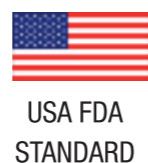
#8030 SET 12 PCS.
N. 6 LENSES RAINBOW
N. 6 LENSES SMOKED MIRROR

HIGH QUALITY LENSES



RAINBOW TECHNOLOGY

12 COATINGS



3 DIFFERENT LENSES COLOUR

#8049 SET 6 PCS.



TRANSPARENT LENS



SMOKE LENS



YELLOW LENS



USA FDA STANDARD



CE STANDARD

EQUIPPED WITH CASE

ADJUSTABLE TEMPLES

CERTIFIED SHOOTING LENS

REMOVABLE FRAME FOR PRESCRIPTION LENSES



PROTECTIVE LENS



ANTI-GRIP NOSEPIECE

ADJUSTABLE TEMPLES

ERGONOMIC



ADJUSTABLE



CE-USA CERTIFICATIONS

COMFORT NOSEPIECE

#8051 SET 6 PCS.
3 PCS ORANGE
3 PCS. YELLOW



ELHASTIC BAND SUPPLIED

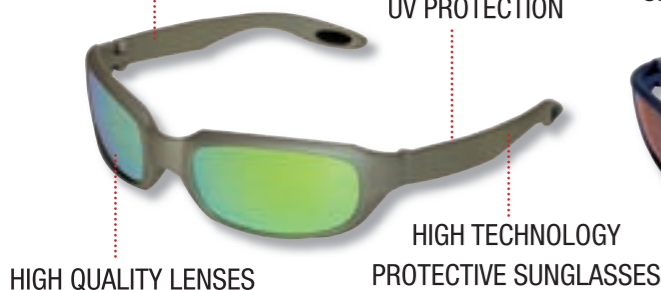
◆ 3-7 KIDS SUNGLASSES

The Trekgen collection has 6 different models with 6 different lens colors, all of them with impeccable optical quality and robust construction to suit the kids in their everyday activities.

The Trekvue collection is specifically designed for children from 3 to 7 years old and grants a total protection against the dangerous sun rays. Anti-allergical treatments, polarized lenses in brown or grey colors, rubberized end of the temples are some of the main features of this series.

IDROREPELLENT TREATMENT ON LENSES SURFACE

99,9% UV PROTECTION



#8070
TREKGEN
SET 6 PCS.



12 DIFFERENT MODELS AND COLOURS

99,9% UV PROTECTION



#8080
TREKVUE
SET 6 PCS.



HIGH QUALITY POLARIZED LENSES



TREKMAN WATCHES ◆

Designed with the true sportsmen in mind, the Trekman watches provide an array of functions for the most rewarding performance on the field: altimeter, barometer, thermometer, tide mode, weather forecast, electronic compass, UV-rays index and so on.

The technology beyond these models is simply astounding, since their microprocessor is more powerful than the processor of the Apple II, which in 1980 gave popularity to personal computers.

- ALTIMETER • BAROMETER
- COMPASS • THERMOMETER
- PACER MODE • 100 MEMORIES
- RESOLUTION 1/100 SECOND
- COUNTDOWN • 2 ALARMS
- HOURLY CHIME • STOPWATCH
- WATCH • AUTO CALENDAR THROUGH YEAR 2099 • BACKLIGHT
- WEATHER FORECAST WITH 5 SYMBOLS



#4417 TREKMAN-XP

- ALTIMETER • BAROMETER • THERMOMETER
- 10 MEMORIES • RESOLUTION 1/100
- AUTO CALENDAR THROUGH YEAR 2049
- STOPWATCH • COUNTDOWN • BACKLIGHT
- WATCH • 2 ALARMS • HOURLY CHIME



#4416 TREKMAN-XT

- UV-RAYS INDEX • ALARM SOUNDS WHEN THE UV RAYS INTENSITY IS TOO HIGH
- GRAPHICAL VISUALIZATION OF THE TIDE MODE • TIME OF HIGH OR LOW TIDE
- WATCH • CHRONOGRAPH
- ALARM • HOURLY CHIME
- BACKLIGHT • COUNTDOWN TIMER
- THERMOMETER



#4419 TREKMAN-UV

- ◆ HIGH TECHNOLOGY INSTRUMENTS
- ◆ ULTRAMODERN DESIGN
- ◆ VERY EASY BATTERY CHANGING
- ◆ IMPECCABLE PRECISION
- ◆ MAXIMUM READIBILITY OF THE DISPLAY

◆ TREKMAN COMPASS

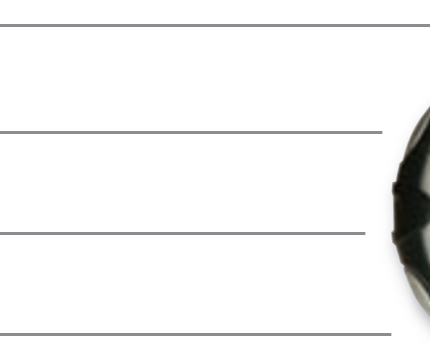
The Trekman watches combine the functions of traditional watches with the most advanced sport functions such as compass, thermometer and stopwatch, all of this with the most dependable precision and the most modern and aggressive design. Our digital watches have been developed with the purpose of giving you complete control on about everything that may remotely affect your outdoor experience.

• DIGITAL COMPASS • STOPWATCH

• COUNTDOWN • RESOLUTION 1/100 OF SECOND
• DOUBLE HOUR

• WATCH • DATE • 12/24 HOURS
FORMAT • 4 DAILY ALARMS

• CHRONOGRAPH • GREEN ILLUMINATED



#4418 TREKMAN-V

• STOPWATCH • THERMOMETER • DIGITAL COMPASS

• 2 DAILY ALARMS • HOURLY CHIME

• WATCH • 12/24 HOURS FORMAT

• ILLUMINATION • WEEK DAY



#4409 TREKMAN-5

• DIGITAL COMPASS

MULTIFUNCTIONS ◆

ELECTRONIC COMPASS ◆

COUNTDOWN ◆

MAXIMUM READIBILITY OF ◆

THE DISPLAY

IMPECCABLE PRECISION ◆

• STOPWATCH • RESOLUTION 1/100 SE-
COND • COUNTDOWN

• WATCH • DATE
• FORMAT 12/24 HOURS

• 3 DAILY ALARMS • HOURLY CHIME



#4408 TREKMAN-8

◆ KIT OUTDOOR WATCHES ◆

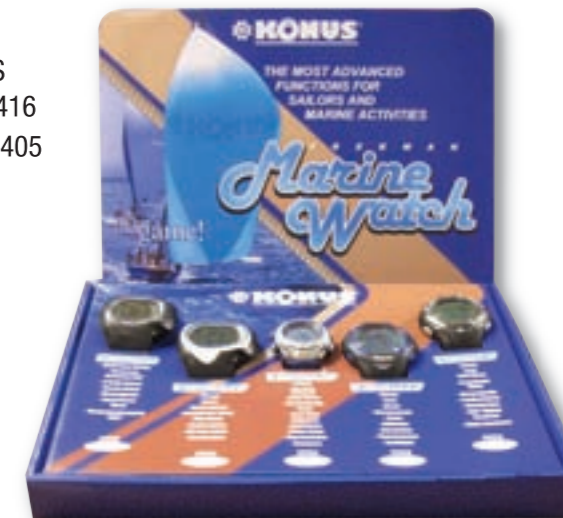
These articles give you the opportunity to start a new and extremely profitable business with enormous potential, since digital watches are appealing for everybody and therefore can be sold well outside the optical field too. Our models have been developed with very competitive prices that will enable you to work with some of the biggest margins in the industry, thus reaping the maximum benefit off of your investments with this new line.

All of the watches feature the most modern and stylish design and come with attractive and distinctive gift boxes and display boxes.

#4997

KIT MARINE - 8 WATCHES

- N.1 COD. 4417 - N.1 COD. 4416
- N. 2 COD. 4409 - N.2 COD. 4405
- N.2 COD. 4408
- N. 1 DISPLAY MARINE



#4416

TREKMAN-XT

- BAROMETER - ALTIMETER -
THERMOMETER- ILLUMINATION
- STOPWATCH



#4417

TREKMAN-XP

- COMPASS- BAROMETER
- ALTIMETER
- THERMOMETER
- ALARM - STOPWATCH
- WEATHER FORECAST

#4409

TREKMAN-5

- COMPASS - THERMOMETER
- ILLUMINATION -STOPWATCH



#4408

TREKMAN-8

- COMPASS
- COUNTDOWN
- ILLUMINATION
- ALARM - STOPWATCH

#4405

SPORT TIME

- WATCH - STOPWATCH - ALARM
- RED COLOUR DATE - COUNTDOWN



#4996

KIT OUTDOOR - 8 WATCHES

- N.1 COD. 4417
- N. 1 COD. 4416
- N. 2 COD. 4405
- N. 2 COD. 4409
- N. 2 COD. 4408
- N.1 DISPLAY

◆ INCREDIBLE PRECISION AND
RELIABILITY

◆ EACH WATCH IS SUPPLIED WITH AN
INDIVIDUAL PLASTIC/CARDBOARD STAND

◆ ATTRACTIVE GIFTBOXES

◆ EACH WATCH HAS DISTINCTIVE DESIGN

◆ SPORT TIME

For a healthy life requires at least 10,000 steps a day. The pedometer then becomes the number one ally of our prosperity. The mod. 4319 also has other useful functions such as counting calories and measuring the distance traveled. Another innovative model is our #4315 featuring a digital pulsemeter function which is finger-operated and will prove to be an invaluable help for your cardio and fitness exercising.

STOPWATCHES ◆

Regardless if you are trying to beat the world record or just your personal best, you better come equipped with a stopwatch. Our line features a wide range of functions, memories and resolutions. In particular the #4260 has a 1/1000 second resolution, a "stroke frequency" mode and 100 lap memories, thus being the most professional model of our range.



#4261
MEMO-X
SET 6 PCS.
- CURRENT TIME
- ALARM
- PACE MODE
- DUAL TIME
- COUNTDOWN
- CHRONOGRAPH
- 10 MEMORIES
- BATTERY INCLUDED



#4260
MEMO-100
- CHRONOGRAPH
- 1/1000 SECOND RESOLUTION
- 100 SEGMENTS OF PARTIAL MEMORIES
- 100 LAP MEMORIES
- STROKE FREQUENCY MODE: 2 TO 60 STROKES
- ILLUMINATION
- BATTERIES INCLUDED

#4315
PULSE - SET 6 PCS
STOPWATCH - DIGITAL PULSEMETER
(SHOWS THE AVERAGE OF THE PULSE)
- IN TWO COLORS - WATCH



#4414
KARDIO
SET 4 PCS.
- WATCH - ALARM - STOPWATCH
- PULSEMETER - COMPARES CALORIES/ PULSE RATE/TIME



#4256
SPIDY-5
SET 12 PCS.
- MULTI-FUNCTIONAL STOPWATCH
- CORD COMPASS
- BATTERY INCLUDED
- TIME AND ALARM FUNCTIONS



#4250
KONUSTART-5
KIT 6 PCS.
- NORMAL TIME
- CHRONOGRAPH
- ALARM
- COUNTDOWN TIMER - DUAL TIME
- DATE - BATTERIES INCLUDED

◆ ELECTRONIC PRECISION
◆ 4 DIFFERENT MODELS
◆ PRECISION 1/1000 FOR MOD. 4260
◆ COMPETITIVE PRICE
◆ ULTRAMODERN DESIGN

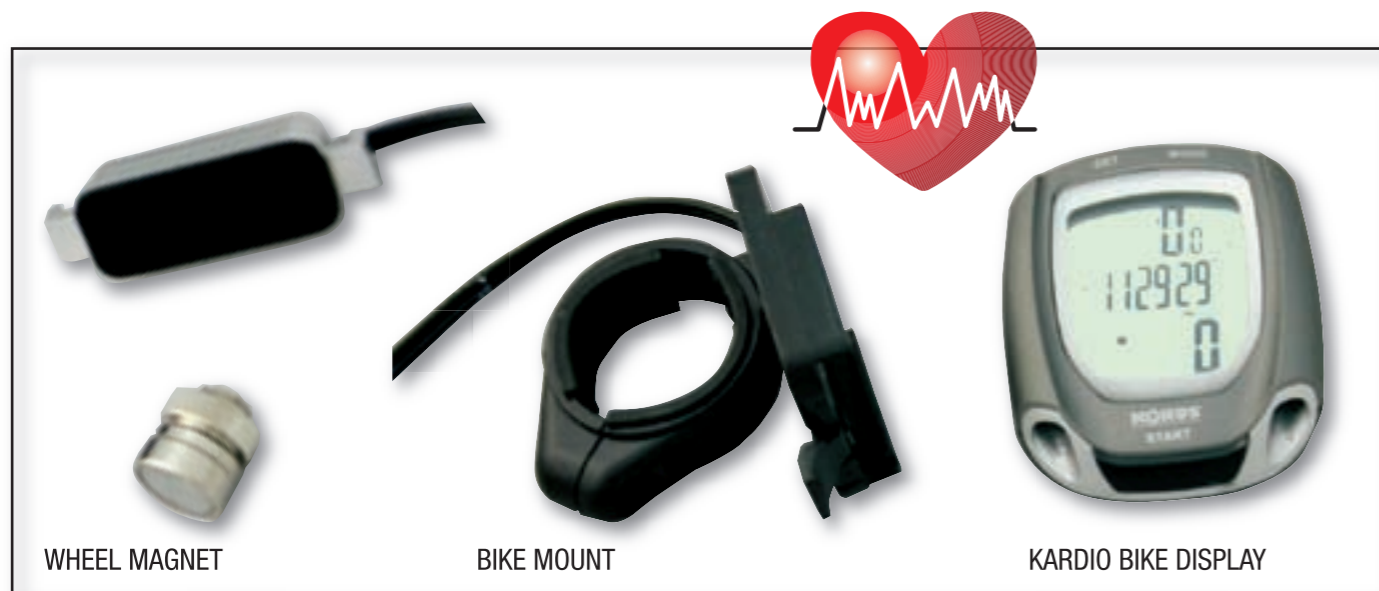
ORIGINALS ◆
EXCLUSIVE ◆
MODERN DESIGN ◆
IMPECCABLE PRECISION ◆
WITH SEVERAL USEFUL FUNCTIONS

#4319
PEDOMETER ZIPPY-9
SET 6 PIECES
- STEP COUNTER - DISTANCE TRAVELED INDICATION- CALORIE BURNT INDICATION - METRIC AND IMPERIAL SYSTEM - AUTO-SHUT-OFF

◆ KARDIO WATCH

The heart is the engine of our body and it is therefore top important to keep its frequency under control while you exercise.

This is why we developed our line of pulse watches. The # 4311 works with a transmitting belt for your chest, while the # 4414 is completely finger operated. The # 4313 is the latest addition to our range and is especially designed for cycling due to its bike attachment and to countless other functions like the measurement of speed, distance, calories and so on.



WHEEL MAGNET

BIKE MOUNT

KARDIO BIKE DISPLAY

#4313 KARDIO BIKE

- 12/24HR - REAL TIME - TRIP METER - ODOMETER - AVERAGE SPEED - MAXIMUM SPEED - SPEED COMPARISON - AUTO RIDE TIME - WHEEL SIZE SETTING - SCAN FUNCTION - HEART RATE - AVERAGE HEART RATE - 3 TARGET ZONE - CALORIES COUNTING - ENERGY SAVE FUNCTION - BIKE MOUNT



SEVERAL MODELS AVAILABLE ◆

COMPACT AND LIGHTWEIGHT ◆

EASY TO USE ◆

ACCURATE MEASUREMENT ◆

#4311 KARDIO-10

- DATE DISPLAY - EXERCISE TIME STOP WATCH - HEART RATE MEASUREMENT USING WIRELESS ECG ACCURATE TRANSMITTER BELT - TARGET ZONE SETTINGS WITH AUDIBLE ALARM - AVERAGE HEART RATE & MAXIMUM HEART RATE - DATA FILE SHOWING EXERCISE DETAILS - ENERGY SAVING MODE (NIGHT TIME)

#4414

KARDIO - SET 4 PIECES - NORMAL TIME - ALARM - CHRONOGRAPH - PULSEMETER - EXERCISE MODE: IT COMPARES THE BURNED CALORIES WITH PULSE RATE AND WITH TIME TO OBTAIN THE INTENSITY OF YOUR TRAINING SESSION - INSTRUCTIONS IN 11 LANGUAGES

SPORT ACCESSORIES ◆

Winter sports often means dealing with the most adverse weather conditions, including the extreme rigors of the harshest winter. In this case, gloves and footwear might not be enough to keep you as comfortable as needed.

This is why Konus is now offering a line of affordable and dependable products that will promptly heat up and generate warmth for your hands, feet and toes.



NO TOXICITY
CERTIFICATION

#7700 HAND WARMERS KIT 40 PCS.

7+ HOURS

57 MEDIUM
69 MAX

134 MEDIUM
156.2 MAX

#7701 TOE WARMERS KIT 40 PCS.

6+ HOURS

38 MEDIUM
42 MAX

100.4 MEDIUM
107.6 MAX

#7702 FOOT WARMERS KIT 30 PCS.

5+ HOURS

35 MEDIUM
39 MAX

95 MEDIUM
102.2 MAX

PRACTICAL AND EASY TO CARRY, THEY ARE IDEAL FOR HUNTING AND OTHER OUTDOOR ACTIVITIES. MADE WITH JAPANESE QUALITY, THEY CAN BE ACTIVATED IN A FEW SECONDS AND POSITIONED INSIDE YOUR GLOVES, POCKETS OR FOOTWEAR.



◆ BATTERIES

As an additional service to our customers, Konus is now offering a wide range of batteries that are at the same time long lasting and environmentally friendly. The models in our range will fit any camera, flashlight, MP3 reader, remote control, electronic equipment and so forth. They are available in the alkaline and lithium types and in the most popular sizes, while their packing is a clamshell according to the standard of the industry.

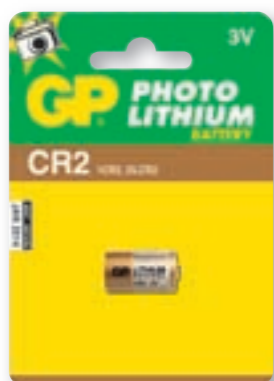
MINIVUE ◆



When you reach the point of not being able to read up close comfortably, especially in a dimly lit environment, you may want to consider single-vision reading glasses. Ranging in power from +1.50 to +3, our # 8400 models come with an attractive metal frame that is foldable and conveniently fits in a pocket-sized case. These reading glasses are therefore a very handy accessory that can be carried everywhere and readied just when you need them. The # 8400 is sold in 24 pcs display boxes with assorted powers, so that customers can easily choose what suits them best.



#3850
CR17345 LITHIUM 3V
SET 10 BLISTERS
OF 1 BATTERY



#3851
CR17355 LITHIUM 3V
SET 10 BLISTERS
OF 1 BATTERY



#3852
LR44 - V13GA - KA76
ALKALINE 1.5V
SET 10 BLISTERS OF 1 BATTERY

#3858
CR2016
LITHIUM 3V
SET 10 BLISTERS
MULTIBLISTER
OF 5 BATTERIES



#3853
LR6 - ALKALINE AA
SET 10 BLISTERS
OF 4 BATTERIES



#3854
LR03 - ALKALINE AAA
SET 10 BLISTERS
OF 4 BATTERIES



#3855
LR14 - ALKALINE C
SET 10 BLISTERS
OF 2 BATTERIES



#3856
L20 - ALKALINE D
SET 10 BLISTERS
OF 2 BATTERIES



#3857
6LF22 - ALKALINE 9V
TRANSISTOR
SET 10 BLISTERS OF 1 BATTERY

#3859
CR2025
LITHIUM 3V
SET 10 BLISTERS
MULTIBLISTER
OF 5 BATTERIES



#3860
CR2032 LITHIUM 3V
SET 10 BLISTERS
MULTIBLISTER
OF 5 BATTERIES



#8401
MINIVUE
KIT 24 READING GLASSES

- 4 PIECES +1,5
- 8 PIECES + 2
- 8 PIECES + 2,5
- 4 PIECES + 3



◆ DIGIVUE

Digivue binocular #2092 is extremely versatile and useful for travel and vacation. It is built with an SD-card slot so that you can save your images being sure they will not be erased. It is also possible to take a short digital video with 1.3MP resolution.

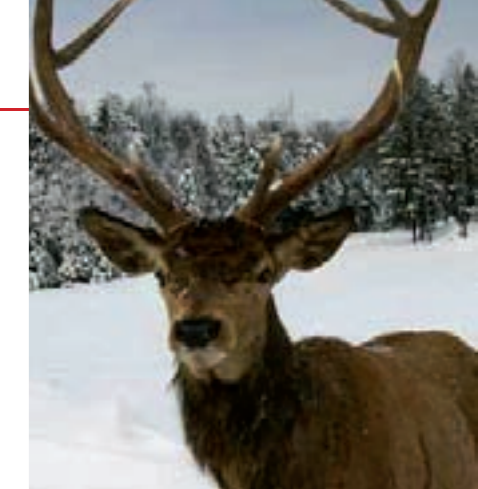
Perfect in every situation, it also has a screw attachment which fits any standard tripod. It is supplied with USB cable for PC-connection, CD-ROM with image editing software, case and 11 languages instructions.

Digital monocular #2047 is for those who want convenience in a light weight design. Its resolution is 1.3MP.

◆ MERCHANDISING MATERIAL

Knowing that the presentation of an article is pivotal to maximize its potential and its selling chances, Konus has developed some unique and eye-catching displays, banners and counters for our main lines of products.

Some of these merchandising materials are also intended as an informative tool, bearing a lot of technical data that are therefore made readily available for customers. All of these materials are offered for free as a part of special promotions, provided that some minimum purchase requirements are met: check your local Customer Service for more information.



#2092
8x22 - 1.3 MP



#2047
8x21 - 1.3 MP

TECHNICAL FEATURES #2047

Sensor type	CMOS sensor 1/4"
Memory	8 mb
Images	12 images Hi res. (640x480) 23 images Low res. (352x288)
Batteries	2 AAA alkaline (not included)
Minimum system requirement	<ul style="list-style-type: none"> • Windows 98 SE / 2000 • Windows Me / XP • TWAIN for PC • Desktop or notebook with pentium 200 Mhz - 64 Mb ram or higher - color monitor with res min 640x480 recommended 1024x768 - CD-ROM - usb and 100 mb of free hard disk drive space

#2092 FEATURES

BINOCULAR WITH
DIGITAL CAMERA ◆

SD-CARD ◆

SLOT

SUPPLIED WITH CD- ROM AND
USB CABLE ◆

#2092	BINOCULAR SPECIFICATION	DIGITAL CAMERA SPECIFICATION
	Magnifications: 8x Objective Diameters: 22 mm Field of view: 7° Exit pupil: 2.5 mm Minimum focusing distance: 4.9 m./14.7ft.	1.3m Color CMOS Sensor - MEMORY: internal: 8MB SDRAM internal External: according to the memory card capacity - IMAGES: +/- 800 (640x480 pixels); +/-200 (1280x1024) video 600 seconds (320x240 pixels) - APERTURE: f/4.5 fixed lens - BATTERIES: 2 alkaline batteries AAA 1,5V (not included) - MINIMUM DISTANCE FOR FOCUSING: from 15m to infinity -SYSTEM REQUIREMENTS: Windows 98/SE/2000/ME/XP - Processor 366 MHz or faster - 64MB SDRAM - 2M RAM video card - Hig 16 bit color display - CD-rom Drive - USB port - 600MB Of free space on Hard drive. Optional: Windows Media Player.



POSTER
BINOCULARS
mm. 475x675



#2973
DISPLAY
BINOCULARS

#2965
DISPLAY
OUTDOOR
SUNGLASSES



#2893
TABLE
DISPLAY
SUNGLASSES



#2894
GROUND
DISPLAY
SUNGLASSES

#2981
WOODEN
WATCH
DISPLAY



◆ AVAILABLE IN ENGLISH, ITALIAN,
SPANISH.

◆ OFFERED AS PART OF PROMOTIONS

◆ SOME DISPLAYS ARE SUPPLIED
WITH THE PRODUCT



33rd Year

KONUS®

Optical & Sport Systems



KONUS U.S.A CORP.

7530 NW 79th STREET
MIAMI - FL 33166
Tel. +1-305-884-7618
Fax +1-305-884-7620
E-mail: konus@bellsouth.net



KONUS ESPAÑA S.L.

C/Caucho, 53 - 28850 Torrejon
De Ardoz - MADRID
Tel. +34-91-6778663
Fax +34-91-6778538
E-mail: ventas@konus.e.telefonica.net



KONUS ITALIA GROUP S.p.A.

Via Fleming, 18
37026 Settimo D.P. (VR)
Tel. +39-045-6767670
Fax +39-045-6767671
E-mail: sales@konus.com

KONUS® is registered trade mark of KONUS in U.S.A., Europe and selected countries
The management reserves the right to make technical changes without prior notice

©KONUS 2012, all rights reserved

www.konususa.com
www.konus.com